

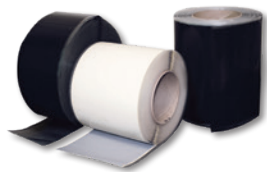
## Sure-Seal® EPDM

### Roofing System Accessories

## Sure-White® EPDM

### Roofing System Accessories

A ready reference guide for ordering EPDM PS Accessories for your next job.



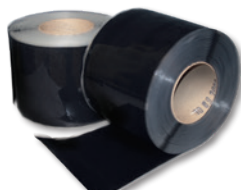
### Pressure-Sensitive Elastoform Flashing®

Uncured 60-mil EPDM laminated to synthetic rubber adhesive. Pressure-Sensitive Elastoform Flashing can be used to flash corners, pipes and other penetrations.

#### Sizes Available:

6" x 100' – Product Number: 310443 – Black  
 6" x 100' – Product Number: 310434 – White  
 9" x 50' – Product Number: 303162 – Black  
 9" x 50' – Product Number: 309950 – White  
 12" x 50' – Product Number: 305723 – Black  
 12" x 50' – Product Number: 309951 – White

**Quantity Per Box:** 2 rolls (6"), 1 roll (9" and 12")



### Pressure-Sensitive Overlayment Strip

Semi-cured EPDM laminated to a synthetic rubber adhesive. It is designed for stripping in seams, all types of metal edging and Carlisle Seam Fastening Plates.

#### Sizes Available:

6" x 100' – Product Number: 302319 – Black  
 9" x 100' – Product Number: 302281 – Black

**Quantity Per Box:** 2 rolls (6"), 1 roll (9")



### Pressure-Sensitive Curb Flashing

Cured 60-mil EPDM membrane pre-cut to 20" wide with 6" PS SecurTAPE already applied. This product provides the most efficient way to flash curbs and short walls.

#### Sizes Available:

20" x 50' – Product Number: 308705 – Black  
 20" x 50' – Product Number: 309112 – White  
 (White approved for TPO)

#### 20" Pressure-Sensitive Cured Flashing:

20" x 50' – Product Number: 329385 – Black

**Quantity Per Box:** 1 roll



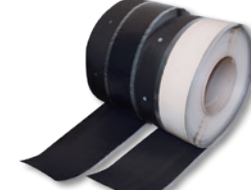
### Pressure-Sensitive Cured Cover Strip

Cured 60-mil EPDM membrane laminated to a synthetic rubber adhesive makes this product the optimal solution to overlay seam fastening plates, stripping in metal edgings or making roof repairs.

#### Sizes Available:

6" x 100' – Product Number: 308701 – Black  
 6" x 100' – Product Number: 308910 – White  
 9" x 100' – Product Number: 308839 – Black  
 9" x 100' – Product Number: 309121 – White  
 12" x 50' – Product Number: 317598 – Black  
 12" x 50' – Product Number: 317596 – White

**Quantity Per Box:** 2 rolls (6"), 1 roll (9" and 12")



### Pressure-Sensitive RUSS

Reinforced Universal Securement Strip RUSS combines reinforced EPDM with 3"-wide Pressure-Sensitive SecurTAPE for additional membrane securement. A 9" version with 3"-wide Pressure-Sensitive SecurTAPE on both sides permits securement of perimeter sheeting on mechanically fastened systems.

#### Sizes Available:

6" RUSS – Product Number: 300490 – Black  
 6" RUSS – Product Number: 309268 – White  
*Use with all EPDM Systems*  
 9" RUSS – Product Number: 300489  
*Use with Mechanically Fastened EPDM Systems*

**Quantity Per Box:** 2 rolls (6"), 1 roll (9")



### Pressure-Sensitive T-Joint Covers

Uncured EPDM laminated to a synthetic rubber adhesive. Required to overlay T-Joint intersections of splices in the field as well as at angle changes for wall flashings. An additional 12" x 12" T-Joint Cover is required for 30-Year Warranty Systems.

#### Sizes Available:

6" x 6" – Product Number: 303100 – Black  
 6" x 6" – Product Number: 332871 – White  
 12" x 12" – Product Number: 305089 – Black  
 (White approved for TPO)

**Quantity Per Box:** 20



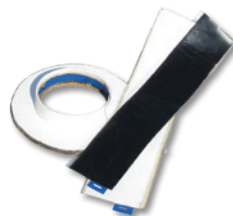
### Pressure-Sensitive Pipe Seals

Cured EPDM with a synthetic rubber adhesive. PS Pipe Seals increase the speed and ease of installation.

#### Sizes Available:

½" – 3" – Product Number: 300204 – Black  
 1" – 6" – Product Number: 309750 – Black  
 1" – 6" – Product Number: 316593 – White  
 (White approved for TPO)

**Quantity Per Box:** 10



### Pressure-Sensitive Pourable Sealer Pockets

Uncured Sure-Seal EPDM Flashing with a synthetic rubber adhesive and a 2" support strip pre-applied to the flashing. Sizes can be combined to form larger pockets when required.

#### Sizes Available:

4" diameter – Product Number: 300208 – Black  
 6" diameter – Product Number: 300209 – Black  
 6" diameter – Product Number: 316243 – White  
 8" diameter – Product Number: 300210 – Black  
 8" diameter – Product Number: 332890 – White  
 (White approved for TPO)

**Quantity Per Box:** 12



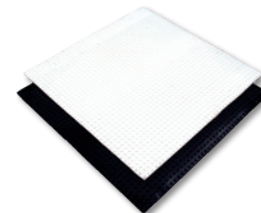
### Pressure-Sensitive Inside/Outside Corners

Uncured EPDM laminated to a synthetic rubber adhesive. The pre-cut corners greatly reduce installation time and can be used for inside and outside corner installations.

#### Sizes Available:

7" x 9" – Product Number: 300199 – Black  
 7" x 9" – Product Number: 310310 – White  
 (White approved for TPO)

**Quantity Per Box:** 20



### Pressure-Sensitive Molded Walkpads

Cured EPDM with a synthetic rubber adhesive. Pressure-Sensitive Walkway Pads are designed to protect the Carlisle EPDM membrane in areas exposed to repetitive foot traffic.

#### Sizes Available:

30" x 30" – Product Number: 300829 – Black  
 30" x 30" – Product Number: 309589 – White  
 (White approved for TPO)

**Quantity Per Pallet:** 50