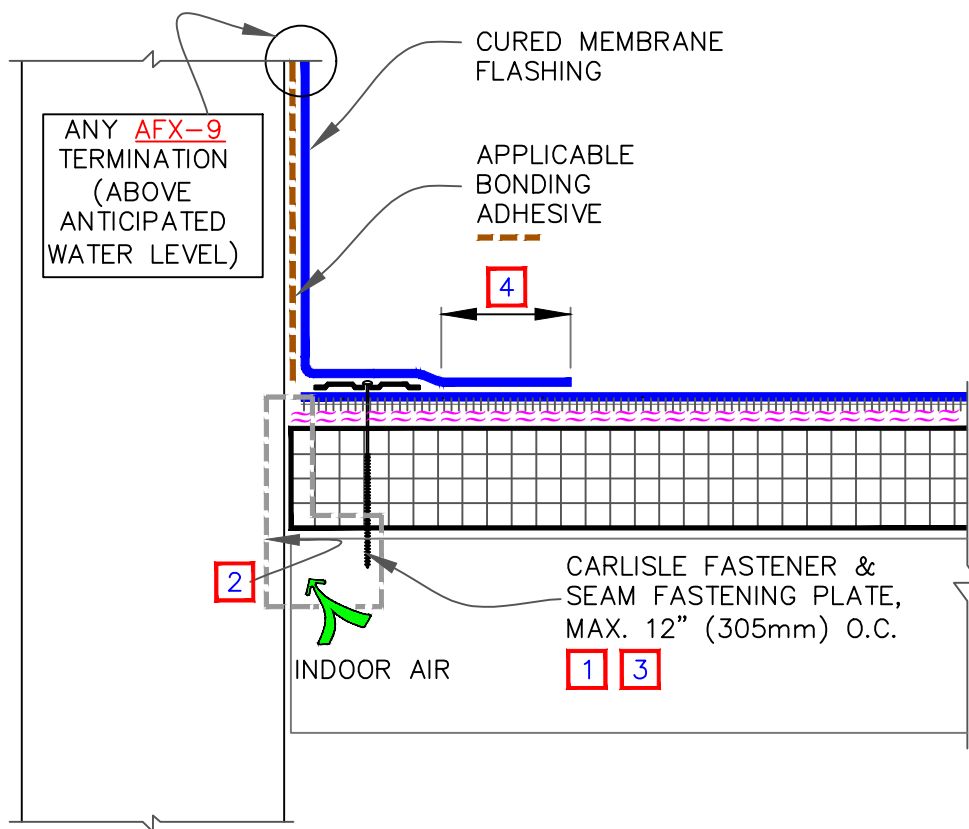


CAUTION

EPDM MEMBRANE SPLICES SHALL INCORPORATE 6" (152mm) WIDE FIELD APPLIED SecurTAPE FOR PROJECTS WITH 20 AND 25-YEAR WARRANTIES.



NOTES:

1. MECHANICAL SECUREMENT IS NOT NECESSARY WHEN AFX MEMBRANE IS ADHERED WITH HOT ASPHALT.
2. REFER TO SPECIAL CONDITION [SPEC. SUPPLEMENTS G-01-18 OR G-08-18](#):
 - 2.1. TO BLOCK INDOOR AIR INFILTRATION AND HUMIDITY AT THE JUNCTION ([G-01-18](#)).
 - 2.2. WHERE ROOF SYSTEM IS DESIGNED WITH A VAPOR RETARDER ([G-08-18](#)).
3. IN A CASE WHERE FASTENERS MUST BE FASTENED INTO THE VERTICAL SUBSTRATE, CARE MUST BE TAKEN TO CREASE THE MEMBRANE TIGHTLY INTO THE ANGLE CHANGE. PLACING THE PLATES TIGHT INTO THE ANGLE CHANGE WILL HELP HOLD THE MEMBRANE IN THE PROPER POSITION.
4. SPLICES SHALL BE COMPLETED USING MINIMUM 3" (76mm) WIDE SecurTAPE/ PRIMER WITH EPDM MEMBRANE AND MINIMUM 1-1/2" (38mm) HOT AIR WELD WITH TPO.
5. WHEN USING 60 OR 80-MIL REINFORCED TPO MEMBRANE FLASHING, APPLY A 4-1/2" DIAMETER TPO "T-JOINT" COVER AT ALL FIELD SPLICE INTERSECTIONS.

ALL EPDM SPLICE INTERSECTIONS MUST BE OVERLAID WITH A PRESSURE-SENSITIVE T-JOINT COVER. PRIOR TO DOING SO, APPLY LAP SEALANT ALONG THE EDGE OF THE MEMBRANE SPLICE (UNDER THE 6"x6" T-JOINT COVER) COVERING THE EXPOSED SPLICE TAPE 2" (51mm) IN EACH DIRECTION FROM THE SPLICE INTERSECTION. PROJECTS WITH 25-YEAR WARRANTIES MUST BE OVERLAID WITH TWO LAYERS OF PRESSURE-SENSITIVE ELASTOFORM FLASHING. THE BOTTOM LAYER SHALL BE 6"x6" (152mm X 152mm) COVERED WITH A 12"x12" TOP LAYER (305mm X 305mm). BOTH LAYERS SHALL BE CENTERED OVER THE SPLICE INTERSECTION AND SEALED WITH CONTINUOUS LAP SEALANT, REFER TO AFX-2 DETAILS.

	<p>PARAPET/CURB WITH SEPARATE MEMBRANE FLASHING</p> <p>For additional information, refer to Specifications</p>	<p>DETAIL NO.</p> <p>AFX-12A</p> <p>AFX ADHERED</p>
--	--	--