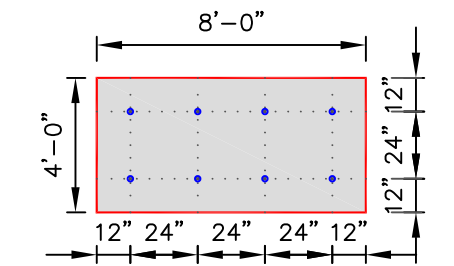


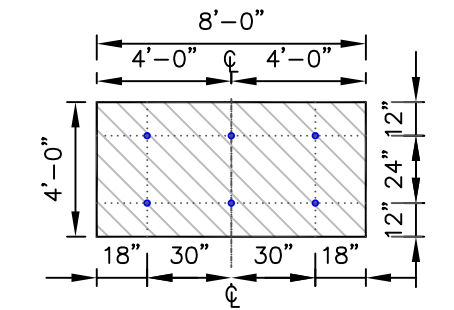
NOTES:

- RhinoBond METHOD OF MEMBRANE ATTACHMENT IS NOT FOR USE WITH NON-FACED EPS (EXPANDED POLYSTYRENE) OR XPS (EXTRUDED POLYSTYRENE) INSULATIONS.
- PERIMETER ENHANCEMENTS REQUIRED FOR WIND SPEED COVERAGE GREATER THAN 72MPS. CONTACT CARLISLE FOR REQUIREMENTS.

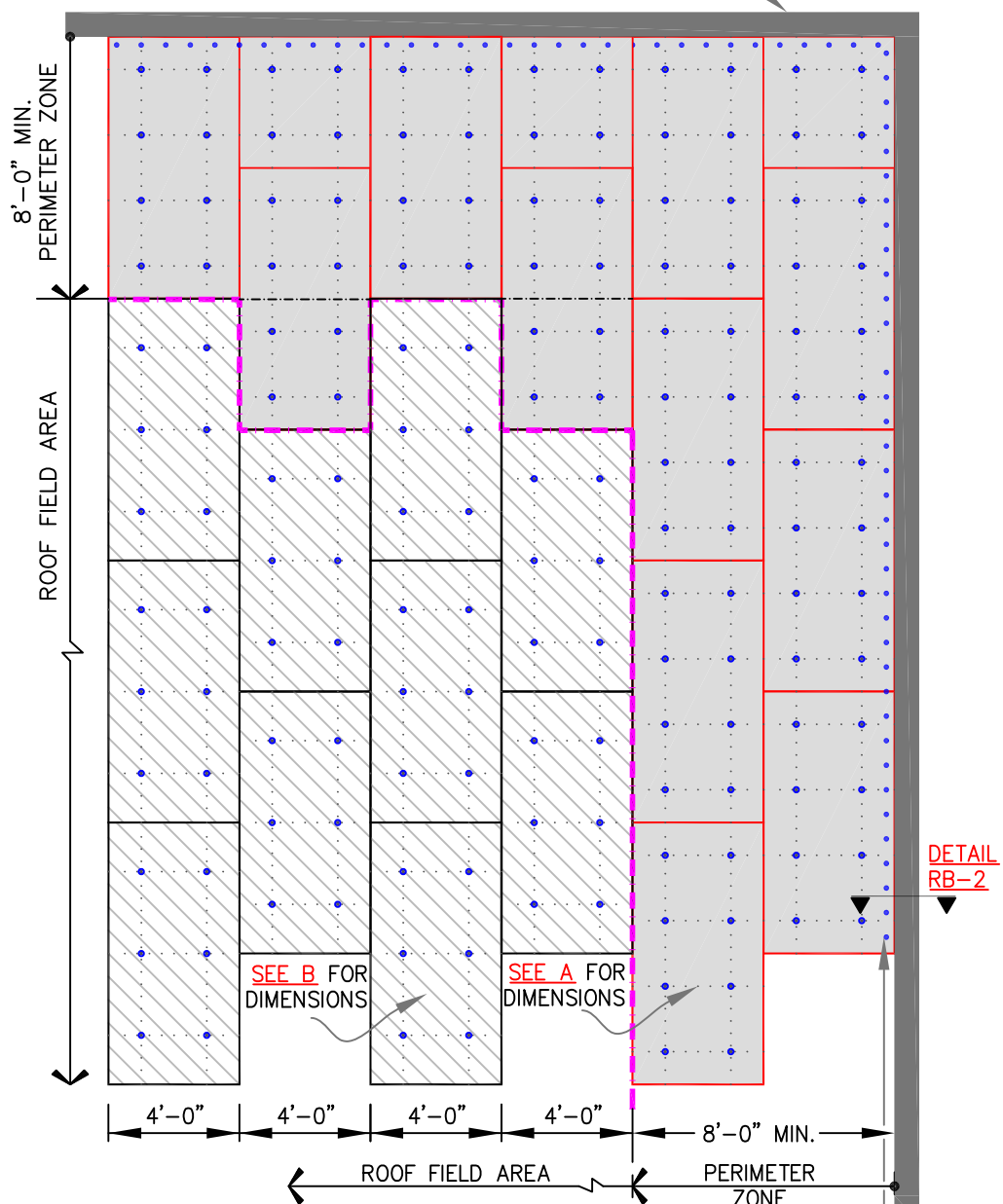
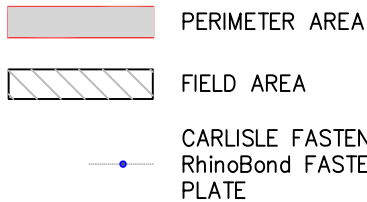
RAISED ROOF EDGE OR PARAPET WALL



(A) PERIMETER ZONE
8 FASTENERS PER 4'X8' BOARD



(B) FIELD OF ROOF
6 FASTENERS PER 4'X8' BOARD



MEMBRANE FASTENED MINIMUM 12" O.C. AT ANGLE(S) CHANGES. FOR ADDITIONAL INFORMATION SEE DETAIL [RB-2](#)

DECK TYPE	DECK THICKNESS	FASTENER	THERMOPLASTIC COATED PLATE
STEEL	22 GAUGE (0.8mm)	CARLISLE HP-X FASTENER	3-1/8" (79.4mm) DIAMETER
PLYWOOD	15/32" (12mm)		

NOTE: AT IN-FILL MINOR PIECES, USE MIN. 2 FASTENERS.

INCHES TO MILLIMETERS							
inch	2"	3.5"	4"	12"	18"	24"	30"
mm	51	89	102	305	457	610	762

FEET TO MILLIMETERS			
FEET	1'	4'	8'
mm	305	1219	2438

→ THERMOPLASTIC MEMBRANE → APPROVED SUBSTRATE → SEE NOTE(S)	RhinoBond ATTACHMENT METHOD – NUMBER OF FASTENERS AND LOCATIONS For additional information, refer to Specifications		DETAIL NO. RB-1
			RhinoBond