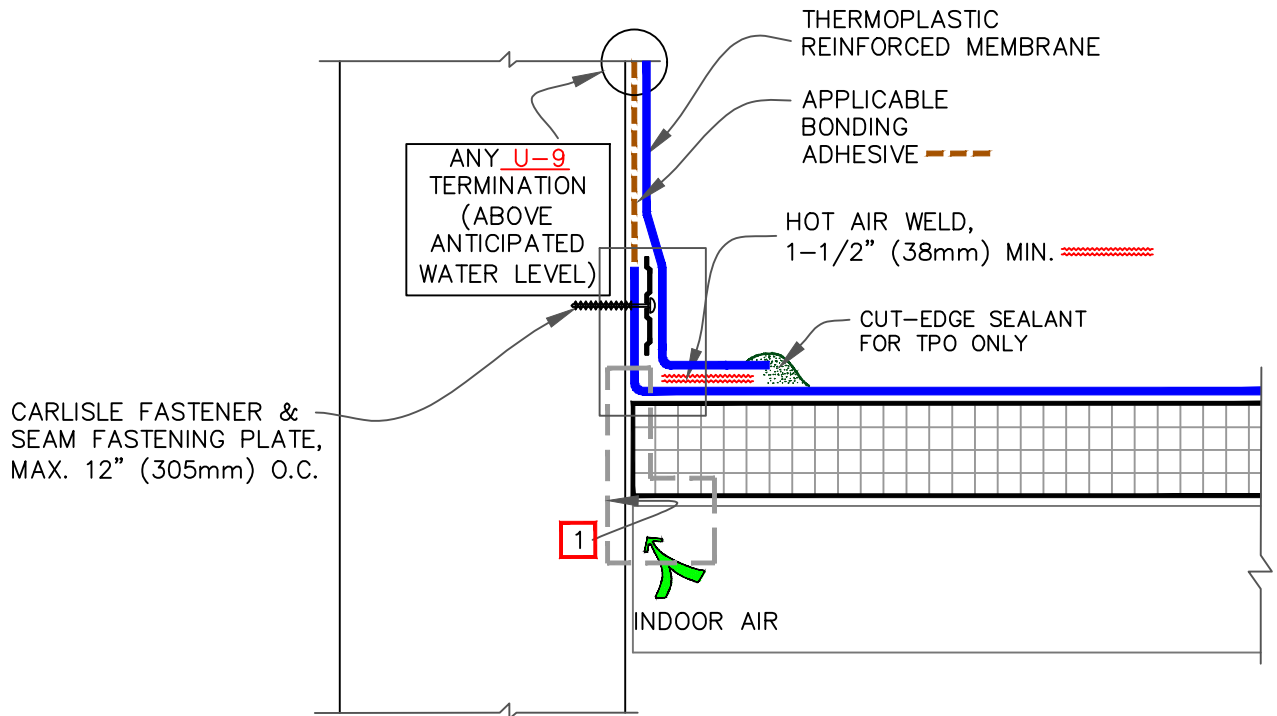


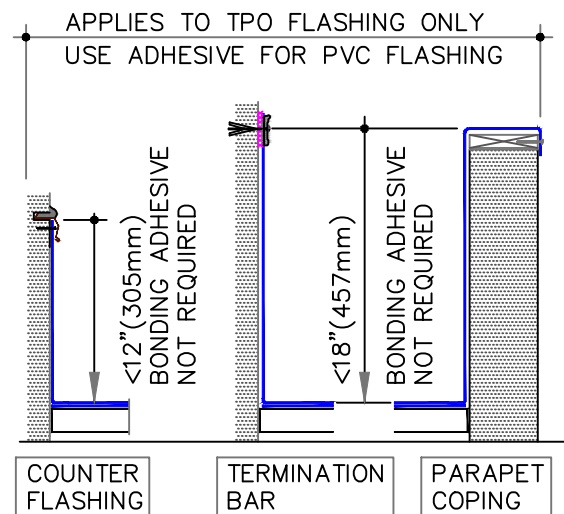
CAUTION

FASTENERS AND PLATES ARE REQUIRED AT 6" O.C. FOR ADHERED SYSTEMS WITH WARRANTY WIND SPEED COVERAGE GREATER THAN 90 MPH AND FOR ALL PROJECTS WITH WARRANTIES GREATER THAN 20 YEARS.



NOTES:

1. REFER TO [SPEC SUPPLEMENTS](#):
 - 1.1. TO BLOCK INDOOR AIR INFILTRATION AND HUMIDITY AT THE JUNCTION ([G-01-18](#)).
 - 1.2. WHERE ROOF SYSTEM IS DESIGNED WITH A VAPOR RETARDER ([G-08-19](#)).
2. CARE MUST BE TAKEN TO CREASE THE MEMBRANE TIGHTLY INTO THE ANGLE CHANGE. PLACING THE PLATES TIGHT INTO THE ANGLE CHANGE WILL HELP HOLD THE MEMBRANE IN THE PROPER POSITION.



<p>● THERMOPLASTIC REINFORCED MEMBRANE</p> <p>● APPROVED INSULATION</p> <p>0 ● SEE NOTE(S)</p>	<p>PARAPET FLASHING – FASTENED INTO WALL</p> <p>For additional information, refer to Specifications</p>		<p>DETAIL NO.</p> <p>U-12A.1</p> <p>THERMOPLASTIC UNIVERSAL</p>
--	--	--	--