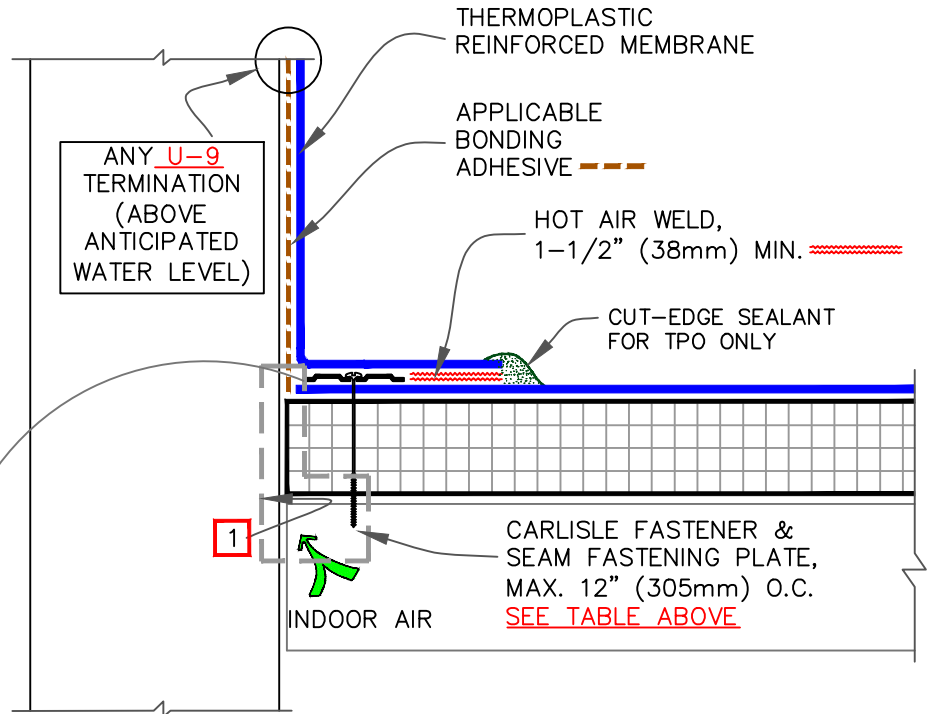
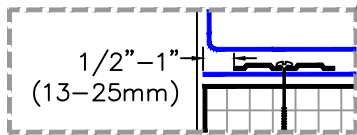


CAUTION

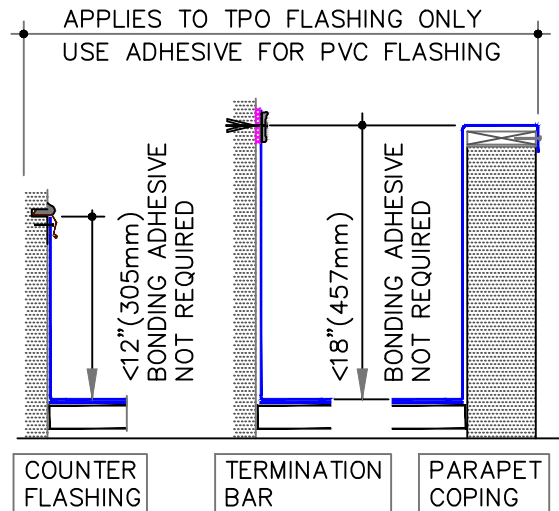
FASTENERS AND PLATES ARE REQUIRED AT 6" O.C. FOR ADHERED SYSTEMS WITH WARRANTY WIND SPEED COVERAGE GREATER THAN 90 MPH AND FOR ALL PROJECTS WITH WARRANTIES GREATER THAN 20 YEARS.

FASTENER TYPES ON MECHANICALLY FASTENED ROOF ASSEMBLY		
DECK TYPE	FASTENERS	PLATES
STEEL & WOOD DECK	HP-X	PIRANHA
	OR	
	HP-XTRA	PIRANHA XTRA
CONCRETE DECK	CD-10 OR HD 14-10	PIRANHA



NOTES:

1. REFER TO [SPEC SUPPLEMENTS](#):
  - 1.1. TO BLOCK INDOOR AIR INFILTRATION AND HUMIDITY AT THE JUNCTION ([G-01-18](#)).
  - 1.2. WHERE ROOF SYSTEM IS DESIGNED WITH A VAPOR RETARDER ([G-08-19](#)).
2. IN CASE WHERE FASTENERS MUST BE FASTENED INTO THE VERTICAL SURFACE, CARE MUST BE TAKEN TO CREATE THE MEMBRANE TIGHTLY INTO THE ANGLE CHANGE. PLACING THE PLATES TIGHT INTO THE ANGLE CHANGE WILL HELP HOLD THE MEMBRANE IN THE PROPER POSITION.



	● THERMOPLASTIC REINFORCED MEMBRANE
	● APPROVED INSULATION
<span style="border: 1px solid red; padding: 2px;">0</span>	● SEE NOTE(S)

PARAPET FLASHING – FASTENED INTO DECK

For additional information, refer to Specifications



DETAIL NO.

U-12A

THERMOPLASTIC UNIVERSAL