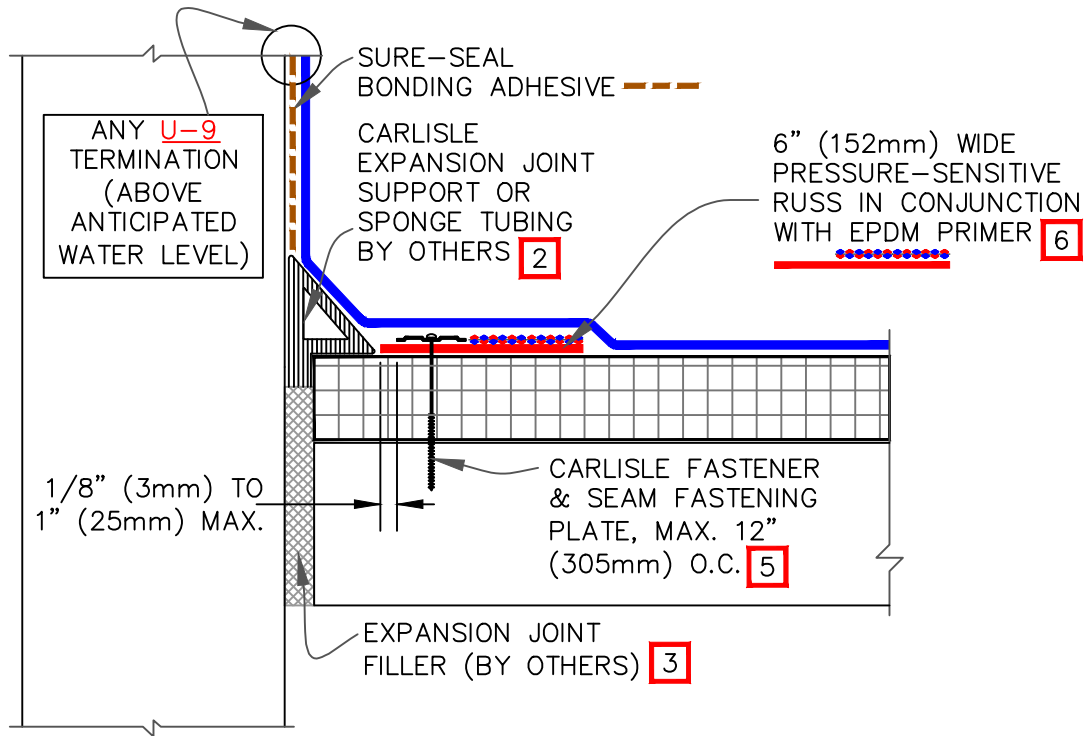






WHEN A WARRANTY WIND SPEED GREATER THAN 90MPH IS SPECIFIED, CARLISLE FASTENERS AND SEAM FASTENING PLATES SHALL NOT EXCEED 6" (152mm) ON CENTER FOR ADHERED MEMBRANE ASSEMBLIES.



NOTES:

1. ALL OUTSIDE AND INSIDE CORNERS REQUIRE TWO COMPLETE CORNER APPLICATIONS OF PRESSURE-SENSITIVE ELASTOFORM FLASHING AS PER DETAILS U-15.
2. ROOF MEMBRANE SHALL NOT BE ADHERED OVER THE EXPANSION JOINT SUPPORT OR SPONGE TUBING.
3. WIDTH OF JOINT SHALL BE A MINIMUM OF 3/4" (19mm) AND SHALL NOT EXCEED 2" (51mm) WHEN CARLISLE EXPANSION JOINT SUPPORT IS USED.
4. ALL VERTICAL FIELD SPLICES AT THE BASE OF A WALL OR CURB MUST BE OVERLAID WITH A PRESSURE-SENSITIVE T-JOINT COVER OR A 6"x6" (152mm X 152mm) SECTION OF PRESSURE-SENSITIVE ELASTOFORM FLASHING CENTERED OVER THE FIELD SPlice. PROJECTS WITH 25 AND 30-YEAR WARRANTIES OR WHEN USING 90-MIL MEMBRANE, ALL VERTICAL SPLICES MUST BE OVERLAID WITH A T-JOINT COVER AND COVERED WITH A 12"x12" (305mm x 305mm) PRESSURE-SENSITIVE ELASTOFORM FLASHING PIECE OR T-JOINT COVER. BOTH LAYERS SHALL BE CENTERED AND SEALED WITH CONTINUOUS LAP SEALANT. REFER TO DETAIL U-2C.
5. ON MECHANICALLY FASTENED SYSTEMS, HP FASTENERS AND POLYMER SEAM PLATES ARE REQUIRED OVER STEEL DECKS.
6. EPDM PRIMER MUST BE APPLIED TO BACK SIDE OF DECK MEMBRANE PRIOR TO COMPLETING SPLICE TO PRESSURE-SENSITIVE RUSS.

 —● EPDM  —● APPROVED SUBSTRATE  —● SEE NOTE(S)	DECK-TO-WALL EXPANSION JOINT			DETAIL NO.
	For additional information, refer to Specifications			U-3B
THERMOSET UNIVERSAL				