

Westile® Western Plaza Pavers™



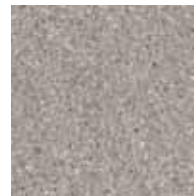
» Slight scuffing may occur during handling.

Color Options

- » Shot blast is the standard finish for Westile Western Pavers.
- » Matte finish is available for special order but will require an extended lead time.

Overview

Westile Western Plaza Pavers are made of a high-density concrete and are well-suited for use in plaza decks, providing a durable, elegant surface while protecting the roof membrane and increasing amenity space. Westile Western Plaza Pavers are to be used in conjunction with high-density polypropylene pedestals that facilitate proper spacing and drainage and provide the ability to create a dead level system. When purchased through Carlisle, Westile Western Plaza Pavers can be used as part of a single-source system and are eligible for material, overburden removal and replacement, and wind speed warranties. Westile Western Plaza Pavers are available exclusively for projects located in the western United States and Canada. For location-specific availability, contact Carlisle.



1101 Natural



1102 Red



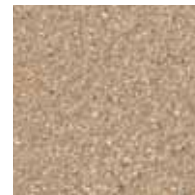
1103 Cinnamon



1104 Charcoal



1105 Ginger



1107 Latte



1109 Yellow*

Features and Benefits

- » Available in various sizes and weights; the most common size is 24" x 24" x 1³/₁₆", weighing 23 pounds per square foot
- » Finished with a chamfered edge profile
- » Available in seven western-specific colors
- » Westile Pavers can contribute to LEED® credit requirements
- » When used to completely cover a single-ply roof system, Factory Mutual (FM) Very Severe Hail (VSH) rating can be achieved

Precautions

- » Pavers can be heavy. Be sure to use at least two people to move them.
- » Do not to stack pavers in an area that might exceed the structural capacity of the building.
- » Take care not to damage membrane or flashings during installation.
- » Pavers are made using natural materials; therefore, a slight color variance may occur.

*Special Order

Notice: Colors subject to change without prior notice. Colors on this sheet may vary from current stock. Actual samples are available from Westile.

Typical Properties and Characteristics

Physical Property	Test Method	Average Value
Compressive Strength	ASTM C140	Minimum 8,000 psi
Water Absorption	ASTM C140	5%
Flexural Strength	ASTM C293	750 psi
Freeze Thaw	ASTM C67	1% loss of dry weight

Typical properties and characteristics are based on samples tested and are not guaranteed for all samples of this product. This data and information is intended as a guide and does not reflect the specification range for any particular property of this product.