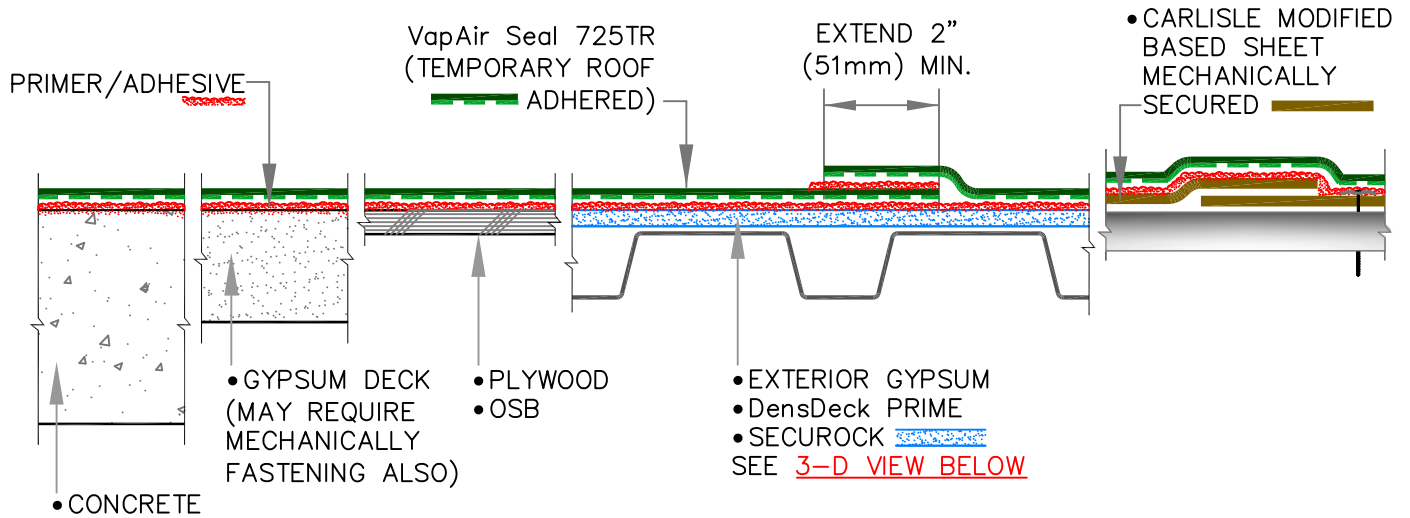
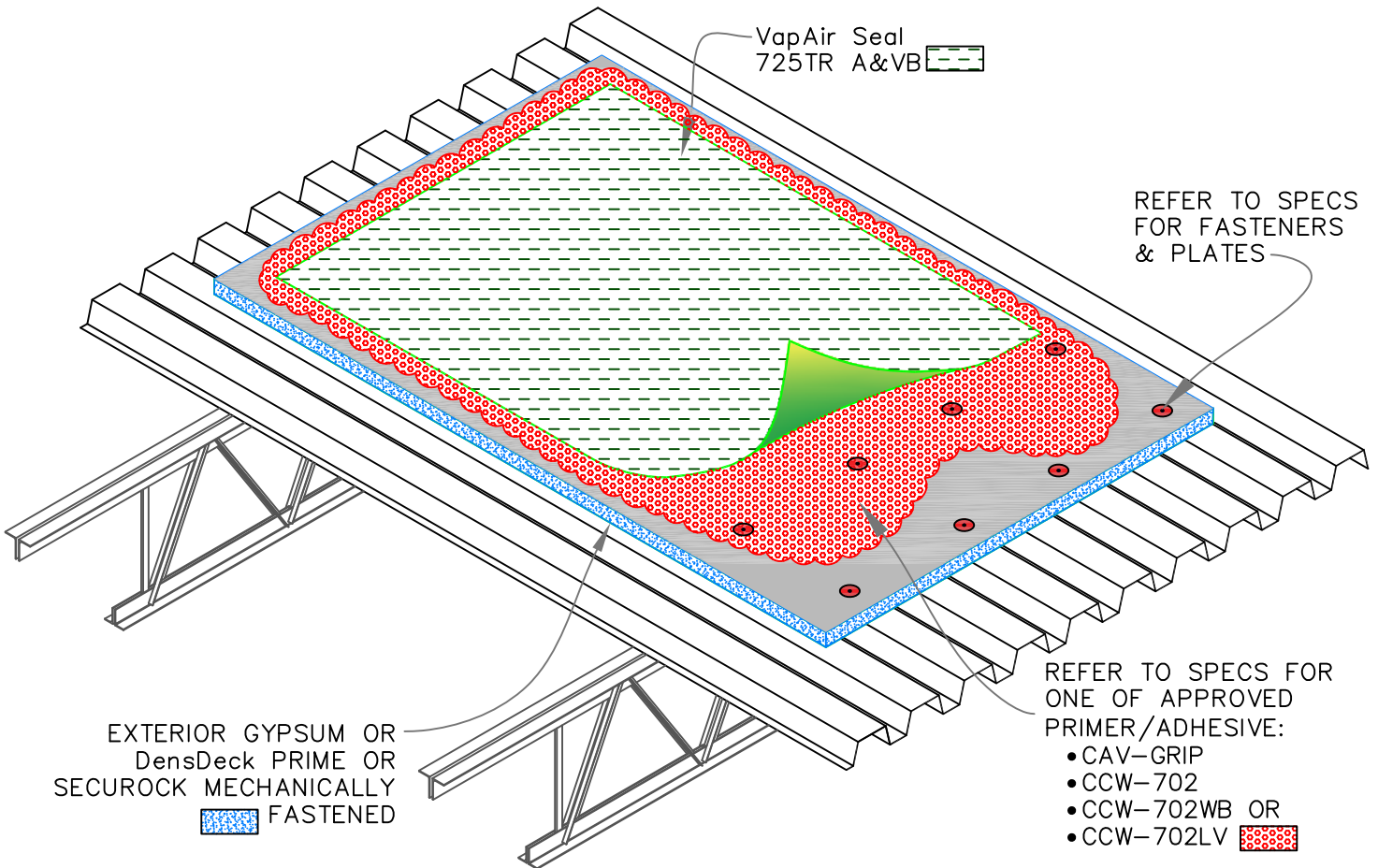


## A APPLICABLE SUBSTRATES & SEAM DETAIL

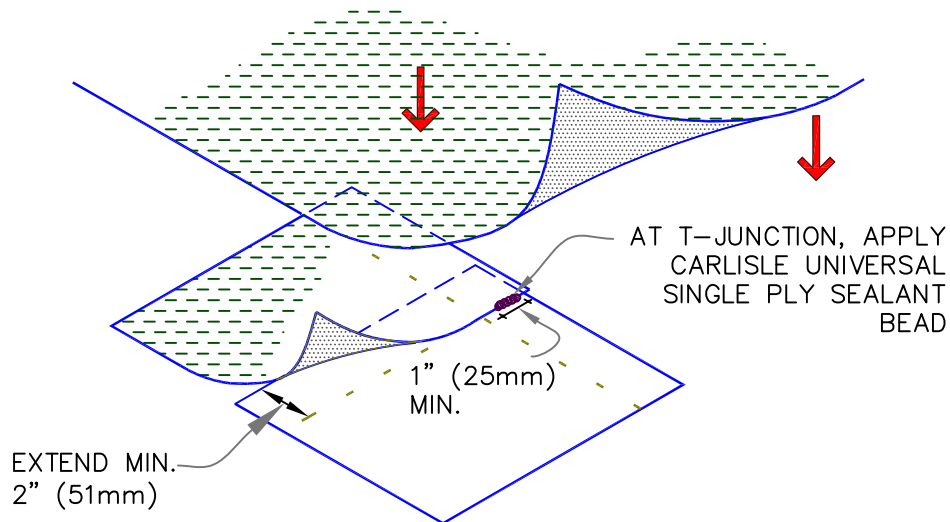


## B 3-D VIEW OF TYPICAL ROOF ASSEMBLY



SEE SHEET **TR-0** FOR ADDITIONAL INFORMATION.

<p>— VapAir Seal 725TR</p> <p>— ROOF MEMBRANE</p> <p>— BONDING ADHESIVE</p>	<p>INSTALLATION (PAGE 1 OF 2)</p> <p>A&amp;VB (AIR &amp; VAPOR BARRIER) AS REQUIRED BY DESIGNER</p>	<p>VapAir Seal 725TR</p> <p>DETAIL NO.</p> <p>TR-0</p> <p>ADHERED A&amp;VB</p>
---	---	--

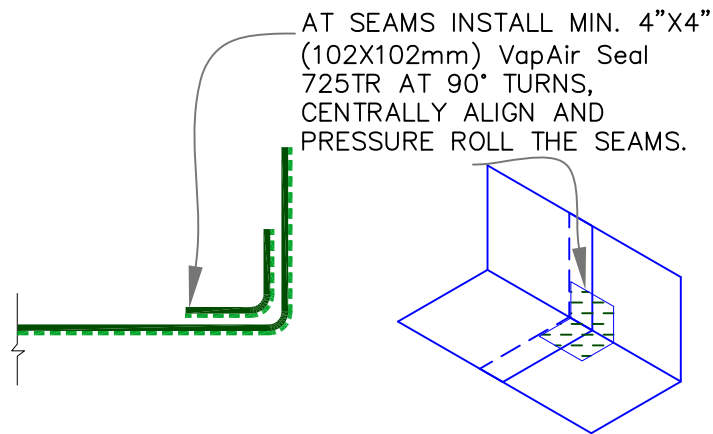


T-JUNCTION OF SEAMS WITH SEALANT

C

NOTES:

1. EXTEND VapAir Seal 725TR TO TOP EDGE OF ROOF INSULATION OR MIN. 2" (51mm).
2. HAND ROLL VERTICAL SURFACES WITH 2" (51mm) WIDE PRESSURE ROLLER.
3. WHEN VapAir Seal 725TR HAS TO BE EXTENDED UP THE WALL (TO SEAL WITH EXTERIOR WALL BARRIERS), IT SHOULD BE COVERED WITH INSULATION BOARD (MIN. R-VALUE 6) TO AVOID CONDENSATION AND ALSO TO AVOID UNEQUAL EXPANSION/CONTRACTION OF MEMBRANES. BOARD WILL PROVIDE A SUBSTRATE FOR ROOF MEMBRANE ALSO.
4. DIRECT ADHESION OF ROOF MEMBRANE TO VapAir Seal 725TR IS NOT RECOMMENDED.



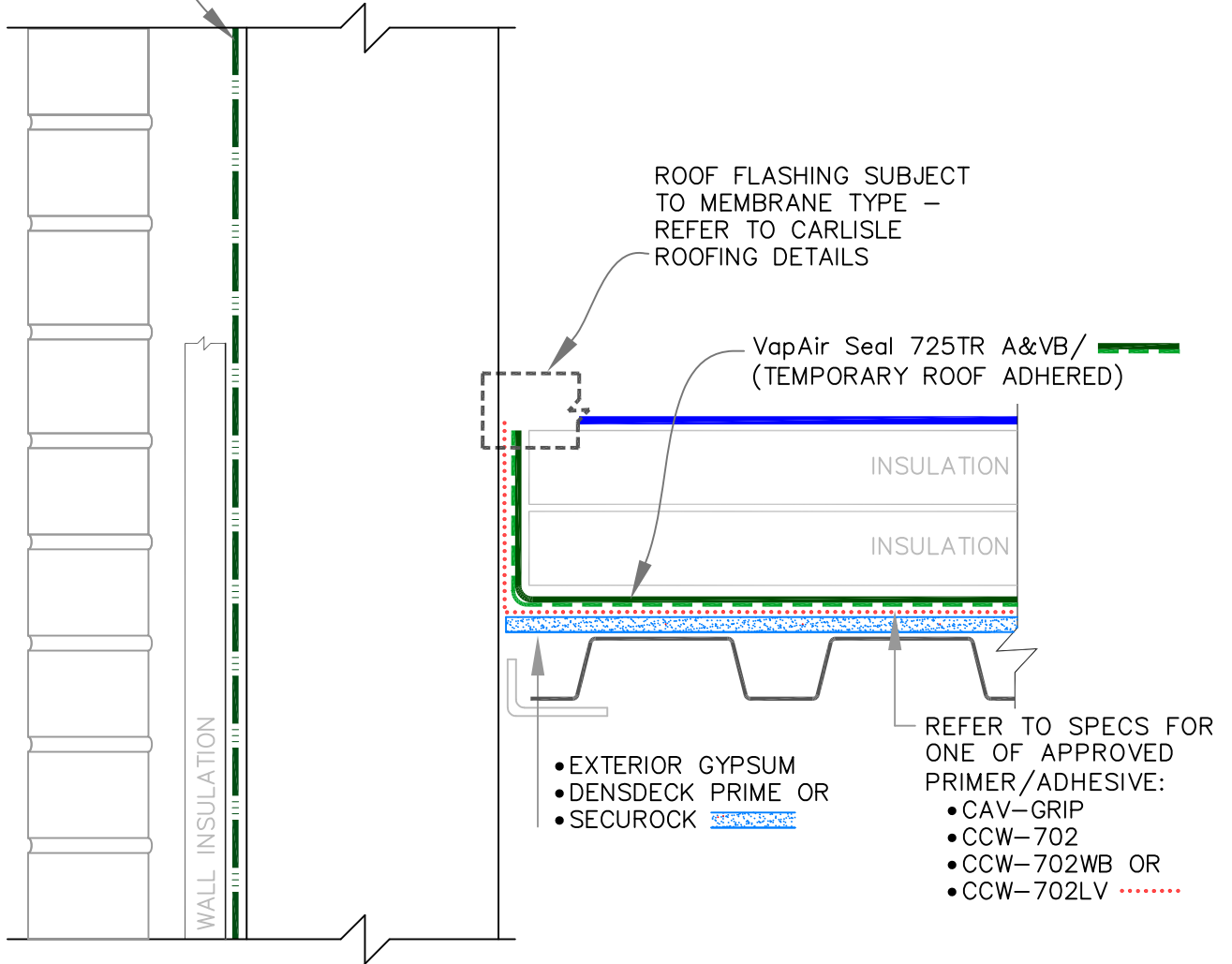
ROOF TO WALL TRANSITION

D

SEE SHEET [TR-0](#) FOR ADDITIONAL INFORMATION.

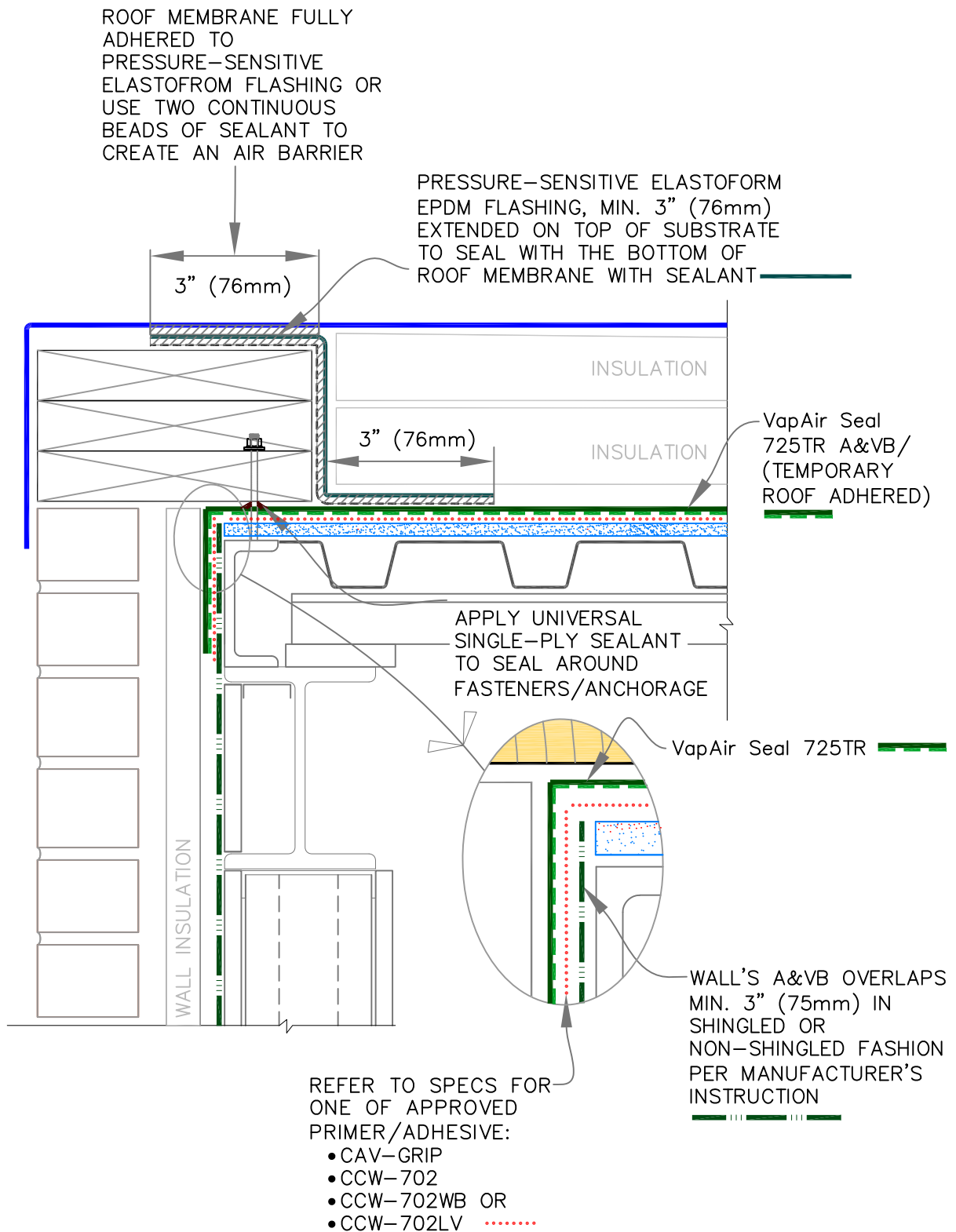
<p> — VapAir Seal 725TR</p> <p> — ROOF MEMBRANE</p> <p> — BONDING ADHESIVE</p>	<p>INSTALLATION (PAGE 2 OF 2)</p> <p>A&amp;VB (AIR &amp; VAPOR BARRIER) AS REQUIRED BY DESIGNER</p>	<p>VapAir Seal 725TR</p> <p>DETAIL NO.</p> <p>TR-0</p> <p>ADHERED A&amp;VB</p>
--	---	--

TYPICAL EXTERIOR  
WALL BARRIER



SEE SHEET **TR-0** FOR  
ADDITIONAL INFORMATION.

<div></div> → VapAir Seal 725TR	<div></div> → ROOF MEMBRANE	<div></div> → BONDING ADHESIVE	PARAPET (NO TIE-IN TO WALL VAPOR BARRIER)	A&VB (AIR & VAPOR BARRIER) AS REQUIRED BY DESIGNER	VapAir Seal 725TR	DETAIL NO. TR-1.1	ADHERED A&VB
---------------------------------	-----------------------------	--------------------------------	--	--	-------------------	----------------------	--------------



SEE SHEET **TR-0** FOR ADDITIONAL INFORMATION.

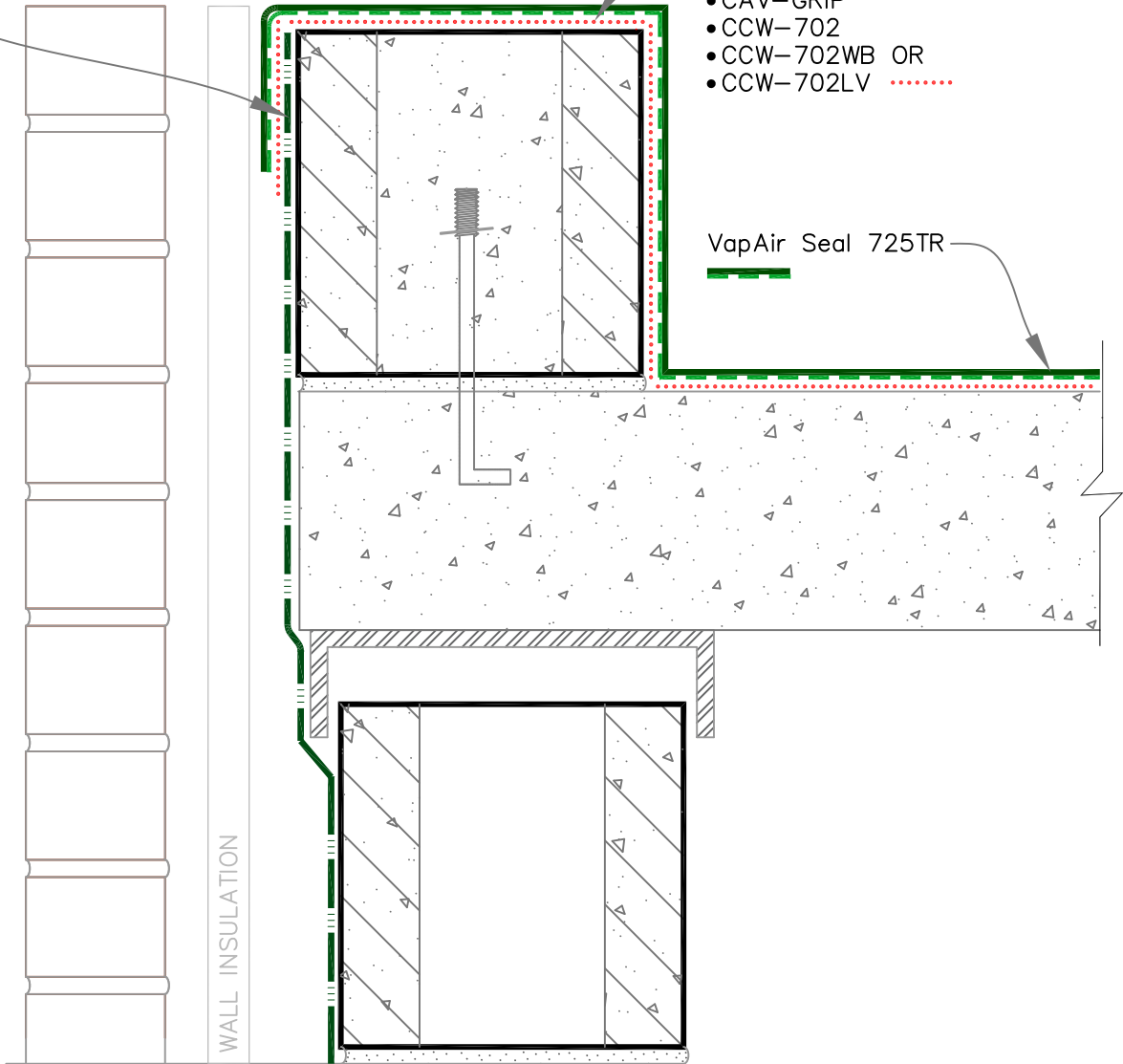
<div></div> — VapAir Seal 725TR <div></div> — ROOF MEMBRANE <div></div> — BONDING ADHESIVE	ROOF EDGE ROOF A&VB TIE-IN TO WALL A&VB A&VB (AIR & VAPOR BARRIER) AS REQUIRED BY DESIGNER	<div> <math display="block">= \frac{\sum R_x}{\sum R} (T_i)</math> </div>	<b>VapAir Seal 725TR</b> DETAIL NO. <b>TR-1.2</b> ADHERED A&VB
--	--	---	---

WALL'S A&VB OVERLAPS MIN.  
3" (75mm) IN SHINGLED OR  
NON-SHINGLED FASHION PER  
MANUFACTURER'S INSTRUCTION

REFER TO SPECS FOR  
ONE OF APPROVED  
PRIMER/ADHESIVE:

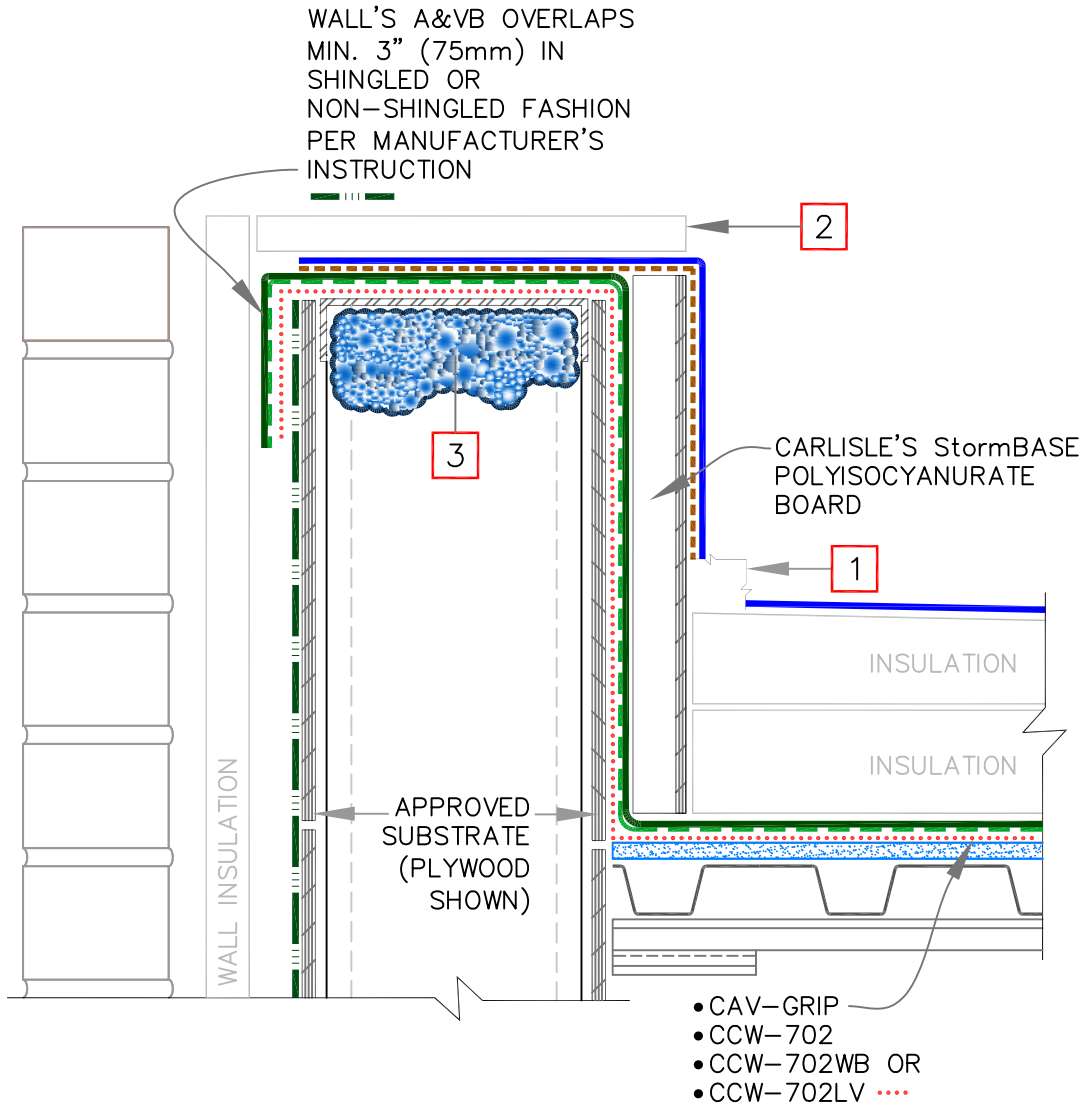
- CAV-GRIP
- CCW-702
- CCW-702WB OR
- CCW-702LV

VapAir Seal 725TR



SEE SHEET **TR-0** FOR  
ADDITIONAL INFORMATION.

<p>— VapAir Seal 725TR</p> <p>— ROOF MEMBRANE</p> <p>— BONDING ADHESIVE</p>	<p>PARAPET ON ROOF DECK</p> <p>ROOF A&amp;VB TIE-IN TO WALL A&amp;VB</p> <p>A&amp;VB (AIR &amp; VAPOR BARRIER) AS REQUIRED BY DESIGNER</p>	<p>VapAir Seal 725TR</p> <p>DETAIL NO.</p> <p>TR-1.3</p> <p>ADHERED A&amp;VB</p>
---	--	--

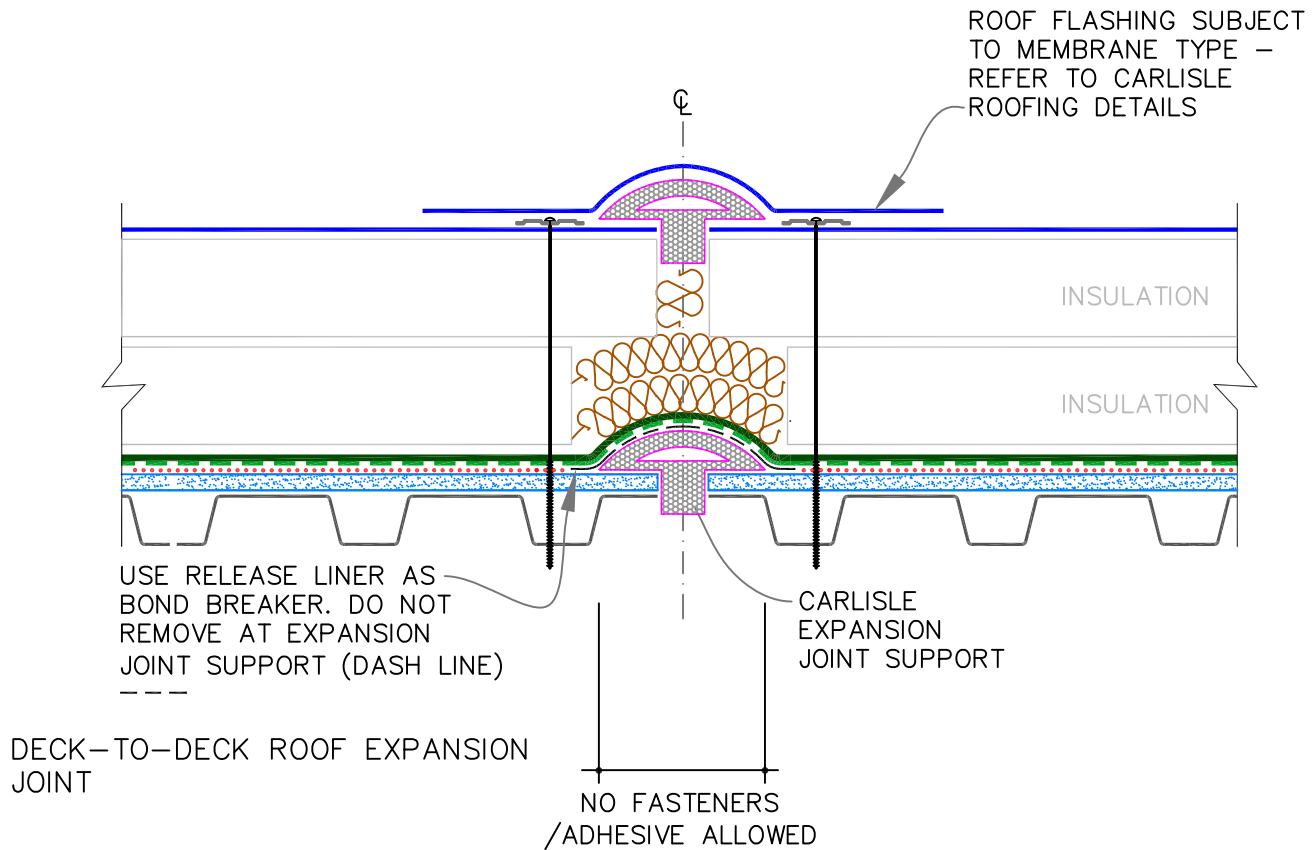


## NOTES:

1. REFER TO CARLISLE STANDARD DETAILS FOR ROOF BASE FLASHING
2. CARLISLE SECURSHIELD HD COMPOSITE BOARD, 100 PSI (6.9 KILOPASCAL) COMPRESSIVE STRENGTH [SUGGESTED IN ASHRAE ZONES 6-8 (ZONES B TO D IN CANADA)] OR WHERE CODE REQUIRES FOR c.i. (CONTINUOUS INSULATION).
3. IN HIGH HUMIDITY SPACES, USE VapAir Seal Flashing Foam PER SPECIFICATIONS, [SUGGESTED IN ASHRAE ZONES 6-8 (ZONES B-D IN CANADA)]
4. WHEN WALL BARRIER IS ABOVE ROOF MEMBRANE, THEN USE MASTIC RECOMMENDED BY WALL BARRIER MANUFACTURER.

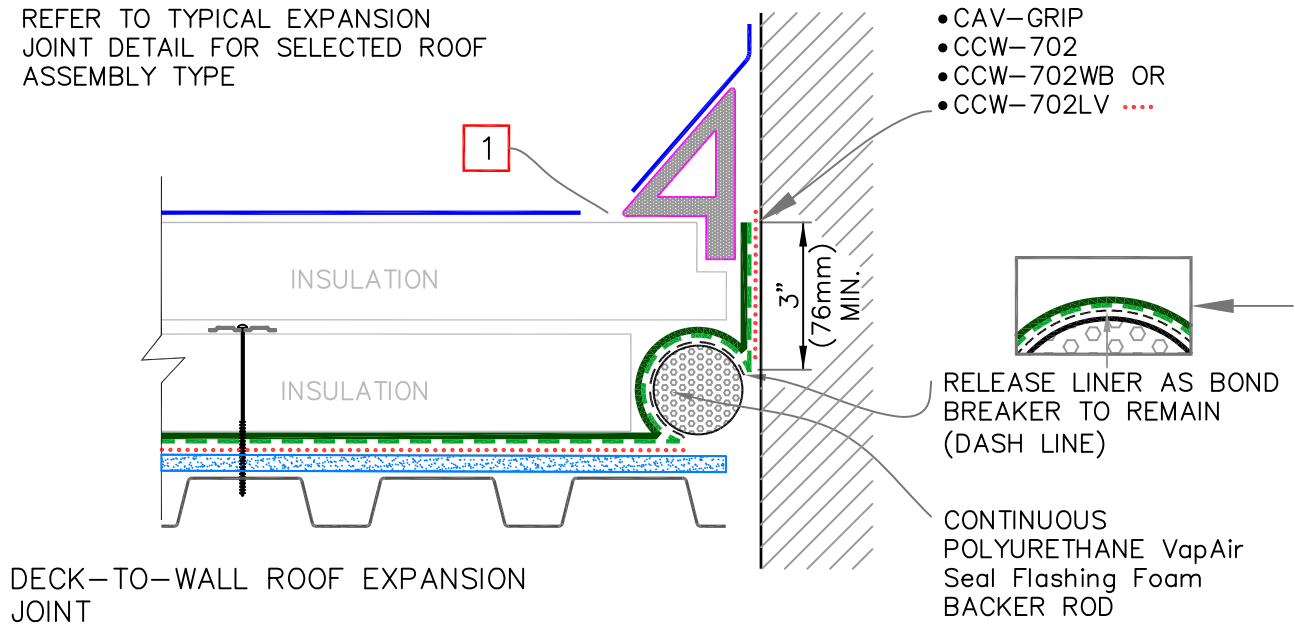
SEE SHEET **TR-0** FOR  
ADDITIONAL INFORMATION.

— VapAir Seal 725TR — ROOF MEMBRANE — BONDING ADHESIVE	<p>PARAPET (CONTINUOUS WALL) ROOF A&amp;VB TIE-IN TO WALL A&amp;VB</p> <p>A&amp;VB (AIR &amp; VAPOR BARRIER) AS REQUIRED BY DESIGNER</p>	<p>VapAir Seal 725TR</p> <p><math>\frac{\sum R_x (T_i)}{\sum R}</math></p>	<p>DETAIL NO.</p> <p>TR-1.4</p> <p>ADHERED A&amp;VB</p>
--	--	--	---



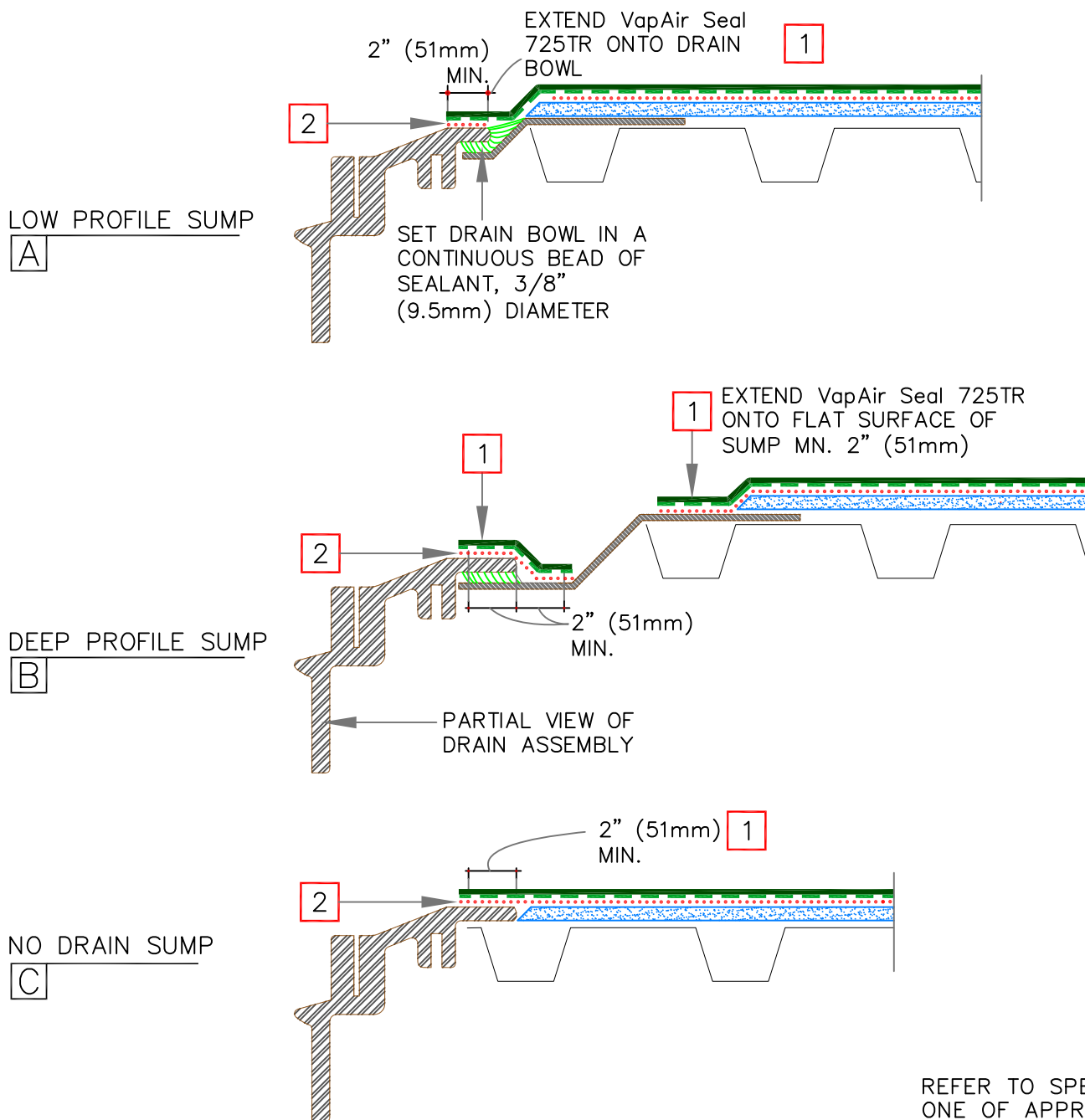
## NOTE:

1. REFER TO TYPICAL EXPANSION JOINT DETAIL FOR SELECTED ROOF ASSEMBLY TYPE



SEE SHEET **TR-0** FOR ADDITIONAL INFORMATION.

<div></div> — VapAir Seal 725TR	EXPANSION JOINTS	VapAir Seal 725TR	DETAIL NO.
<div></div> — ROOF MEMBRANE	A&VB (AIR & VAPOR BARRIER) AS REQUIRED BY DESIGNER	$= \frac{\sum R_x (T_i)}{\sum R}$	TR-3.1
<div></div> — BONDING ADHESIVE			ADHERED A&VB



## NOTES

1. HAND ROLL WITH 2" (51mm) WIDE PRESSURE-ROLLER & ENSURE ANY FISH-MOUTHS ARE SEALED WITH SEALANT.
2. USE PRIMER IF SURFACES ARE RUSTY/UNCLEAN/POOR ADHESION IS EXPERIENCED. VapAir Seal MD ADHERED TO METAL DECK AND STEEL PLATE.
3. ENSURE HOLES ARE OPEN BEFORE THE END OF THE DAY OR PRIOR TO RAIN.

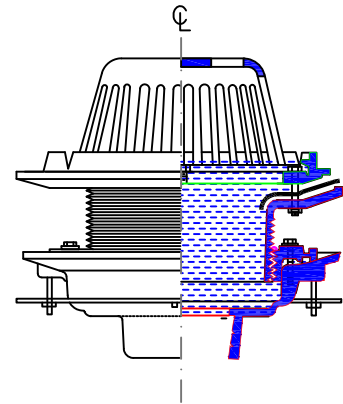
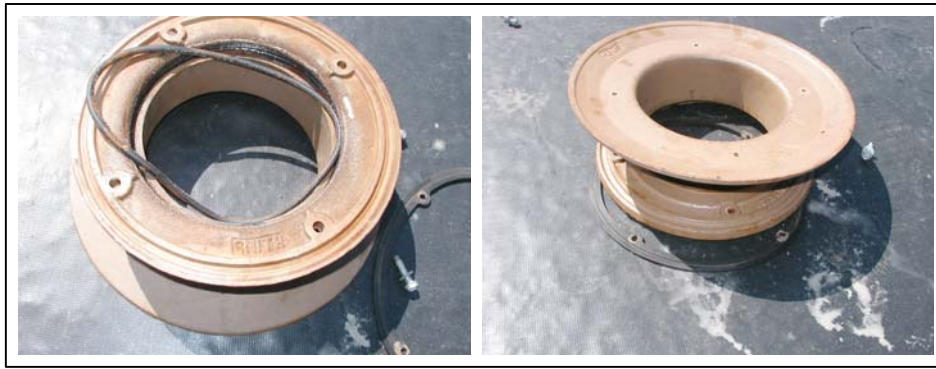
REFER TO SPECS FOR ONE OF APPROVED PRIMER/ADHESIVE:

- CAV-GRIP
- CCW-702
- CCW-702WB OR
- CCW-702LV .....

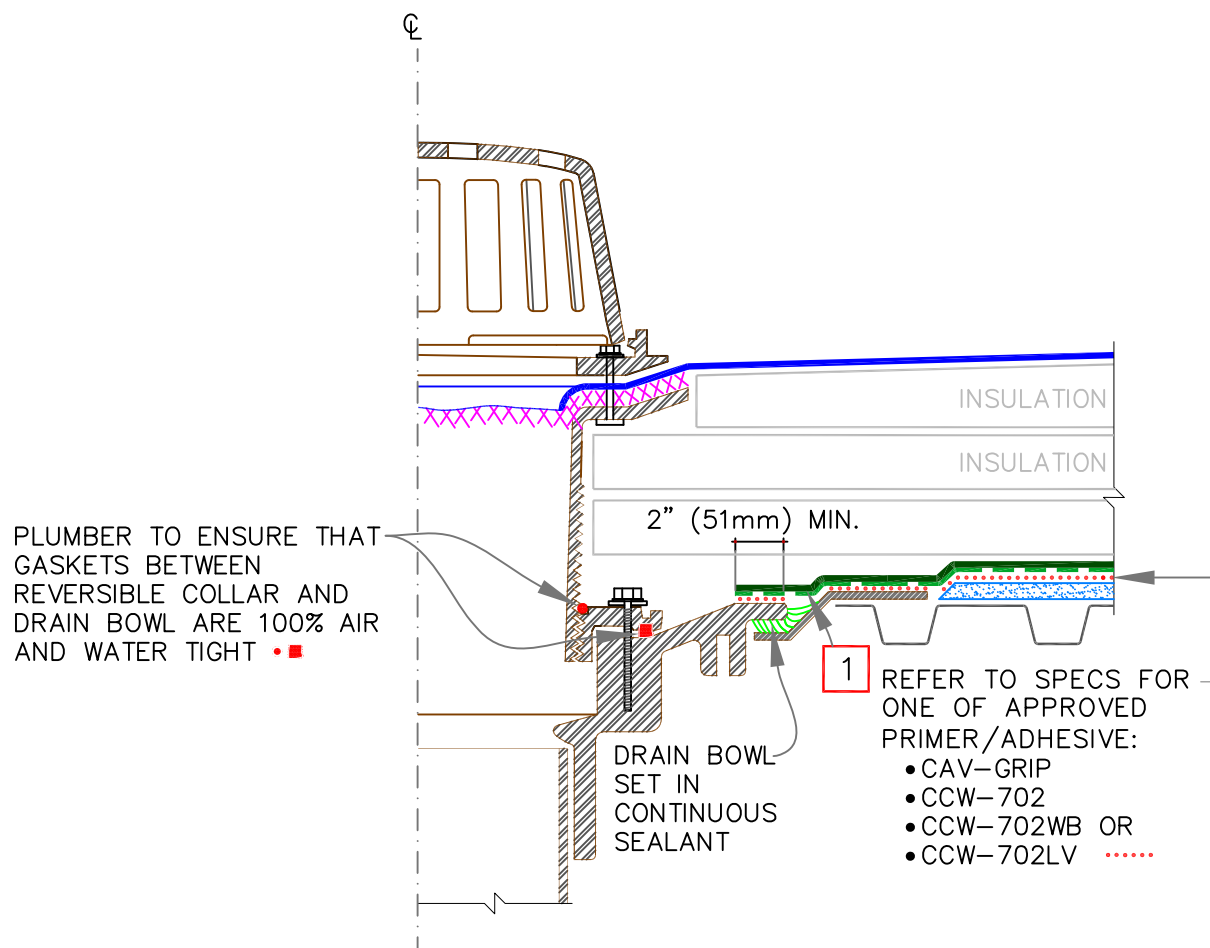
SEE SHEET **TR-0** FOR ADDITIONAL INFORMATION.

<div style="display: flex; align-items: center;"> <div style="width: 20px; height: 5px; background-color: green; border: 1px solid black; margin-right: 5px;"></div> VapAir Seal 725TR </div> <div style="display: flex; align-items: center;"> <div style="width: 20px; height: 5px; background-color: blue; border: 1px solid black; margin-right: 5px;"></div> ROOF MEMBRANE </div> <div style="display: flex; align-items: center;"> <div style="width: 20px; border-top: 1px dashed orange; margin-right: 5px;"></div> BONDING ADHESIVE </div>	ROOF DRAIN WITH VARYING SUMP CONDITIONS  A&VB (AIR & VAPOR BARRIER) AS REQUIRED BY DESIGNER	<div style="display: flex; align-items: center;"> <div style="font-size: 2em; color: red; margin-right: 10px;"> <math display="block">= \frac{\sum R_x (T_i)}{\sum R}</math> </div> <div style="border: 1px solid black; padding: 5px; text-align: center;"> VapAir Seal 725TR </div> </div>	DETAIL NO.  <b>TR-6.1</b>  ADHERED A&VB
---	---	--	---





ADJUSTABLE DRAIN – TYPE A

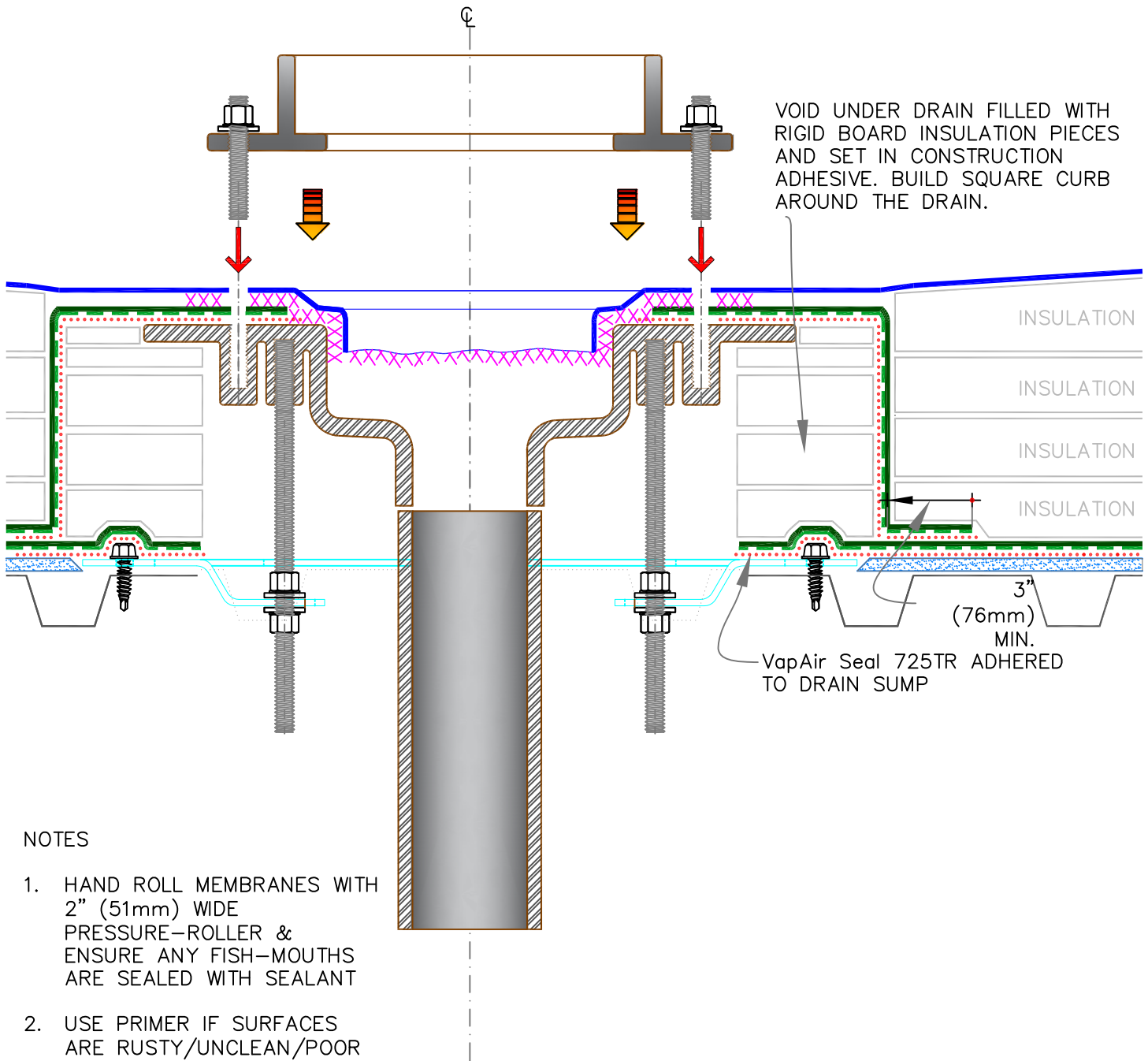


## NOTE

1. EXTEND VapAir Seal 725TR ONTO DRAIN'S FLAT AREA AND HAND ROLL WITH 2" (51mm) WIDE PRESSURE-ROLLER & ENSURE ANY FISH-MOUTHS ARE SEALED WITH SEALANT

SEE SHEET [TR-0](#) FOR ADDITIONAL INFORMATION.

<p>— VapAir Seal 725TR</p> <p>— ROOF MEMBRANE</p> <p>— BONDING ADHESIVE</p>	<p>ROOF DRAIN WITH ADJUSTABLE HEIGHT – TYPE A</p> <p>A&amp;VB (AIR &amp; VAPOR BARRIER) AS REQUIRED BY DESIGNER</p>	<p>VapAir Seal 725TR</p> <p>DETAIL NO.</p> <p>TR-6.2</p> <p>ADHERED A&amp;VB</p>
---	---	--

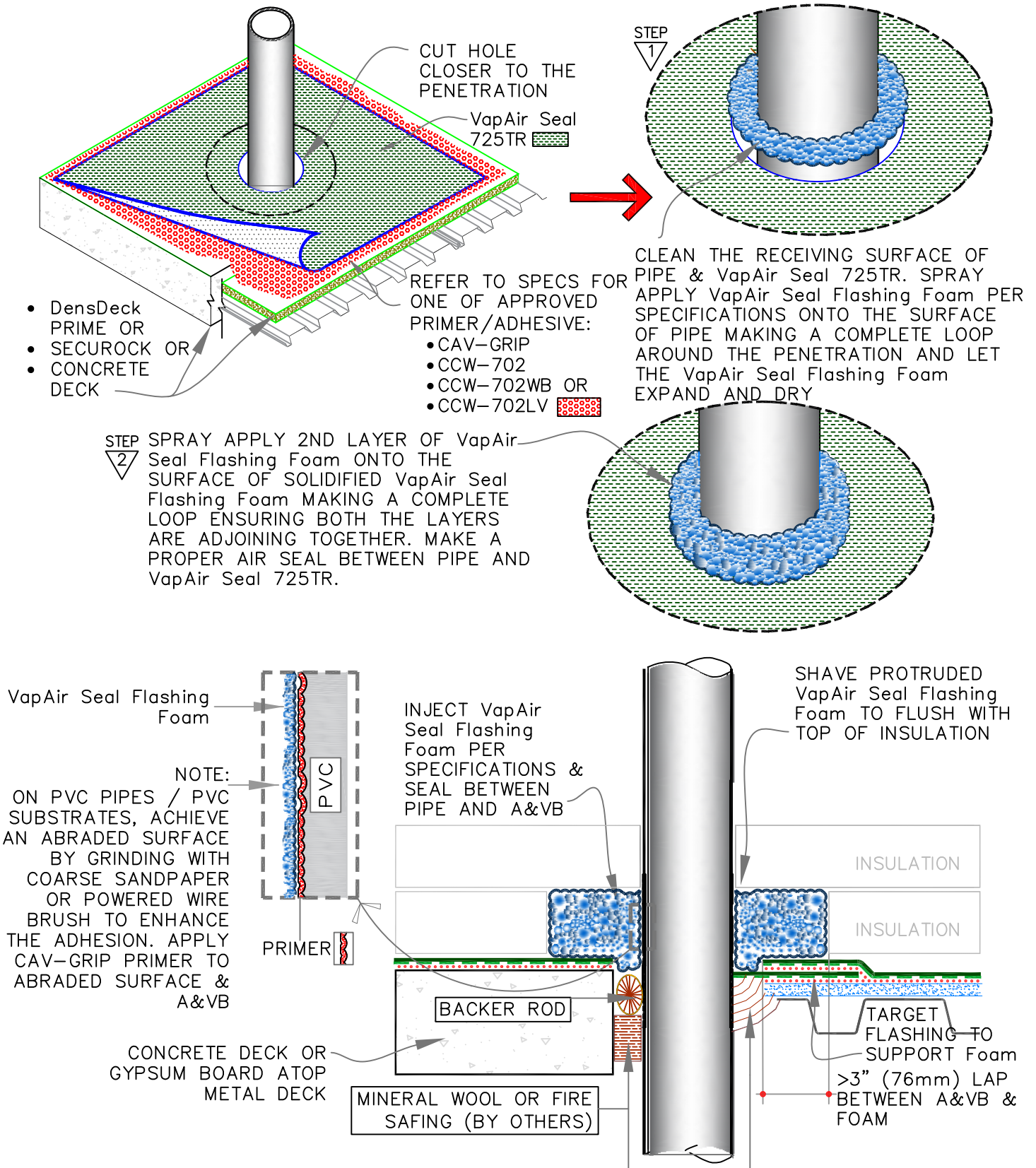


SEE SHEET **TR-0** FOR ADDITIONAL INFORMATION.

<div style="display: flex; align-items: center;"> <div style="width: 20px; height: 5px; background-color: green; border: 1px solid black; margin-right: 5px;"></div> <div>— VapAir Seal 725TR</div> </div> <div style="display: flex; align-items: center; margin-top: 5px;"> <div style="width: 20px; height: 2px; background-color: blue; border: 1px solid black; margin-right: 5px;"></div> <div>— ROOF MEMBRANE</div> </div> <div style="display: flex; align-items: center; margin-top: 5px;"> <div style="width: 20px; border-top: 1px dashed orange; margin-right: 5px;"></div> <div>— BONDING ADHESIVE</div> </div>	<div style="text-align: center;">ROOF DRAIN WITH ADJUSTABLE HEIGHT — TYPE B</div> <div style="text-align: center; font-size: small;">A&amp;VB (AIR &amp; VAPOR BARRIER) AS REQUIRED BY DESIGNER</div>	<div style="text-align: center; font-weight: bold;">VapAir Seal 725TR</div> <div style="text-align: center; font-size: small;">DETAIL NO.</div> <div style="text-align: center; font-size: large; font-weight: bold;">TR-6.3</div> <div style="text-align: center; font-size: small;">ADHERED A&amp;VB</div>
--	---	--

# AIR & VAPOR CONTROL LAYERS

NOTE: REFER TO DETAIL [TR-8.3](#), WHERE MULTIPLE PENETRATIONS EXIST IN ONE AREA



- VapAir Seal 725TR
- ROOF MEMBRANE
- BONDING ADHESIVE

PIPE FLASHING  
SEALED WITH VapAir Seal Flashing  
Foam PER SPECIFICATIONS

A&VB (AIR & VAPOR BARRIER) AS REQUIRED BY DESIGNER

VapAir Seal 725TR

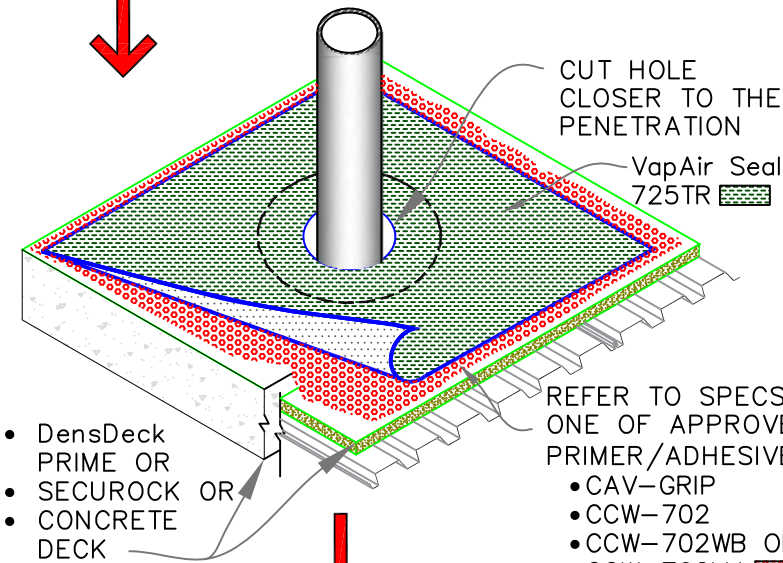
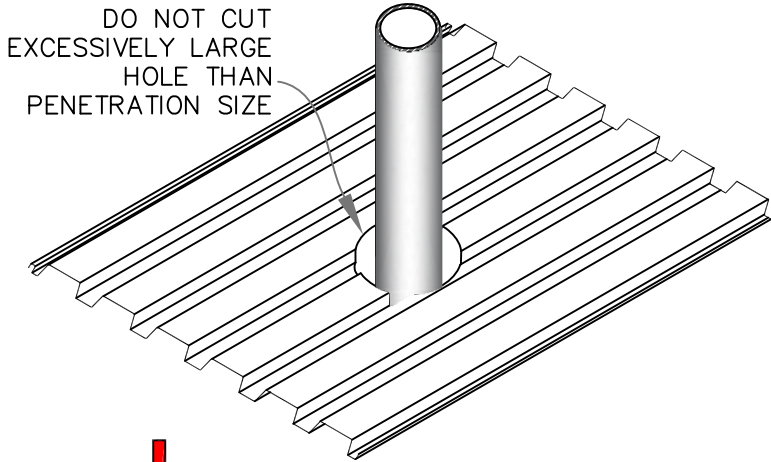
DETAIL NO.

TR-8.1

ADHERED A&VB

# AIR & VAPOR CONTROL LAYERS

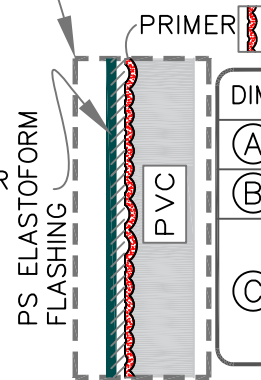
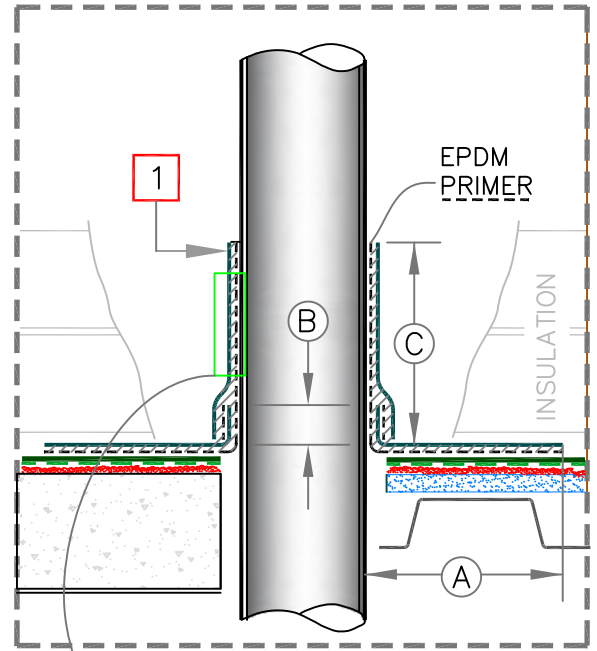
NOTE: REFER TO DETAIL [TR-8.3](#), WHERE MULTIPLE PENETRATIONS EXIST IN ONE AREA



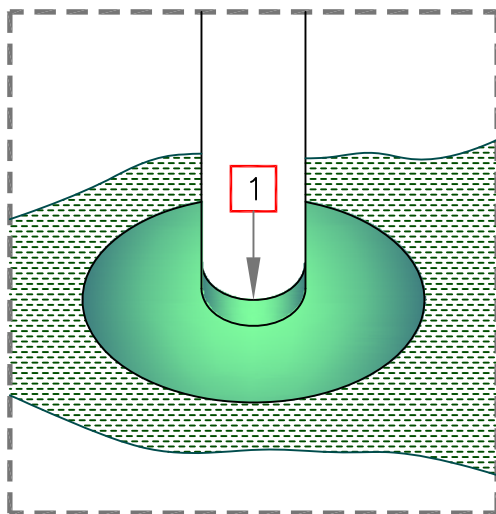
- DensDeck PRIME OR
- SECURROCK OR
- CONCRETE DECK

REFER TO SPECS FOR ONE OF APPROVED PRIMER/ADHESIVE:

- CAV-GRIP
- CCW-702
- CCW-702WB OR
- CCW-702LV

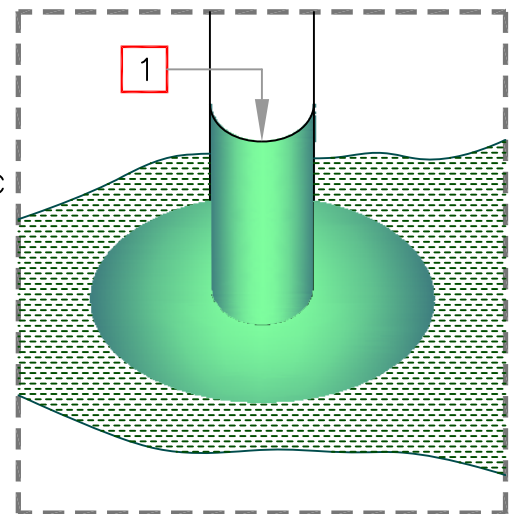


DIMENSIONS	mm	
(A)	3"	76 MIN.
(B)	1/2"	13 MIN.
(C)	MIN. 3" (76mm) OR MAX. BELOW THE HEIGHT OF INSULATION	



1 PRESSURE-SENSITIVE ELASTOFORM FLASHING IN CONJUNCTION WITH EPDM PRIMER.

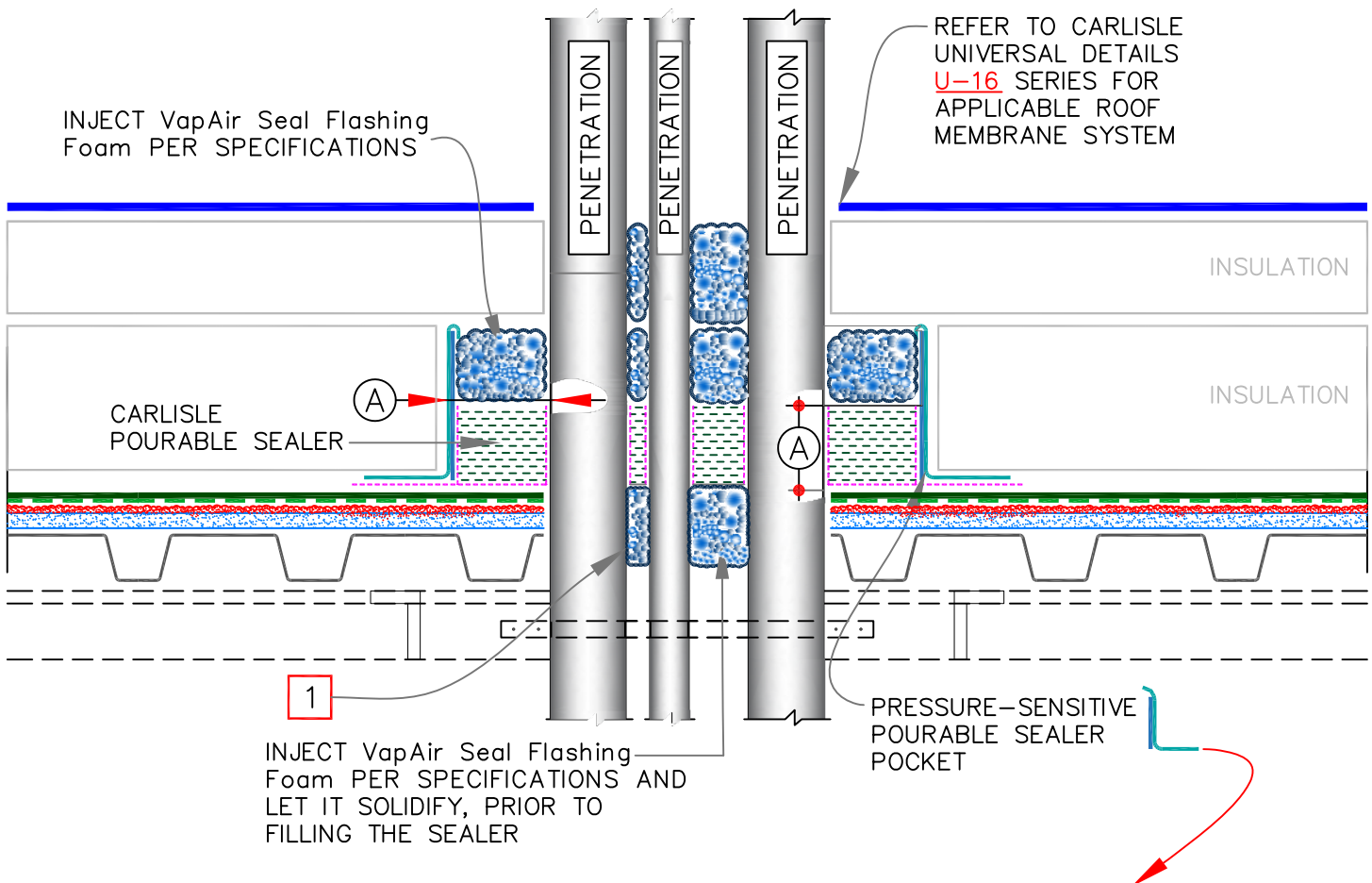
NOTE: ON PVC PIPES / PVC SUBSTRATES, ACHIEVE AN ABRADED SURFACE BY GRINDING WITH COARSE SANDPAPER OR POWERED WIRE BRUSH TO ENHANCE THE ADHESION. APPLY CAV-GRIP PRIMER TO ABRADED SURFACE & A&VB



SEE SHEET [TR-0](#) FOR ADDITIONAL INFORMATION.

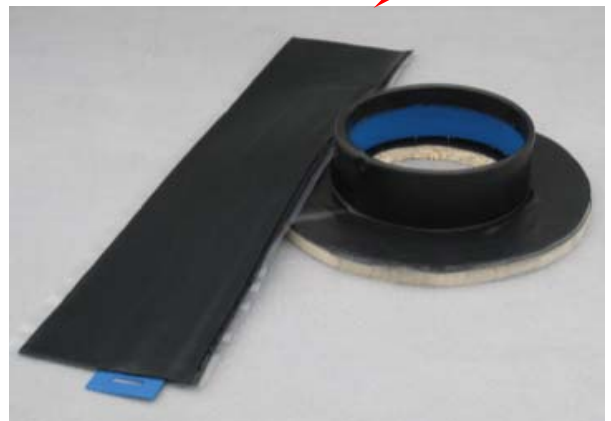
<ul style="list-style-type: none"> <li>— VapAir Seal 725TR</li> <li>— ROOF MEMBRANE</li> <li>— BONDING ADHESIVE</li> </ul>	<p>PIPE FLASHING</p> <p>PRESSURE-SENSITIVE ELASTOFORM FLASHING</p> <p>A&amp;VB (AIR &amp; VAPOR BARRIER) AS REQUIRED BY DESIGNER</p>	<p>VapAir Seal 725TR</p> <p>DETAIL NO.</p> <p>TR-8.2</p> <p>ADHERED A&amp;VB</p>
--	--	--





## NOTES:

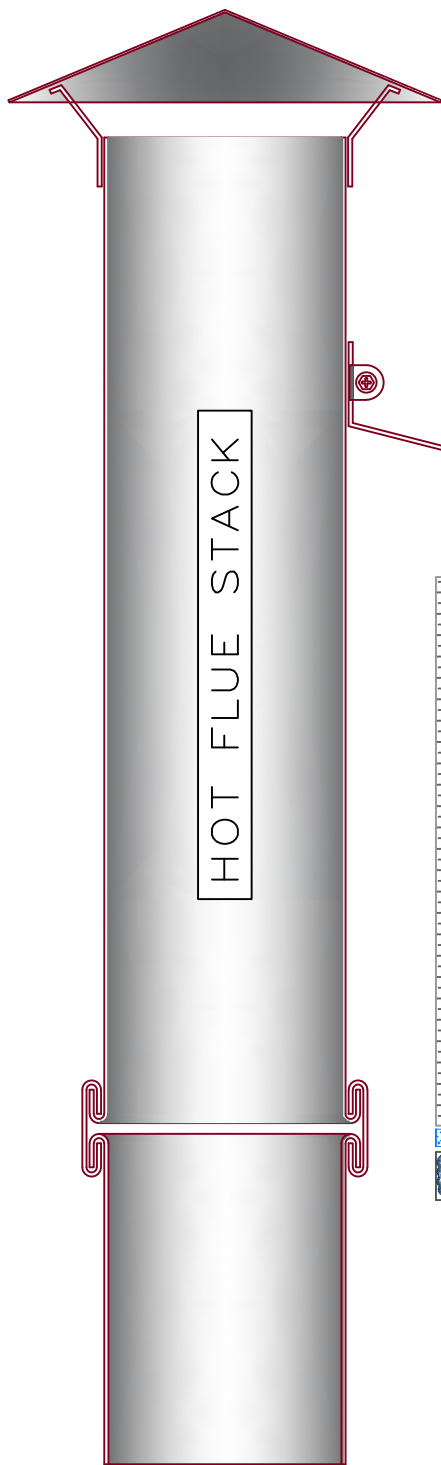
1. THE MAXIMUM ALLOWABLE SURFACE TEMPERATURE OF THE PENETRATION SHALL NOT EXCEED 180° F (82° C).
2. PENETRATIONS, AIR & VAPOR BARRIER, FLASHING AND METAL (INSIDE POCKET) MUST BE PRIMED WITH EPDM PRIMER PRIOR TO APPLYING POURABLE SEALER. DO NOT PRIME THE BLUE PLASTIC SUPPORT STRIP.
3. POURABLE SEALER MUST CONTACT PRIMED PRESSURE-SENSITIVE ELASTOFORM FLASHING AND AIR & VAPOR BARRIER.
4. PIPE CLUSTERS MUST HAVE MINIMUM 1" (25mm) CLEARANCE BETWEEN PENETRATIONS.
5. 22 GAUGE STEEL STRIPS TO FILL GAPS & SUPPORT THE SEALER POCKET. FASTEN INTO DECK



DIMENSIONS		mm	
(A)	1/2"	13	TO
	1"	25	

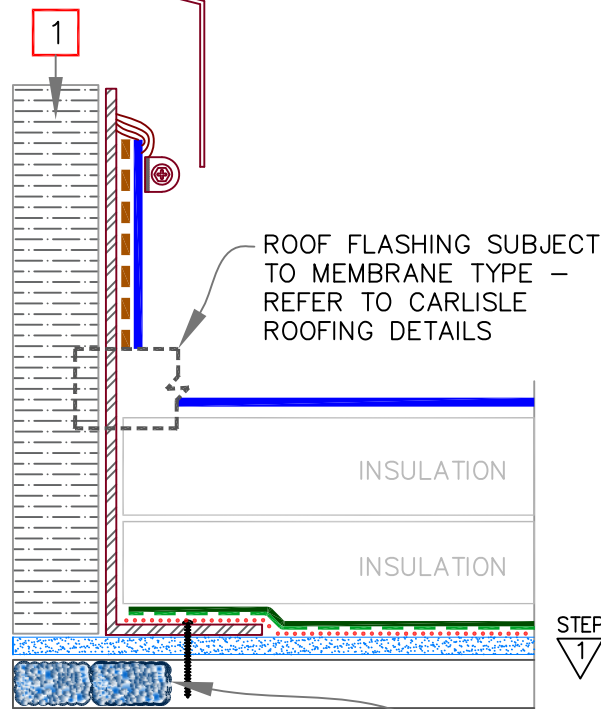
SEE SHEET **TR-0** FOR ADDITIONAL INFORMATION.

— VapAir Seal 725TR — ROOF MEMBRANE — BONDING ADHESIVE	PIPE FLASHING		VapAir Seal 725TR
	MULTIPLE PIPES IN GROUP		DETAIL NO.
	A&VB (AIR & VAPOR BARRIER) AS REQUIRED BY DESIGNER		TR-8.3
			ADHERED A&VB



NOTE

1. USE OF HIGH TEMPERATURE STACK INSULATION IS RECOMMENDED TO PROTECT VapAir Seal 725TR FROM EXTREME TEMPERATURE



ROOF FLASHING SUBJECT TO MEMBRANE TYPE – REFER TO CARLISLE ROOFING DETAILS

INSULATION

INSULATION

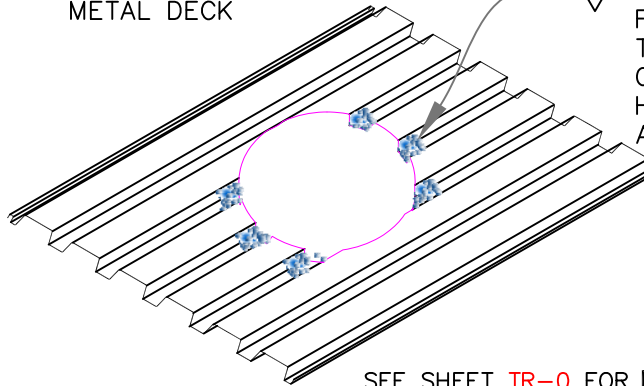
STEP 1

SUBSTRATE BOARD IS INSTALLED FIRST TO CONTAIN VapAir Seal Flashing Foam INSULATION

HEAVY GAUGE ROUND/SQUARE CURB SECURED TO METAL DECK

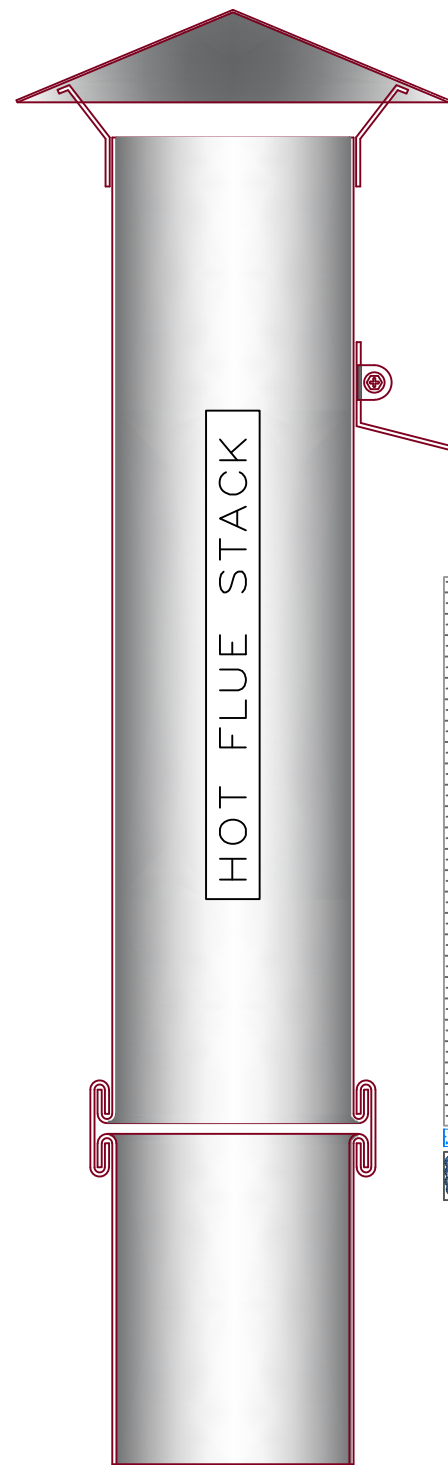
STEP 2

FILL THE BOTTOM FLUTES WITH VapAir Seal Flashing Foam PER SPECIFICATIONS TO AVOID THE MIGRATION OF HUMID AIR, STEAM, OR HOT GASES LEAKING FROM ADJACENT FLUE.



SEE SHEET [TR-0](#) FOR ADDITIONAL INFORMATION.

— VapAir Seal 725TR — ROOF MEMBRANE — BONDING ADHESIVE	HOT VENT STACK WITH METAL CURB AT DECK A&VB (AIR & VAPOR BARRIER) AS REQUIRED BY DESIGNER	VapAir Seal 725TR DETAIL NO. $\frac{\sum R \times (T_i - T_o)}{\sum R}$ TR-8.6A ADHERED A&VB
--	--	--



NOTE

1. USE OF HIGH TEMPERATURE STACK INSULATION IS RECOMMENDED TO PROTECT VapAir Seal 725TR FROM EXTREME TEMPERATURE

1

ROOF FLASHING SUBJECT  
TO MEMBRANE TYPE –  
REFER TO CARLISLE  
\_ ROOFING DETAILS

– ROOF MEMBRANE FULLY ADHERED TO TRANSITION PIECE OR USE TWO CONTINUOUS BEADS OF SEALANT <<<>>>

- 45 MIL (1.14mm) MIN. EPDM  
TRANSITION PIECE FULLY  
ADHERED.

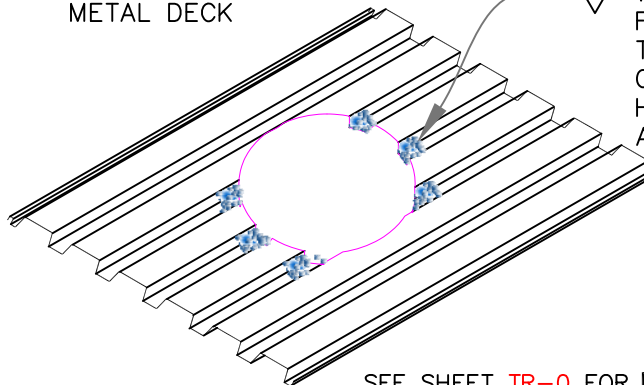
STEP  
1

SUBSTRATE BOARD  
IS INSTALLED FIRST  
TO CONTAIN VapAir  
Seal Flashing Foam  
INSULATION



STEP  
2

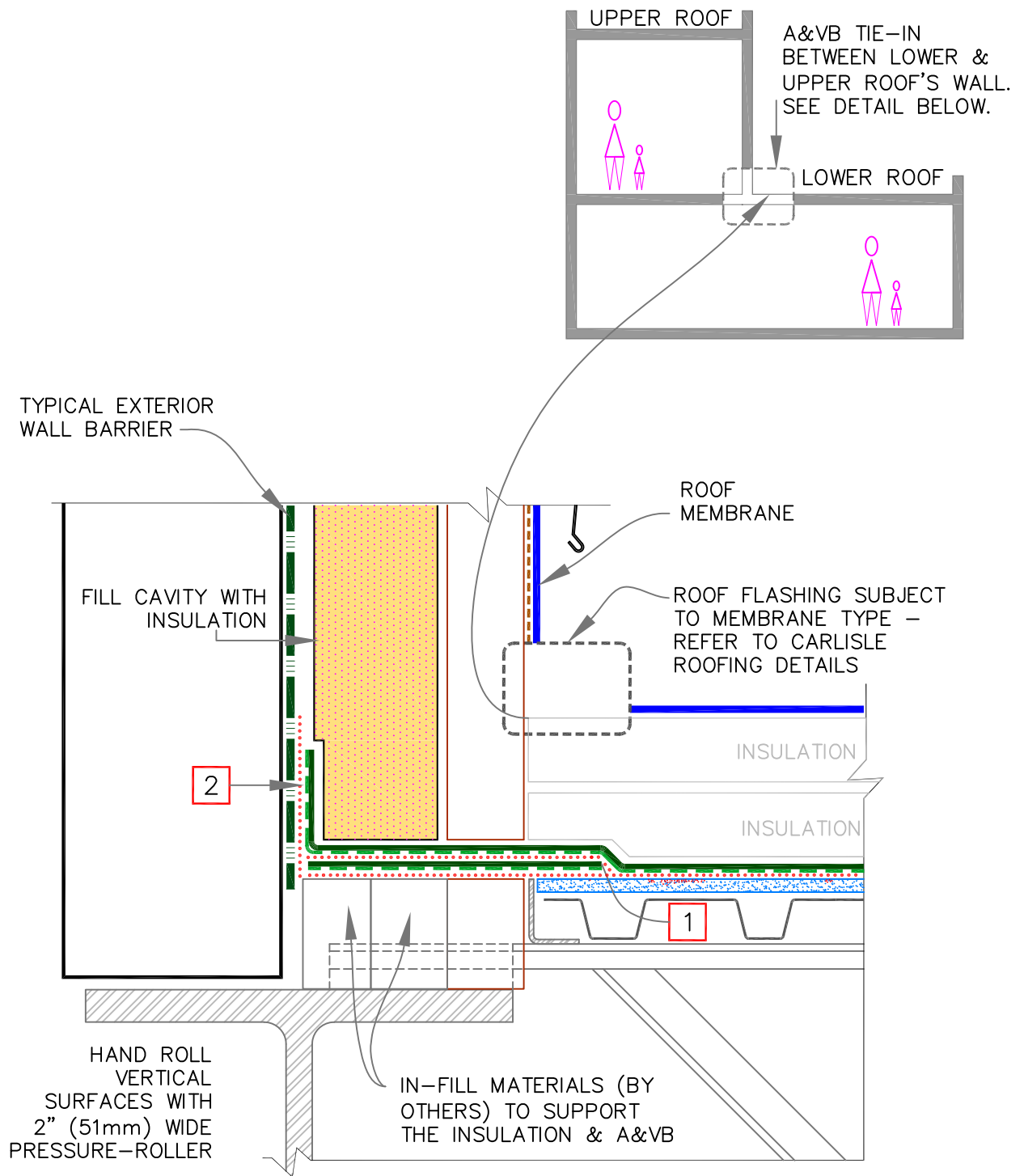
FILL THE BOTTOM FLUTES WITH VapAir Seal Flashing Foam PER SPECIFICATIONS TO AVOID THE MIGRATION OF HUMID AIR, STEAM, OR HOT GASES LEAKING FROM ADJACENT FLUE.

HEAVY GAUGE  
ROUND/SQUARE  
CURB SECURED TO  
METAL DECK



SEE SHEET TR-0 FOR  
ADDITIONAL INFORMATION.




 — VapAir Seal 725TR  — ROOF MEMBRANE  — BONDING ADHESIVE	HOT VENT STACK WITH WOOD CURB A&VB (AIR & VAPOR BARRIER) AS REQUIRED BY DESIGNER		DETAIL NO.
			TR-8.6B
			ADHERED A&VB



## NOTES:

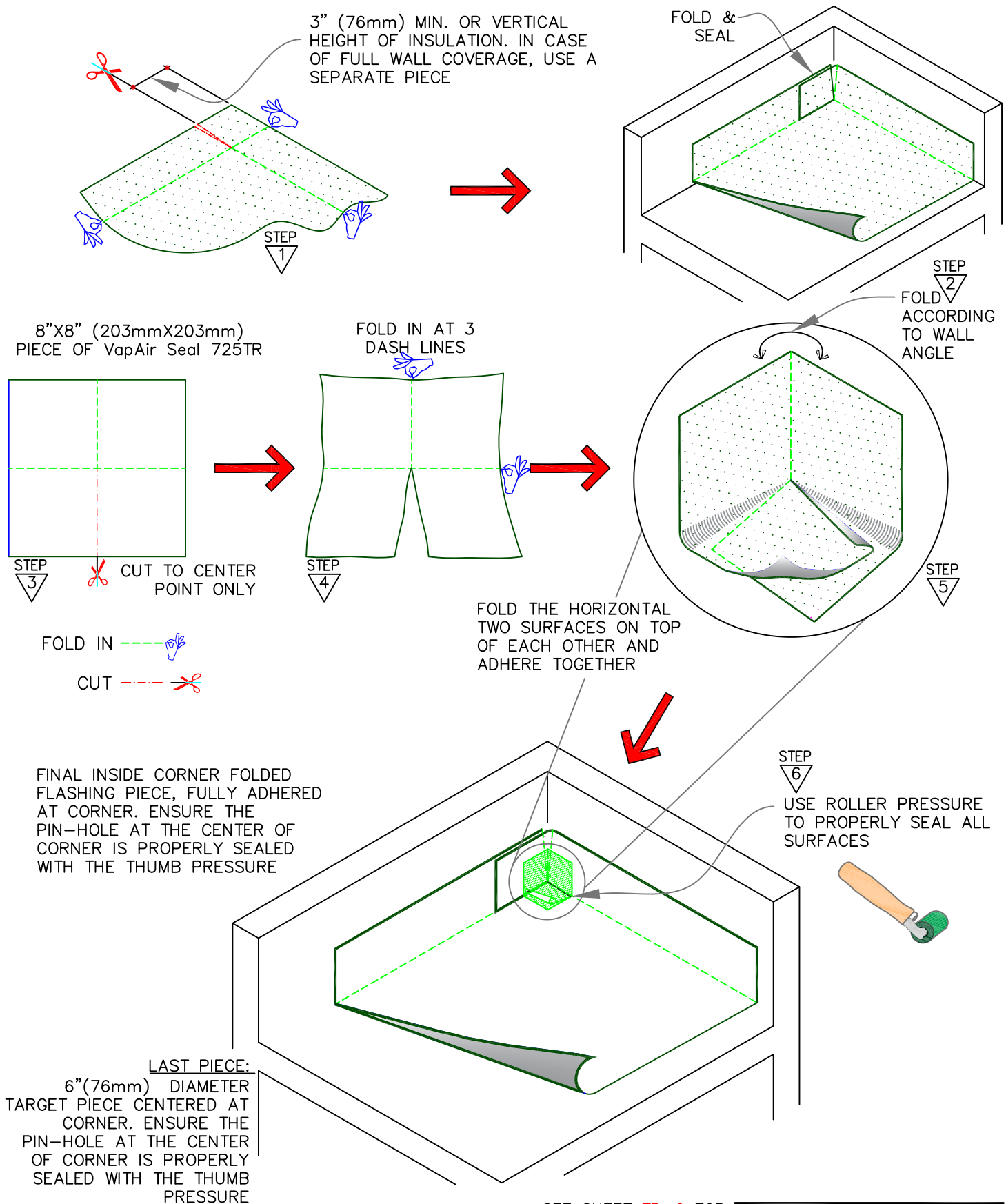
1. SET THRU-WALL STAINLESS STEEL STRIP FLASHING AND EXTEND IT OUT MIN. 3" (76mm) (BY OTHERS).
2. EXTEND VapAir Seal 725TR MIN. 6" (152mm) VERTICAL AND FULLY ADHERE TO WALL'S A&VB. WHEN WALL'S A&VB IS NOT INSTALLED YET, THEN ADHERE TO WALL. WALL BARRIER SHALL BE FULLY ADHERED TO VapAir Seal 725TR.

SEE SHEET [TR-0](#) FOR ADDITIONAL INFORMATION.

	— VapAir Seal 725TR	TIE-IN TO UPPER STORY WALL	$= \frac{\sum R_x (T_i)}{\sum R}$	VapAir Seal 725TR
	— ROOF MEMBRANE			DETAIL NO.
	— BONDING ADHESIVE	A&VB (AIR & VAPOR BARRIER) AS REQUIRED BY DESIGNER		TR-12.1
				ADHERED A&VB



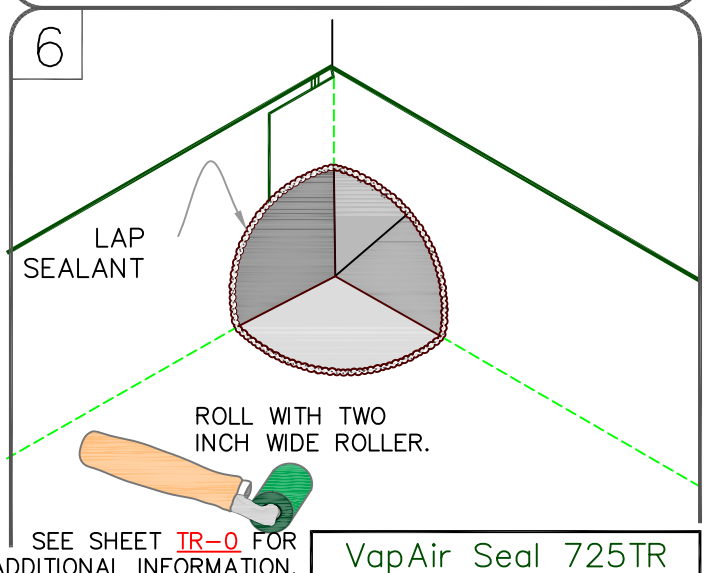
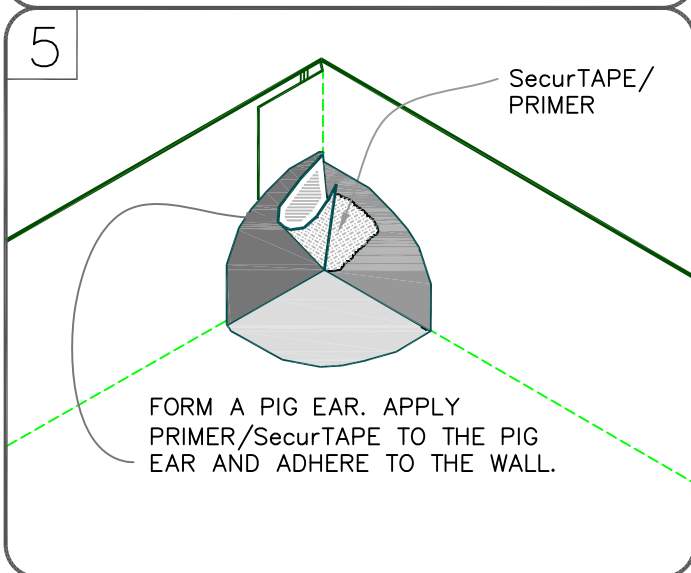
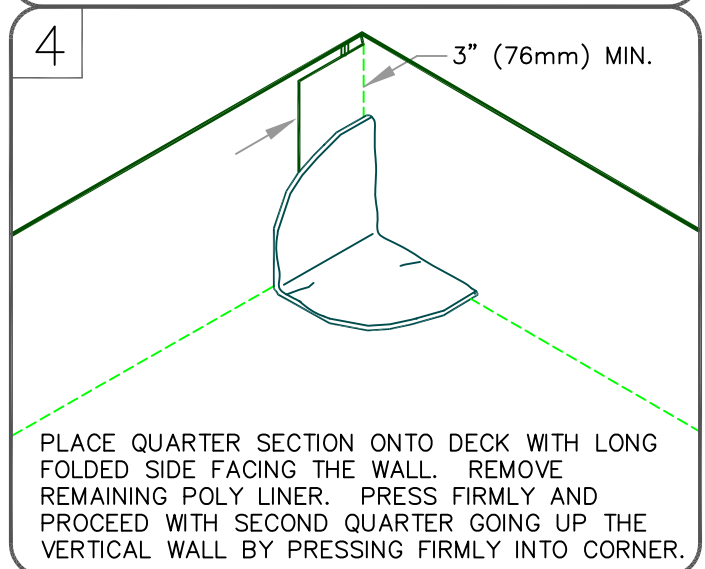
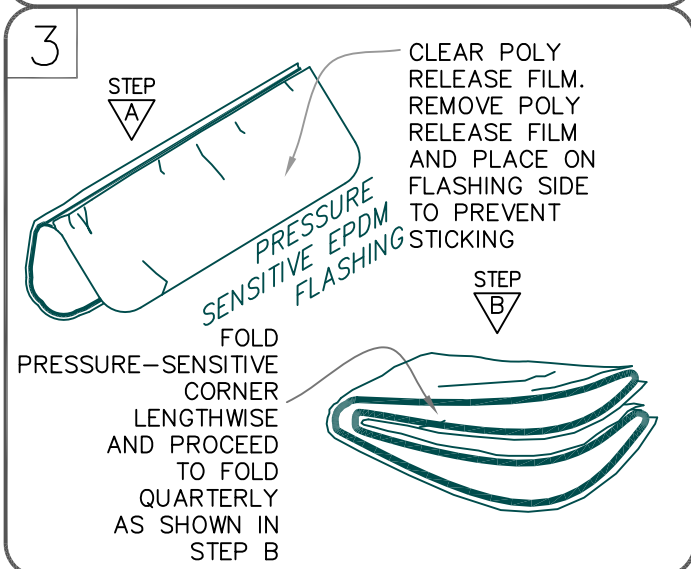
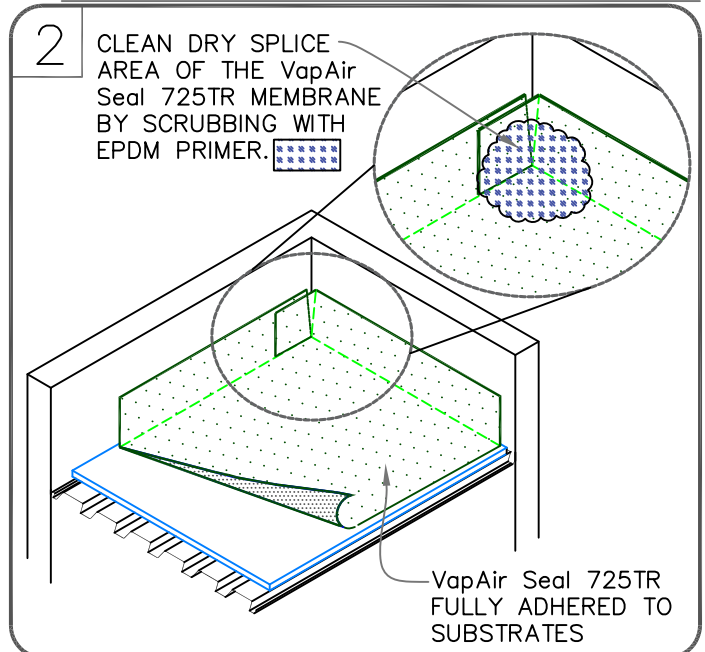
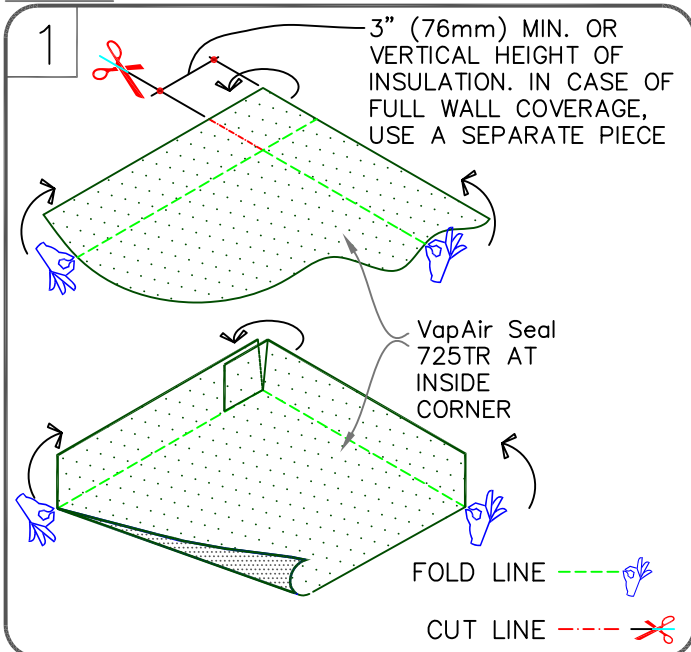
# AIR & VAPOR CONTROL LAYERS



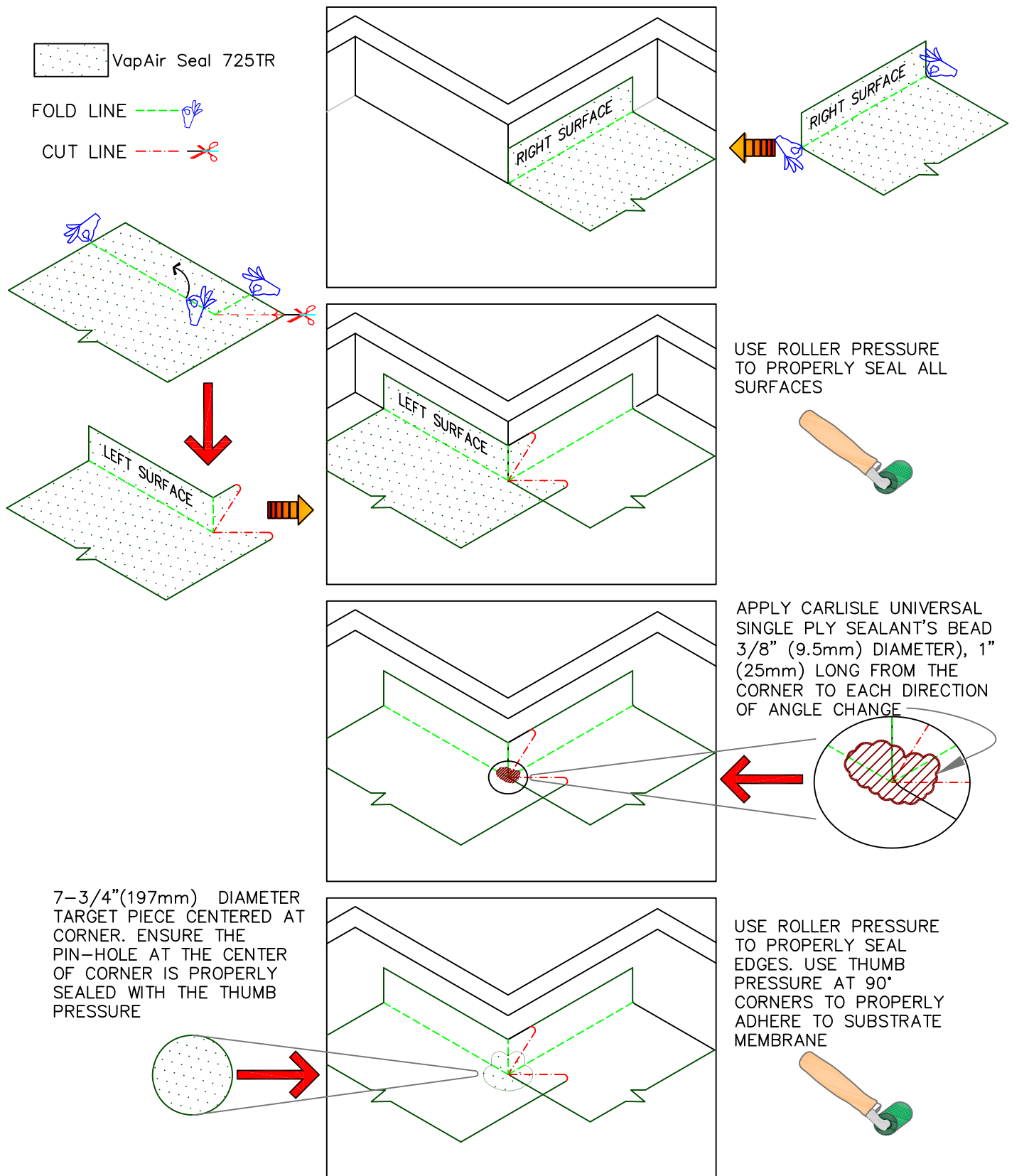
SEE SHEET [TR-0](#) FOR ADDITIONAL INFORMATION.

VapAir Seal 725TR

<p>— VapAir Seal 725TR</p> <p>— ROOF MEMBRANE</p> <p>— BONDING ADHESIVE</p>	<p>INSIDE CORNER WITH VapAir Seal 725TR FLASHING</p> <p>A&amp;VB (AIR &amp; VAPOR BARRIER) AS REQUIRED BY DESIGNER</p>	<p>DETAIL NO.</p> <p>TR-15.1A</p> <p>ADHERED A&amp;VB</p>
---	--	---



<p>— VapAir Seal 725TR</p> <p>— ROOF MEMBRANE</p> <p>— BONDING ADHESIVE</p>	<p>INSIDE CORNER WITH PRESSURE-SENSITIVE ELASTOFORM EPDM</p> <p>A&amp;VB (AIR &amp; VAPOR BARRIER) AS REQUIRED BY DESIGNER</p>	<p>VapAir Seal 725TR</p> <p>DETAIL NO.</p> <p>TR-15.1B</p> <p>ADHERED A&amp;VB</p>
---	--	--



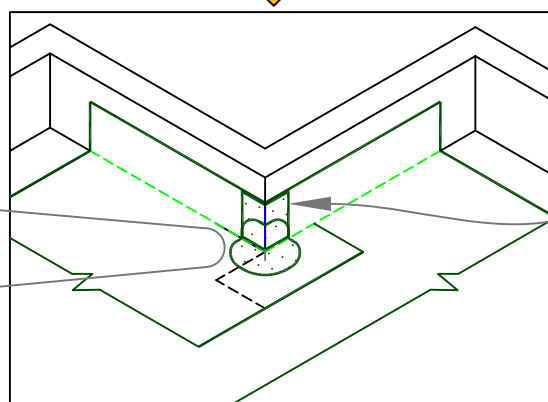
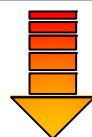
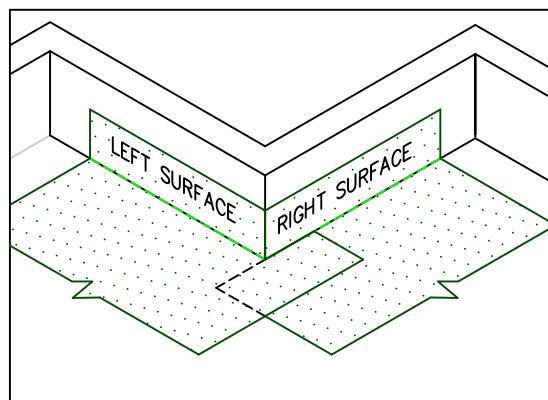
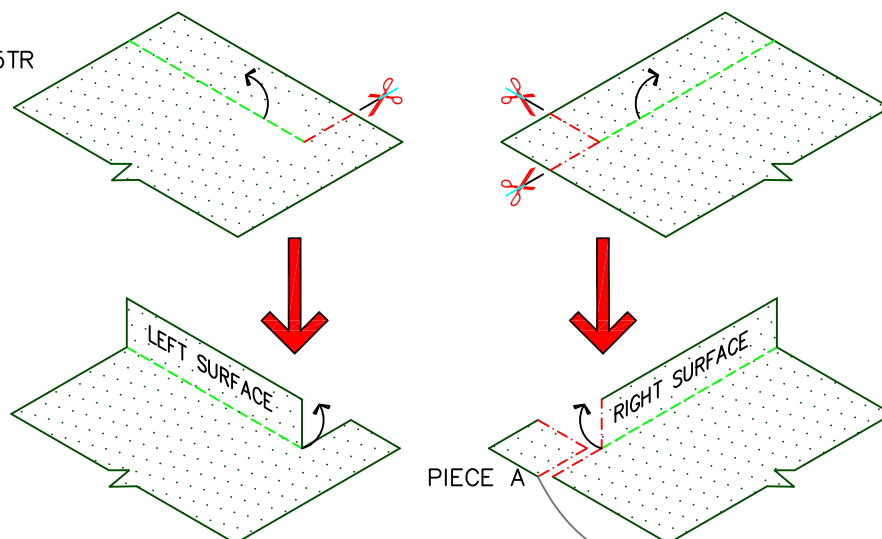
SEE SHEET **TR-0** FOR ADDITIONAL INFORMATION.

<p>——— VapAir Seal 725TR</p> <p>——— ROOF MEMBRANE</p> <p>----- BONDING ADHESIVE</p>	<p>OUTSIDE CORNER WITH VapAir Seal 725TR FLASHING OPTION A</p> <p>A&amp;VB (AIR &amp; VAPOR BARRIER) AS REQUIRED BY DESIGNER</p>	<p>VapAir Seal 725TR</p> <p>DETAIL NO.</p> <p>TR-15.2A</p> <p>ADHERED A&amp;VB</p>
---	--	--

 VapAir Seal 725TR

FOLD LINE 

CUT LINE 



**LAST PIECE:**  
6" (76mm) DIAMETER  
TARGET PIECE CENTERED AT  
CORNER. ENSURE THE  
PIN-HOLE AT THE CENTER  
OF CORNER IS PROPERLY  
SEALED WITH THE THUMB  
PRESSURE

PIECE A



FOLD AT  
CENTER

USE ROLLER PRESSURE  
TO PROPERLY SEAL ALL  
SURFACES



SEE SHEET **TR-0** FOR  
ADDITIONAL INFORMATION.

VapAir Seal 725TR

DETAIL NO.

TR-15.2B

ADHERED A&VB

 — VapAir Seal 725TR

 — ROOF MEMBRANE

 — BONDING ADHESIVE

OUTSIDE CORNER WITH  
VapAir Seal 725TR FLASHING  
OPTION B

A&VB (AIR & VAPOR BARRIER) AS REQUIRED BY DESIGNER

$$= \frac{\sum R_x (T_i)}{\sum R}$$