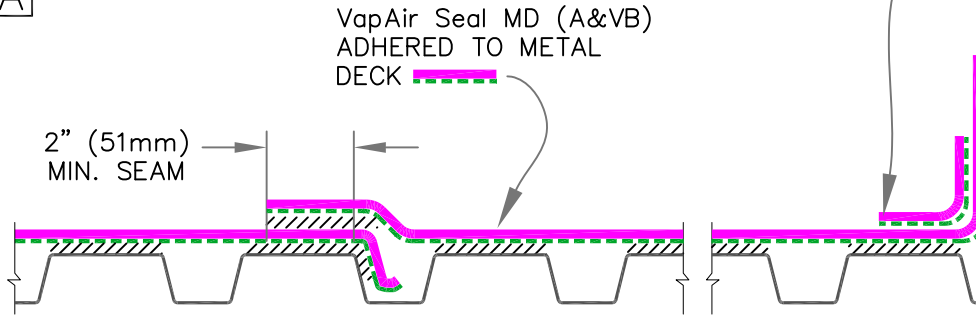


AIR & VAPOR CONTROL LAYERS

SIDE LAP DETAIL

A

SEE MD-0 PAGE
2 OF 2

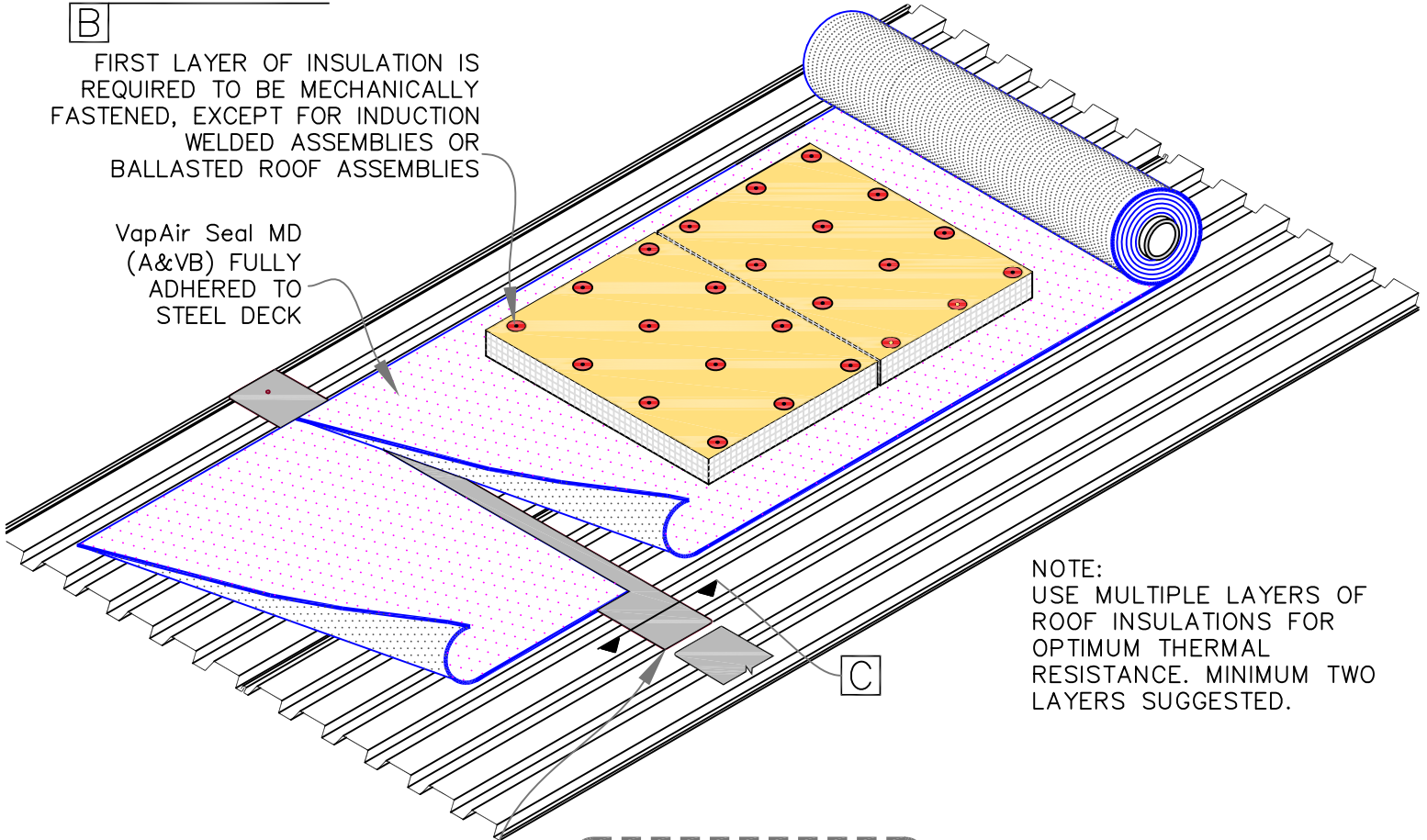


3-D END-LAP ASSEMBLY

B

FIRST LAYER OF INSULATION IS
REQUIRED TO BE MECHANICALLY
FASTENED, EXCEPT FOR INDUCTION
WELDED ASSEMBLIES OR
BALLASTED ROOF ASSEMBLIES

VapAir Seal MD
(A&VB) FULLY
ADHERED TO
STEEL DECK

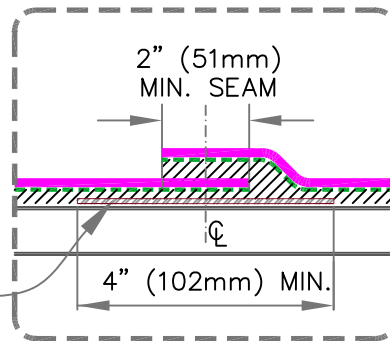


NOTE:
USE MULTIPLE LAYERS OF
ROOF INSULATIONS FOR
OPTIMUM THERMAL
RESISTANCE. MINIMUM TWO
LAYERS SUGGESTED.

MIN. 4" (102mm) WIDE METAL STRIPS
UNDER END LAPS WITH ROUNDED
CORNERS, CENTRALLY ALIGNED WITH
SEAM ABOVE.

OPTION:

CONTRACTOR MAY USE VapAir Seal MD
STRIPPING IN LIEU OF SHEET METAL
STRIPPING.



SEAM CROSS-SECTION

C

SEE MD-0 (PAGE 1 & 2) FOR
ADDITIONAL INFORMATION.

	→ VapAir Seal MD
	→ ROOF MEMBRANE
	→ CAV-GRIP, CCW-702 OR CCW-702LV
	→ SEE NOTE

1

INSTALLATION (PAGE 1 OF 2)

A&VB (AIR & VAPOR BARRIER) AS REQUIRED BY DESIGNER

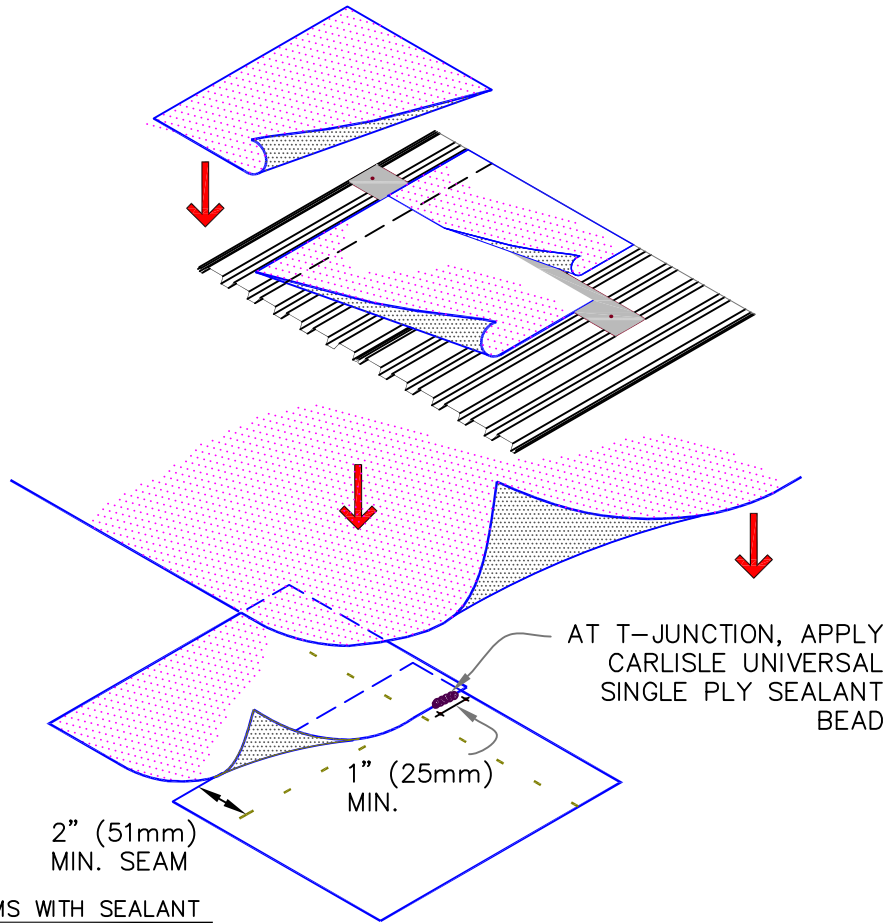
VapAir Seal MD

DETAIL NO.

MD-0

ADHERED A&VB

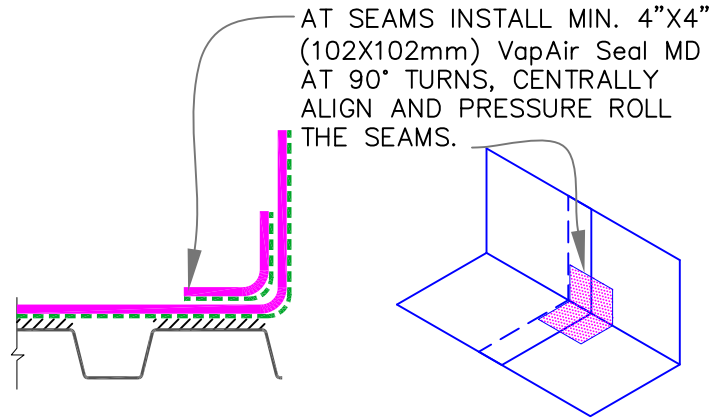
$$= \frac{\sum R_x (T_i)}{\sum R}$$



D

NOTES:

1. EXTEND VapAir Seal MD TO TOP EDGE OF ROOF INSULATION OR MIN. 2" (51mm).
2. HAND ROLL VERTICAL SURFACES WITH 2" (51mm) WIDE PRESSURE ROLLER.
3. WHEN VapAir Seal MD HAS TO BE EXTENDED UP THE WALL (TO SEAL WITH EXTERIOR WALL BARRIERS), IT SHOULD BE COVERED WITH INSULATION BOARD (MIN. R-VALUE 6) TO AVOID CONDENSATION AND ALSO TO AVOID UNEQUAL EXPANSION/CONTRACTION OF MEMBRANES. BOARD WILL PROVIDE A SUBSTRATE FOR ROOF MEMBRANE ALSO.
4. DIRECT ADHESION OF ROOF MEMBRANE TO VapAirseal MD IS NOT RECOMMENDED.



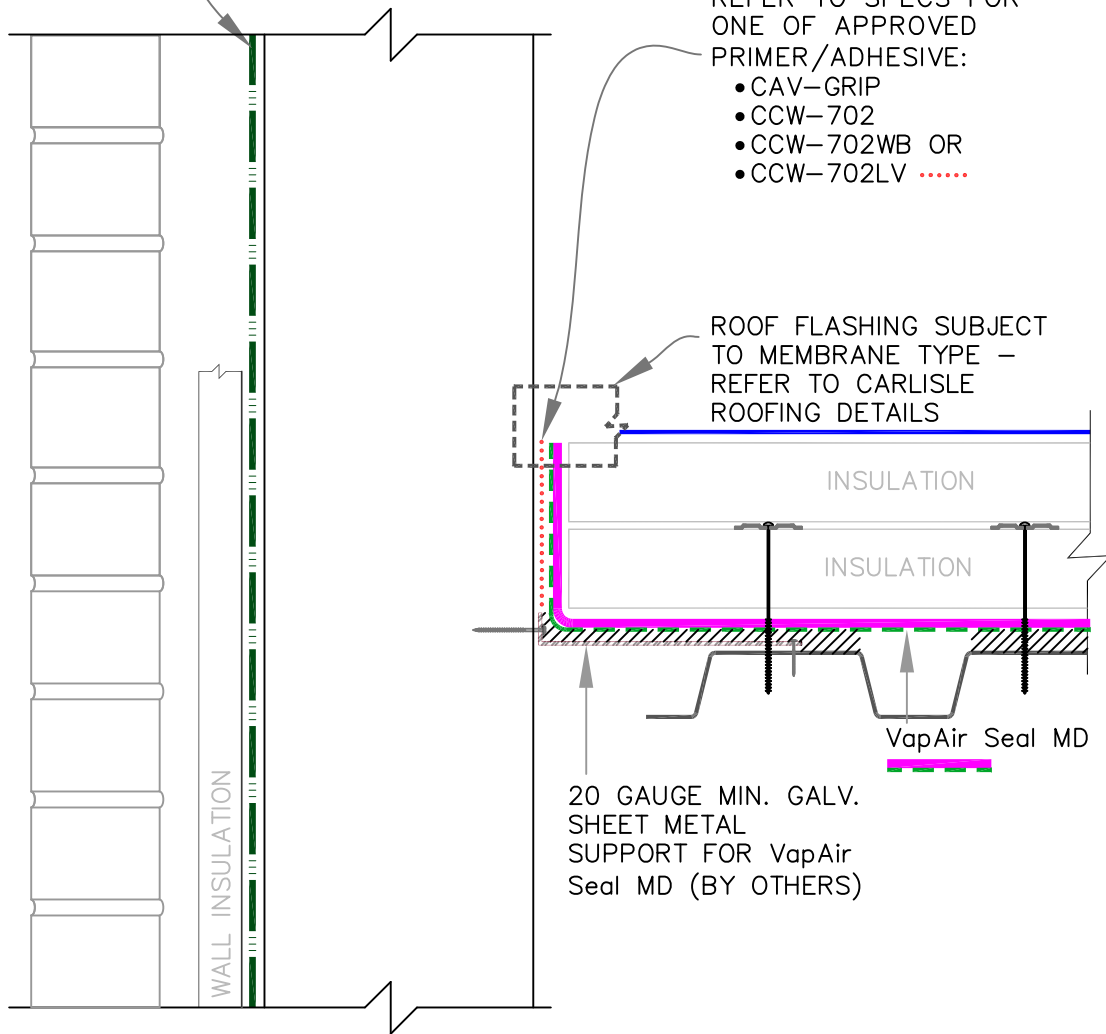
ROOF TO WALL TRANSITION

E





SEE MD-0 (PAGE 1 & 2) FOR ADDITIONAL INFORMATION.

<p>→ VapAir Seal MD</p> <p>→ ROOF MEMBRANE</p> <p>→ CAV-GRIP, CCW-702 OR CCW-702LV</p> <p>→ SEE NOTE</p> <p>1</p>	<p>INSTALLATION (PAGE 2 OF 2)</p> <p>A&VB (AIR & VAPOR BARRIER) AS REQUIRED BY DESIGNER</p>	<p>VapAir Seal MD</p> <p>DETAIL NO.</p> <p>MD-0</p> <p>ADHERED A&VB</p>
---	---	---

TYPICAL EXTERIOR
WALL BARRIER



SEE [MD-0 \(PAGE 1 & 2\)](#) FOR
ADDITIONAL INFORMATION.

	→ VapAir Seal MD
	→ ROOF MEMBRANE
	→ CAV-GRIP, CCW-702 OR CCW-702LV
	→ SEE NOTE

PARAPET (NO TIE-IN TO WALL
VAPOR BARRIER)

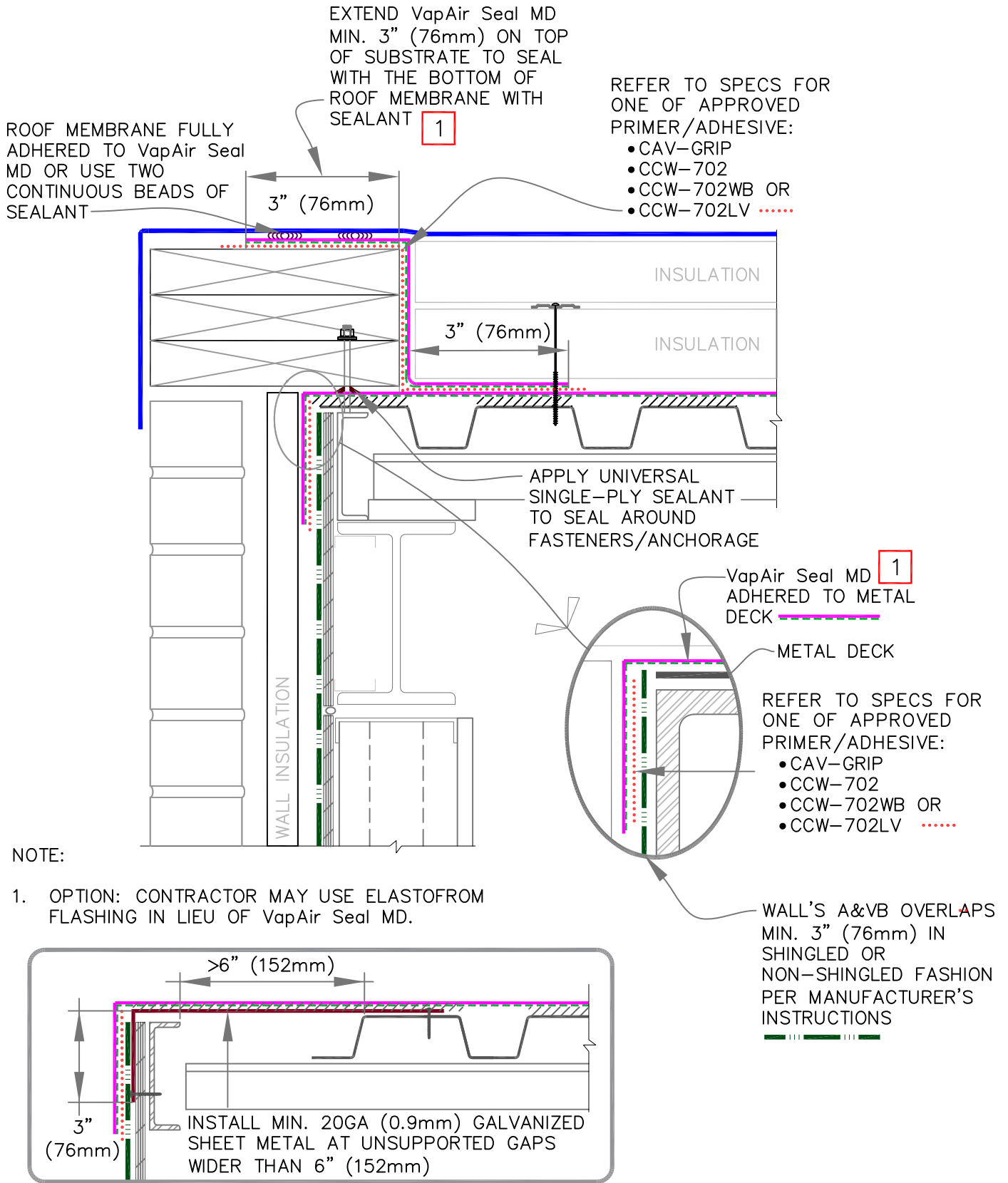
A&VB (AIR & VAPOR BARRIER) AS REQUIRED BY DESIGNER

VapAir Seal MD

DETAIL NO.

MD-1.1

ADHERED A&VB



SEE MD-0 (PAGE 1 & 2) FOR ADDITIONAL INFORMATION.

	→ VapAir Seal MD
	→ ROOF MEMBRANE
	→ CAV-GRIP, CCW-702 OR CCW-702LV
1	→ SEE NOTE

ROOF EDGE: ROOF A&VB TIE-IN TO WALL A&VB

A&VB (AIR & VAPOR BARRIER) AS REQUIRED BY DESIGNER

VapAir Seal MD

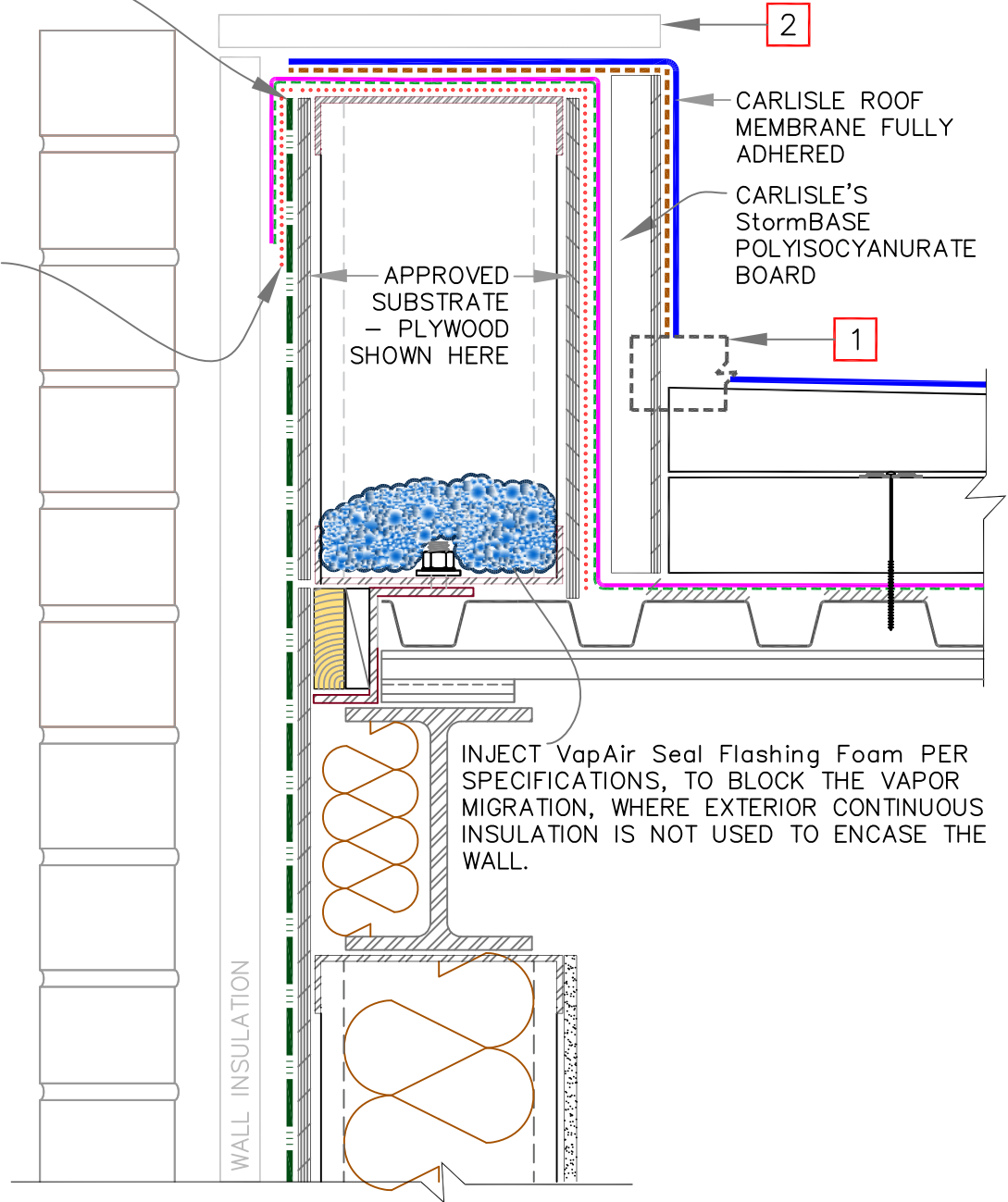
DETAIL NO.

MD-1.2

ADHERED A&VB

WALL'S A&VB OVERLAPS
MIN. 3" (75mm) IN
SHINGLED OR
NON-SHINGLED FASHION
PER MANUFACTURER'S
INSTRUCTION

REFER TO SPECS FOR
ONE OF APPROVED
PRIMER/ADHESIVE:
• CAV-GRIP
• CCW-702
• CCW-702WB OR
• CCW-702LV



NOTES:

1. REFER TO CARLISLE STANDARD DETAILS FOR ROOF BASE FLASHING
2. CARLISLE SECURSHIELD HD COMPOSITE BOARD, 100 PSI (6.9 KILOPASCAL) COMPRESSIVE STRENGTH [SUGGESTED IN ASHRAE ZONES 6-8 (ZONES B TO D IN CANADA)] OR WHERE CODE REQUIRES FOR c.i. (CONTINUOUS INSULATION).

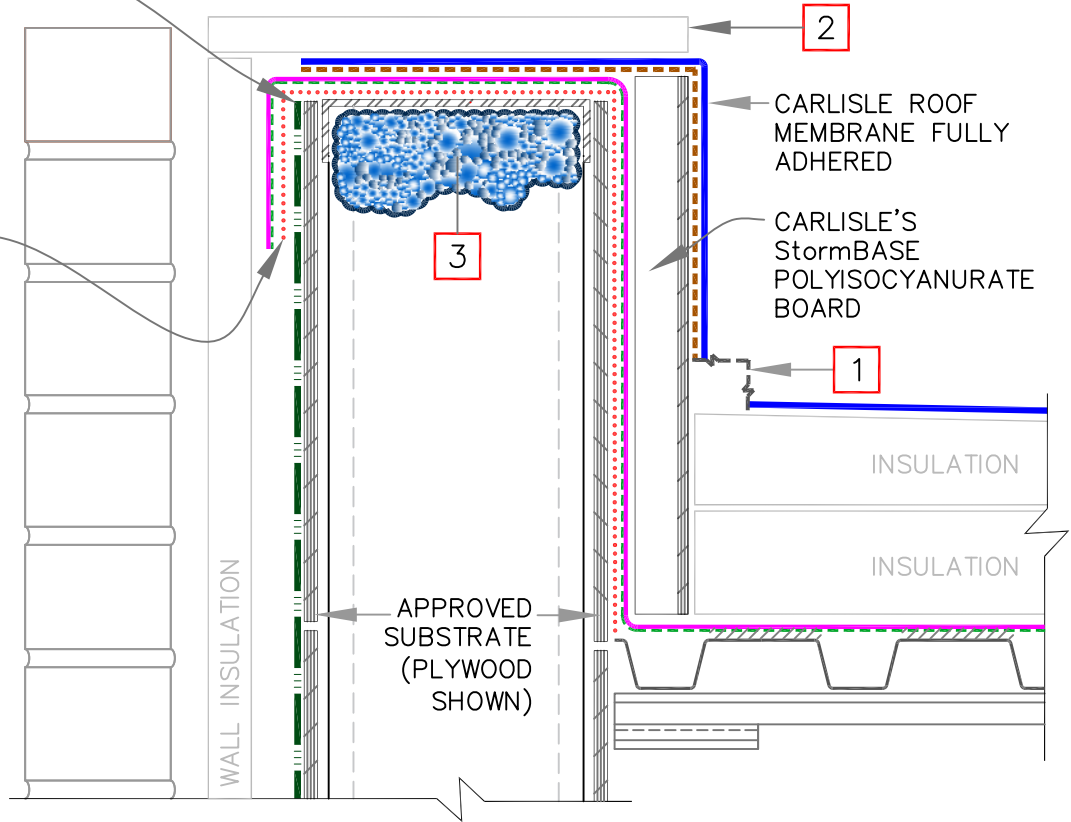
SEE MD-0 (PAGE 1 & 2) FOR
ADDITIONAL INFORMATION.

<p>→ VapAir Seal MD</p> <p>→ ROOF MEMBRANE</p> <p>→ CAV-GRIP, CCW-702 OR CCW-702LV</p> <p>→ SEE NOTE</p> <p>1</p>	<p>PARAPET ON ROOF DECK</p> <p>ROOF A&VB TIE-IN TO WALL A&VB</p> <p>A&VB (AIR & VAPOR BARRIER) AS REQUIRED BY DESIGNER</p>	<p>VapAir Seal MD</p> <p>DETAIL NO.</p> <p>MD-1.3</p> <p>ADHERED A&VB</p>
---	--	---

WALL'S A&VB OVERLAPS
MIN. 3" (75mm) IN
SHINGLED OR
NON-SHINGLED FASHION
PER MANUFACTURER'S
INSTRUCTION

REFER TO SPECS FOR
ONE OF APPROVED
PRIMER/ADHESIVE:

- CAV-GRIP
- CCW-702
- CCW-702WB OR
- CCW-702LV

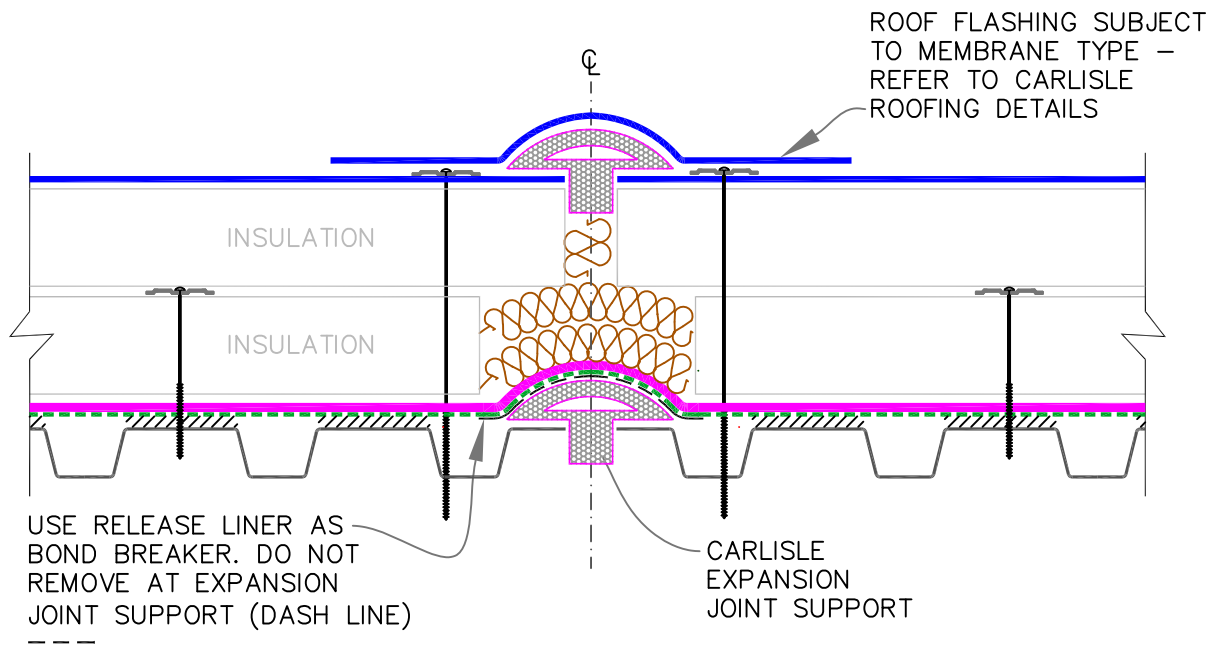


NOTES:

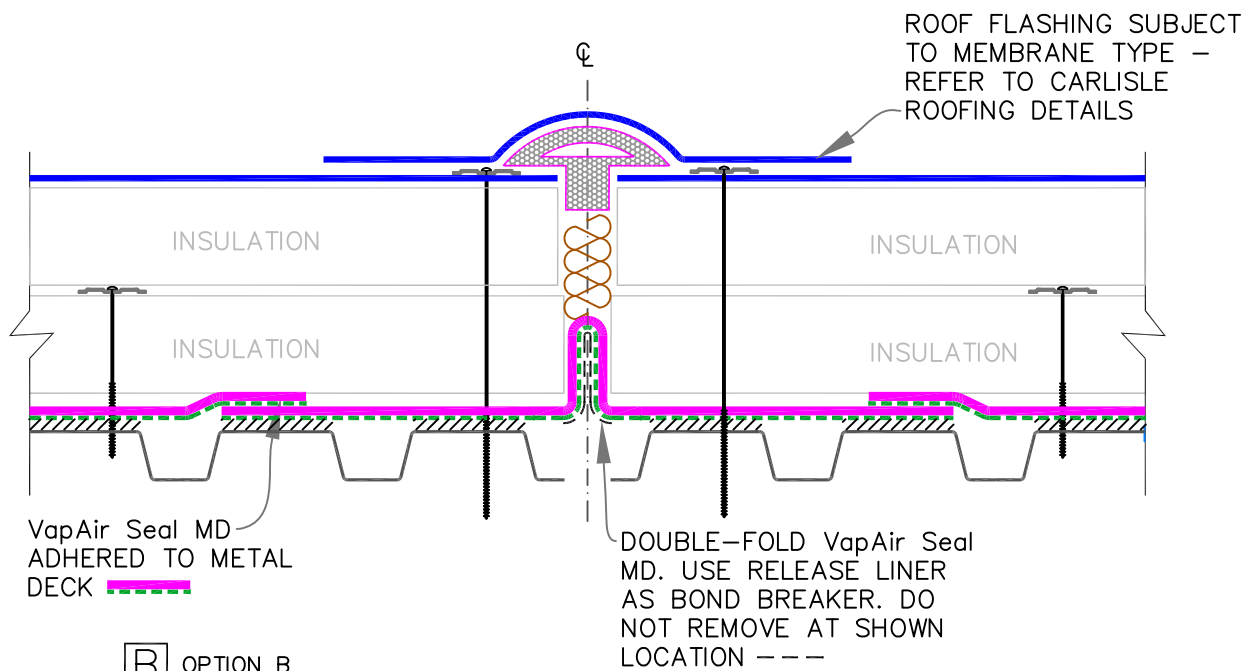
1. REFER TO CARLISLE STANDARD DETAILS FOR ROOF BASE FLASHING
2. CARLISLE SECURSHIELD HD COMPOSITE BOARD, 100 PSI (6.9 KILOPASCAL) COMPRESSIVE STRENGTH [SUGGESTED IN ASHRAE ZONES 6-8 (ZONES B TO D IN CANADA)] OR WHERE CODE REQUIRES FOR c.i. (CONTINUOUS INSULATION).
3. IN HIGH HUMIDITY SPACES, USE VapAir Seal Flashing Foam PER SPECIFICATIONS [SUGGESTED IN ASHRAE ZONES 6-8 (ZONES B-D IN CANADA)]

SEE MD-0 (PAGE 1 & 2) FOR
ADDITIONAL INFORMATION.

<p>→ VapAir Seal MD</p> <p>→ ROOF MEMBRANE</p> <p>→ CAV-GRIP, CCW-702 OR CCW-702LV</p> <p>→ SEE NOTE</p> <p>1</p>	<p>PARAPET (CONTINUOUS WALL)</p> <p>ROOF A&VB TIE-IN TO WALL A&VB</p> <p>A&VB (AIR & VAPOR BARRIER) AS REQUIRED BY DESIGNER</p>	<p>VapAir Seal MD</p> <p>DETAIL NO.</p> <p>MD-1.4</p> <p>ADHERED A&VB</p>
---	---	---



A OPTION A



B OPTION B

SEE [MD-0 \(PAGE 1 & 2\)](#) FOR ADDITIONAL INFORMATION.

	→ VapAir Seal MD
	→ ROOF MEMBRANE
	→ CAV-GRIP, CCW-702 OR CCW-702LV
	→ SEE NOTE

1

ROOF EXPANSION JOINT
(ROOF-TO-ROOF JOINT)

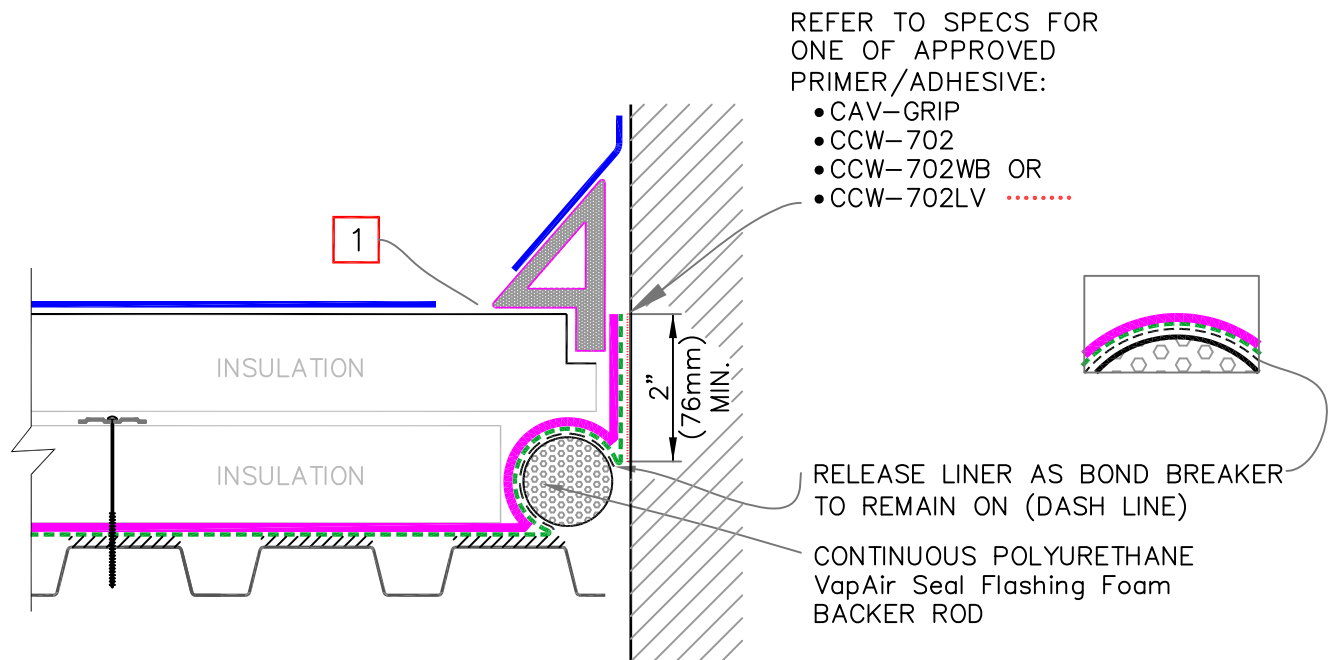
A&VB (AIR & VAPOR BARRIER) AS REQUIRED BY DESIGNER

VapAir Seal MD

DETAIL NO.

MD-3.1

ADHERED A&VB



NOTE:

1. REFER TO TYPICAL EXPANSION JOINT DETAIL FOR SELECTED ROOF ASSEMBLY TYPE

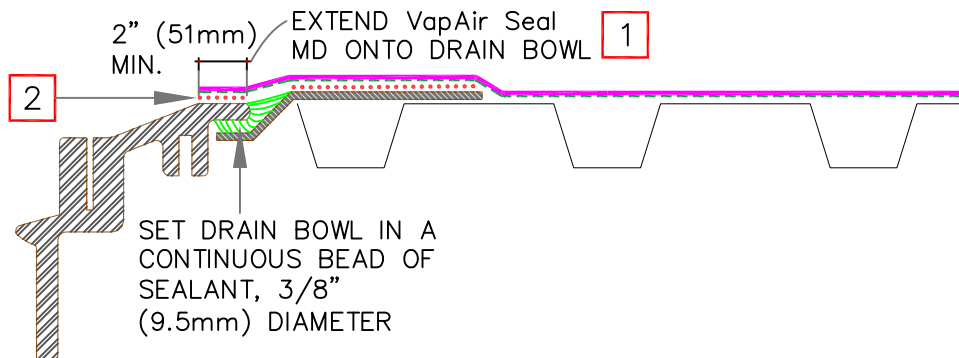
B OPTION B

SEE MD-0 (PAGE 1 & 2) FOR ADDITIONAL INFORMATION.

<p>→ VapAir Seal MD</p> <p>→ ROOF MEMBRANE</p> <p>→ CAV-GRIP, CCW-702 OR CCW-702LV</p> <p>→ SEE NOTE</p> <p>1</p>	<p>ROOF EXPANSION JOINT (ROOF-TO-WALL JOINT)</p> <p>A&VB (AIR & VAPOR BARRIER) AS REQUIRED BY DESIGNER</p>	<p>VapAir Seal MD</p> <p>DETAIL NO.</p> <p>MD-3.2</p> <p>ADHERED A&VB</p>
---	--	---

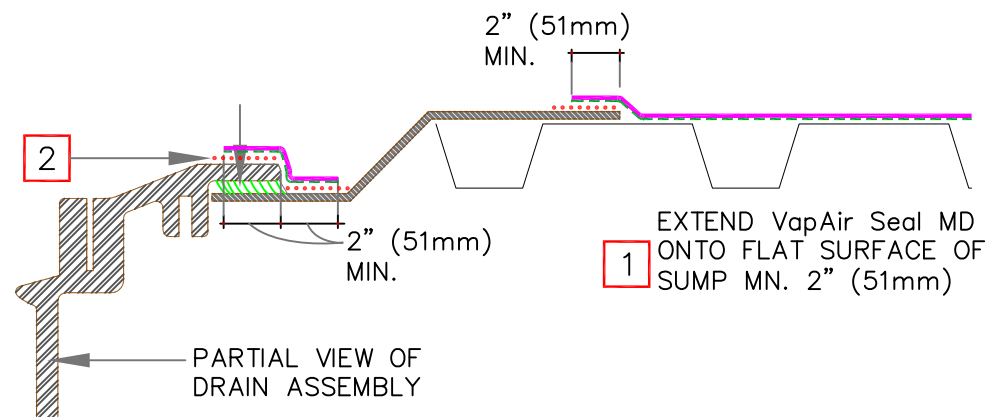
LOW PROFILE SUMP

A



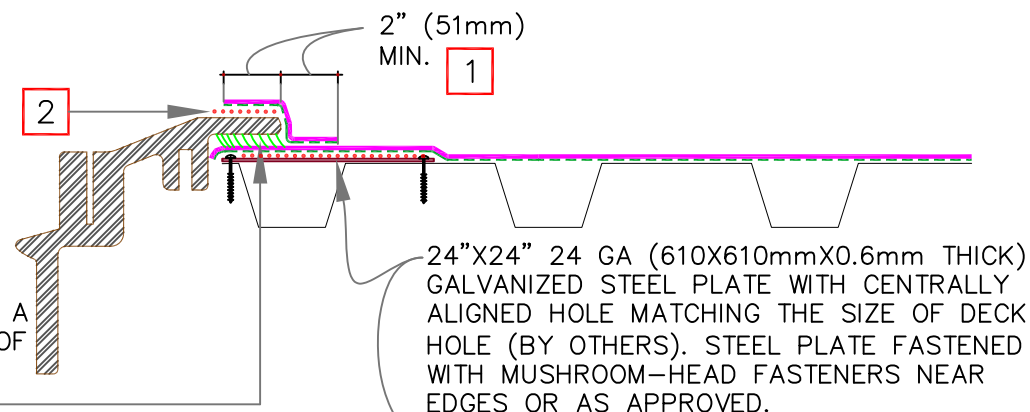
DEEP PROFILE SUMP

B



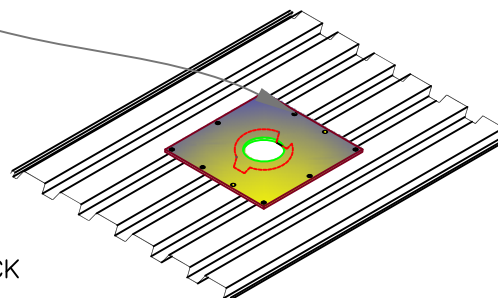
NO DRAIN SUMP

C



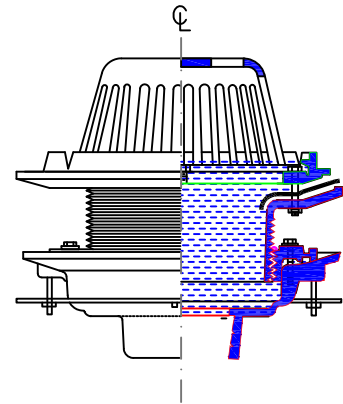
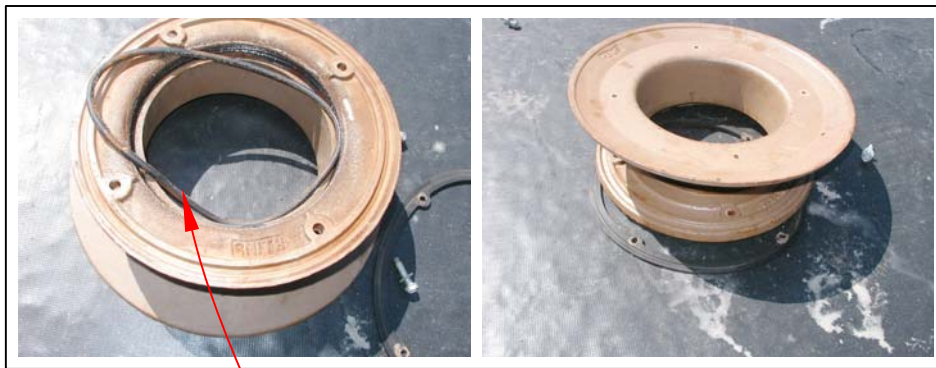
NOTES

1. HAND ROLL WITH 2" (51mm) WIDE PRESSURE-ROLLER & ENSURE ANY FISH-MOUTHS ARE SEALED WITH SEALANT.
2. USE PRIMER IF SURFACES ARE RUSTY/UNCLEAN/POOR ADHESION IS EXPERIENCED. VapAir Seal MD ADHERED TO METAL DECK AND STEEL PLATE.
3. CAREFULLY CUT HOLE IN VapAir Seal MD ALIGNED TO DECK HOLE.
4. ENSURE HOLES ARE OPEN BEFORE THE END OF THE DAY OR PRIOR TO RAIN.



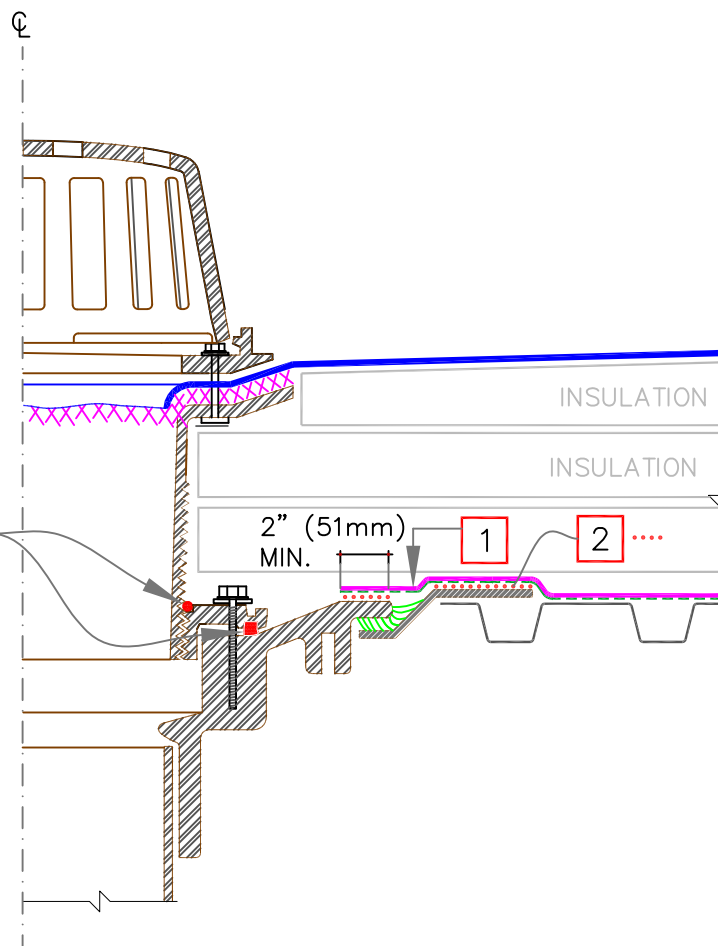
SEE MD-0 (PAGE 1 & 2) FOR ADDITIONAL INFORMATION.

<p>→ VapAir Seal MD</p> <p>→ ROOF MEMBRANE</p> <p>→ CAV-GRIP, CCW-702 OR CCW-702LV</p> <p>→ SEE NOTE</p> <p>1</p>	<p>ROOF DRAIN WITH VARYING SUMP CONDITIONS</p> <p>A&VB (AIR & VAPOR BARRIER) AS REQUIRED BY DESIGNER</p>	<p>VapAir Seal MD</p> <p>DETAIL NO.</p> <p>MD-6.1</p> <p>ADHERED A&VB</p>
---	--	---



EXAMPLE OF ADJUSTABLE DRAIN – TYPE A





PLUMBER TO ENSURE THAT GASKETS BETWEEN REVERSIBLE COLLAR AND DRAIN BOWL ARE 100% AIR AND WATER TIGHT & FLOOD TESTED.



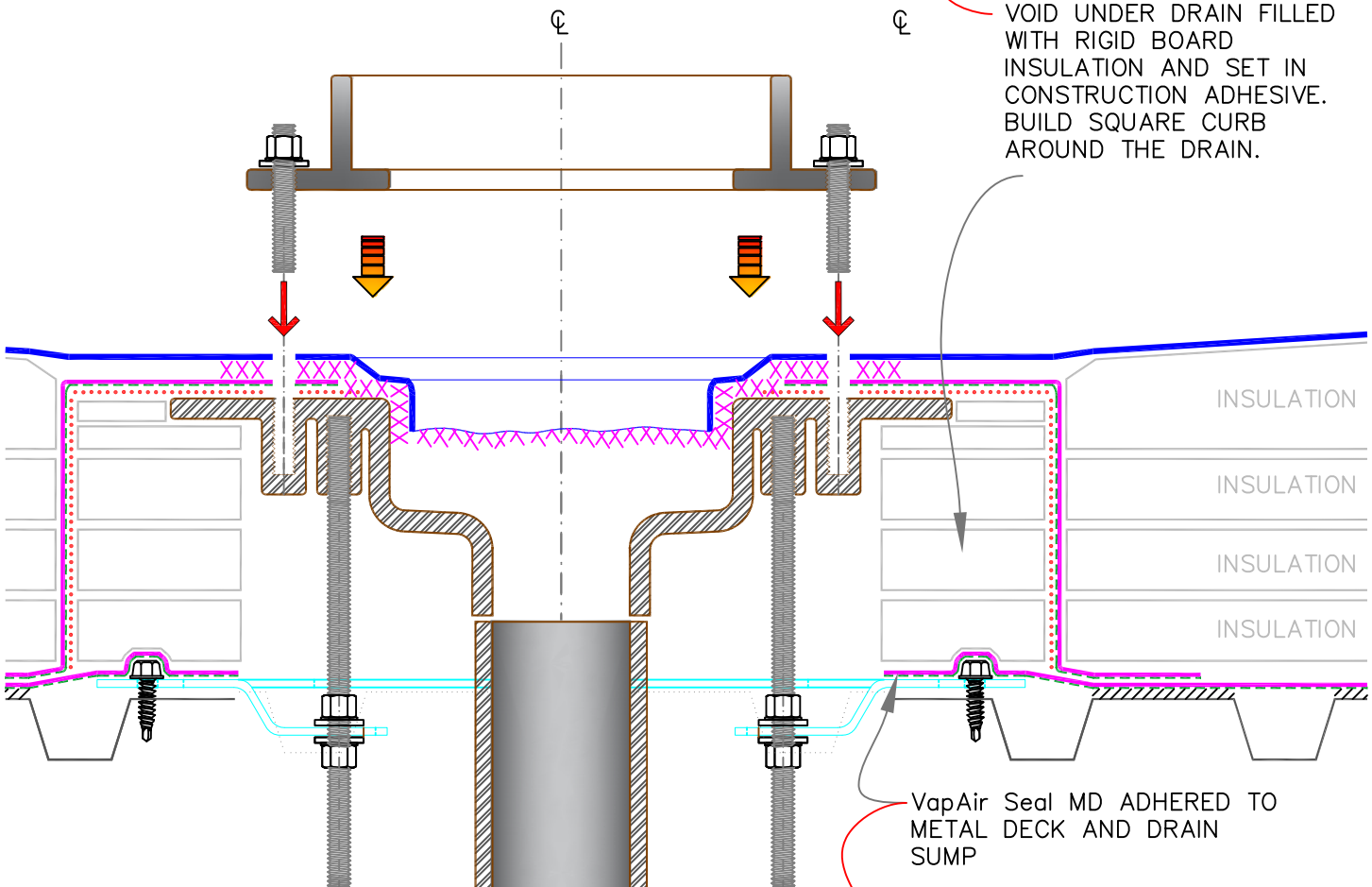
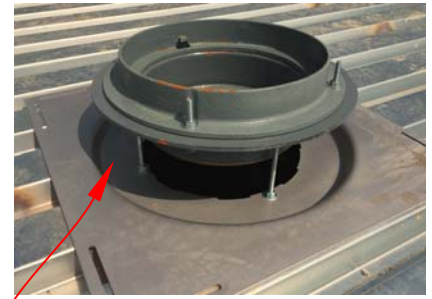
NOTES

1. EXTEND VapAir Seal MD ONTO DRAIN'S FLAT AREA AND HAND ROLL WITH 2" (51mm) WIDE PRESSURE-ROLLER & ENSURE ANY FISH-MOUTHS ARE SEALED WITH SEALANT
2. USE PRIMER IF SURFACES ARE RUSTY/UNCLEAN/POOR ADHESION IS EXPERIENCED.

SEE [MD-0 \(PAGE 1 & 2\)](#) FOR ADDITIONAL INFORMATION.

<p>  → VapAir Seal MD  → ROOF MEMBRANE  → CAV-GRIP, CCW-702 OR CCW-702LV  → SEE NOTE </p>	<p>ROOF DRAIN WITH ADJUSTABLE HEIGHT – TYPE A</p> <p>A&VB (AIR & VAPOR BARRIER) AS REQUIRED BY DESIGNER</p>	<p>VapAir Seal MD</p> <p>DETAIL NO.</p> <p>MD-6.2</p> <p>ADHERED A&VB</p>
--	---	---

EXAMPLE OF ADJUSTABLE DRAIN — TYPE B

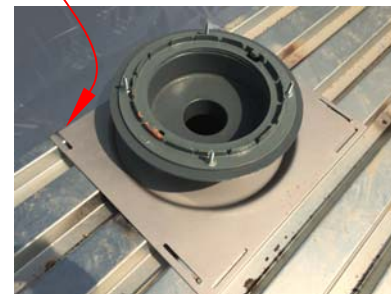


VOID UNDER DRAIN FILLED WITH RIGID BOARD INSULATION AND SET IN CONSTRUCTION ADHESIVE. BUILD SQUARE CURB AROUND THE DRAIN.





VapAir Seal MD ADHERED TO METAL DECK AND DRAIN SUMP

NOTES

1. HAND ROLL WITH 2" (51mm) WIDE PRESSURE-ROLLER & ENSURE ANY FISH-MOUTHS ARE SEALED WITH SEALANT
2. USE PRIMER IF SURFACES ARE RUSTY/UNCLEAN/POOR ADHESION IS EXPERIENCED.
3. DESIGNER MAY ADD DRAIN INSULATION FROM INSIDE ALSO.

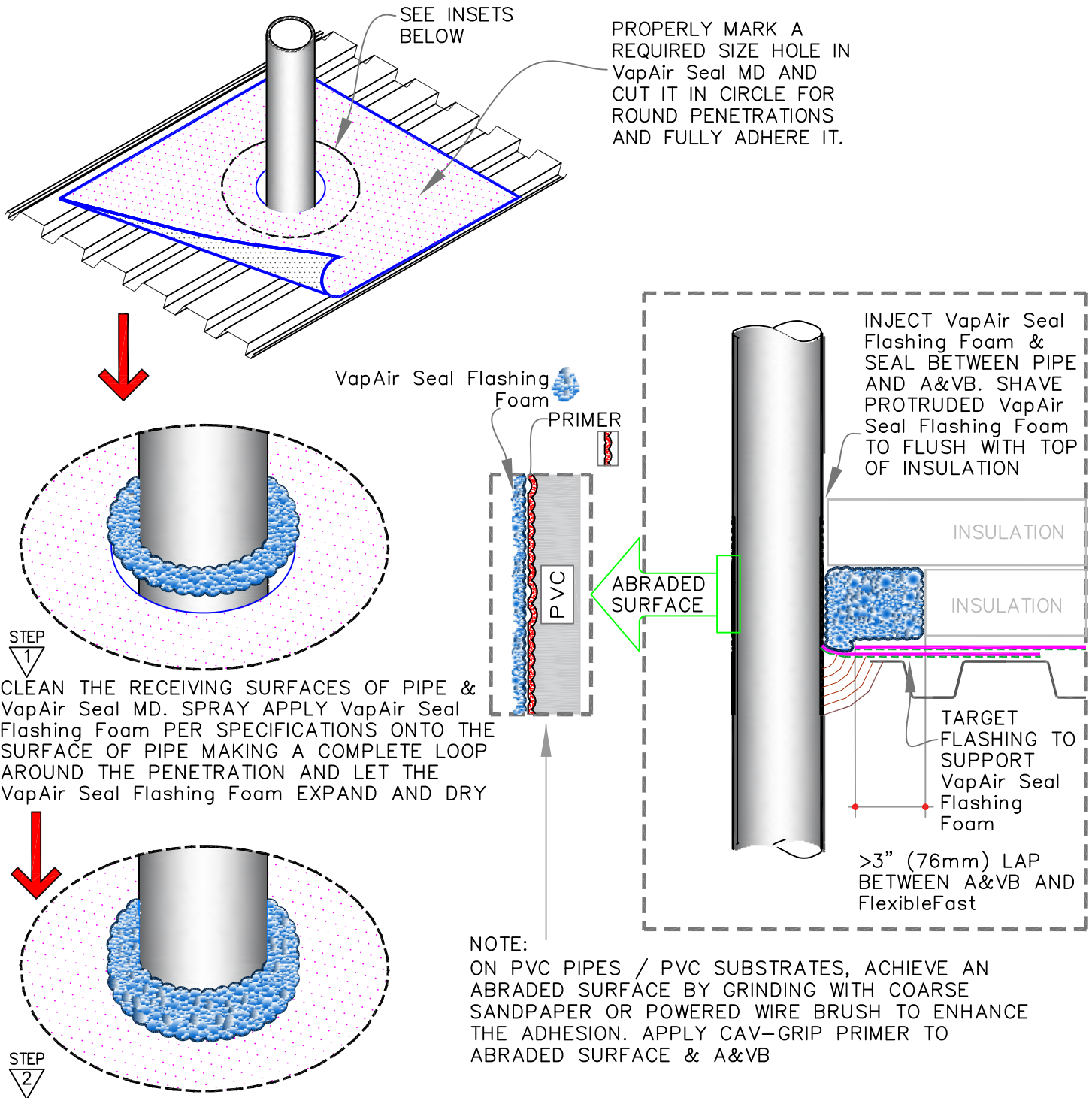


SEE [MD-0 \(PAGE 1 & 2\)](#) FOR ADDITIONAL INFORMATION.

<p>  → VapAir Seal MD  → ROOF MEMBRANE  → CAV-GRIP, CCW-702 OR CCW-702LV  → SEE NOTE </p>	<p>ROOF DRAIN WITH ADJUSTABLE HEIGHT — TYPE B</p> <p>A&VB (AIR & VAPOR BARRIER) AS REQUIRED BY DESIGNER</p>	<p>VapAir Seal MD</p> <p>DETAIL NO.</p> <p>MD-6.3</p> <p>ADHERED A&VB</p>
--	---	---

AIR & VAPOR CONTROL LAYERS

NOTE: REFER TO [DETAIL MD-8.3](#), WHERE MULTIPLE PENETRATIONS EXIST IN ONE AREA



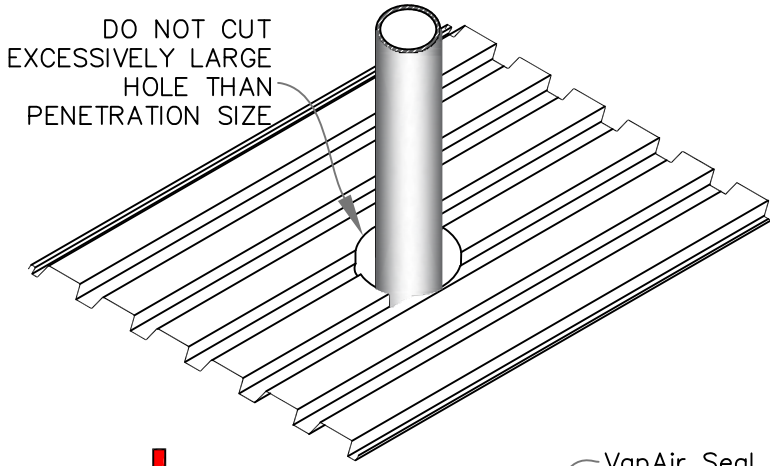
SEE [MD-0 \(PAGE 1 & 2\)](#) FOR ADDITIONAL INFORMATION.

<p> → VapAir Seal MD → ROOF MEMBRANE → CAV-GRIP, CCW-702 OR CCW-702LV → SEE NOTE </p>	<p>PIPE SEALED WITH VapAir Seal Flashing Foam PER SPECIFICATIONS</p> <p>A&VB (AIR & VAPOR BARRIER) AS REQUIRED BY DESIGNER</p>	<p>VapAir Seal MD</p> <p>DETAIL NO.</p> <p>MD-8.1</p> <p>ADHERED A&VB</p>
--	--	---

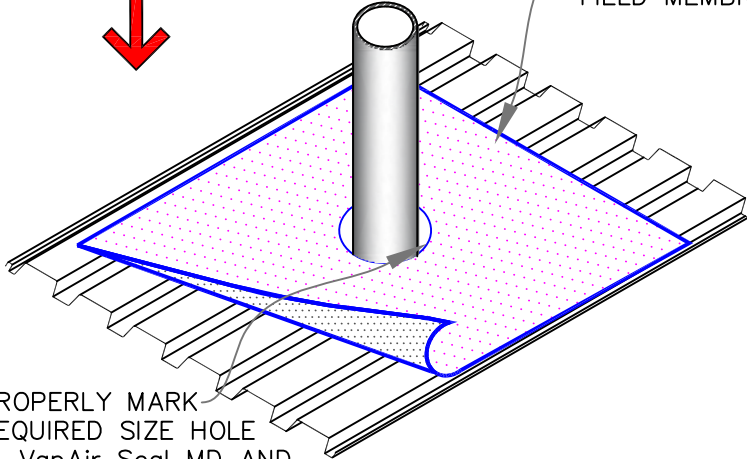
AIR & VAPOR CONTROL LAYERS

NOTE: REFER TO [DETAIL MD-8.3](#), WHERE MULTIPLE PENETRATIONS EXIST IN ONE AREA

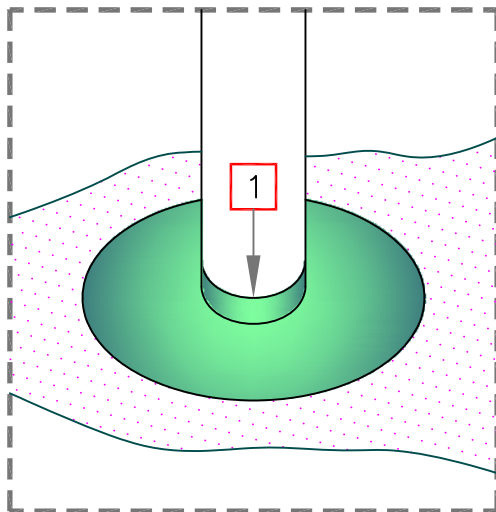
DO NOT CUT
EXCESSIVELY LARGE
HOLE THAN
PENETRATION SIZE



VapAir Seal MD
FIELD MEMBRANE

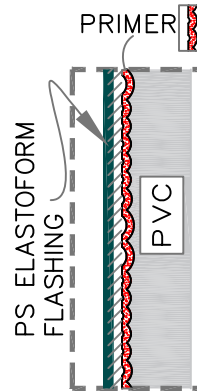
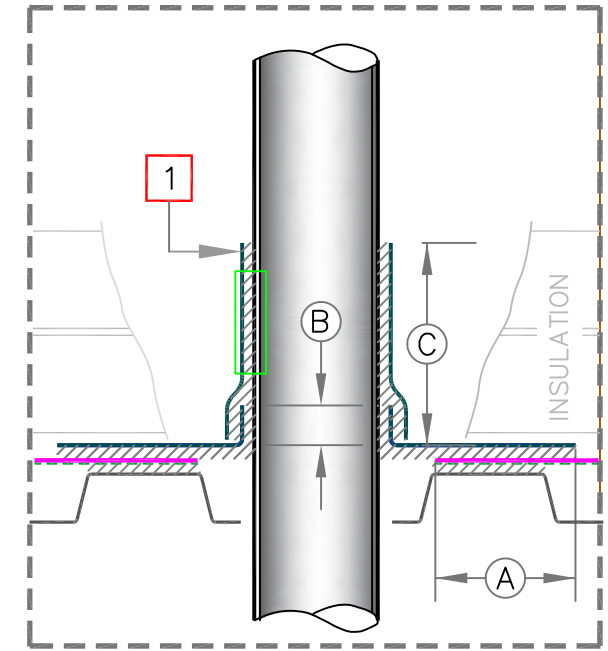
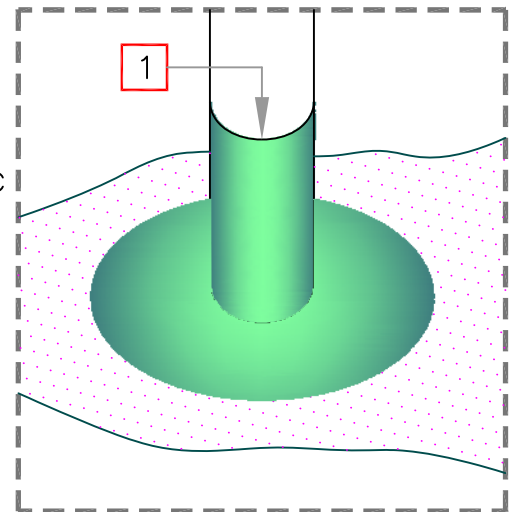


PROPERLY MARK
REQUIRED SIZE HOLE
IN VapAir Seal MD AND
CUT A HOLE CLOSER
TO THE PENETRATION.
FOR ROUND
PENETRATIONS CUT A
CIRCULAR HOLE



1 PRESSURE-SENSITIVE
ELASTOFORM FLASHING
IN CONJUNCTION WITH
EPDM PRIMER.

NOTE: ON PVC PIPES / PVC
SUBSTRATES, ACHIEVE AN
ABRADED SURFACE BY
GRINDING WITH COARSE
SANDPAPER OR POWERED
WIRE BRUSH TO ENHANCE
THE ADHESION. APPLY
CAV-GRIP PRIMER TO
ABRADED SURFACE & A&VB



DIMENSIONS		mm	
(A)	3"	76	MIN.
(B)	1/2"	13	MIN.
(C)	MIN. 3" (76mm) OR MAX. BELOW THE HEIGHT OF INSULATION		

SEE [MD-0 \(PAGE 1 & 2\)](#) FOR
ADDITIONAL INFORMATION.

	→ VapAir Seal MD
	→ ROOF MEMBRANE
	→ CAV-GRIP, CCW-702 OR CCW-702LV
1	→ SEE NOTE

PIPE
PRESSURE-SENSITIVE ELASTOFORM
EPDM FLASHINGS

A&VB (AIR & VAPOR BARRIER) AS REQUIRED BY DESIGNER

VapAir Seal MD

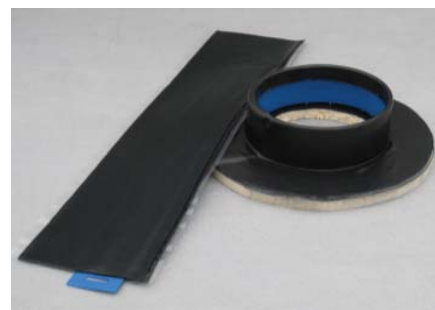
DETAIL NO.

MD-8.2

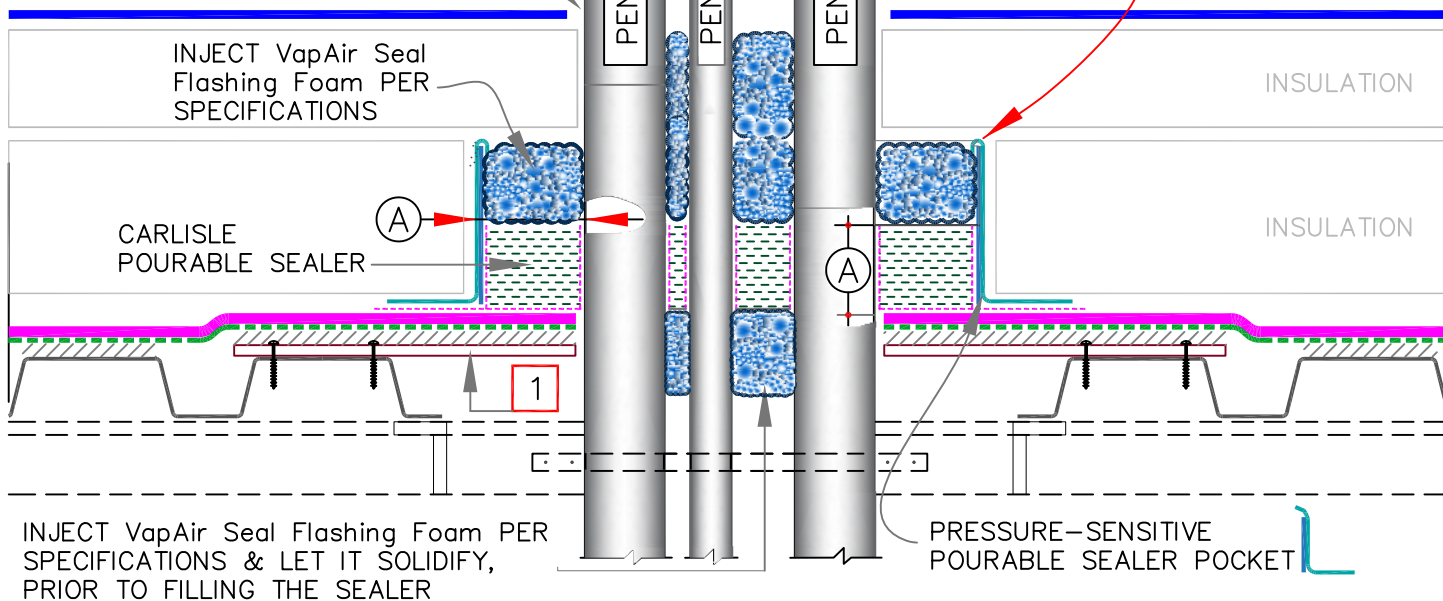
ADHERED A&VB

AIR & VAPOR CONTROL LAYERS

DIMENSIONS	mm	
(A)	1/2"	13 TO
	1"	25

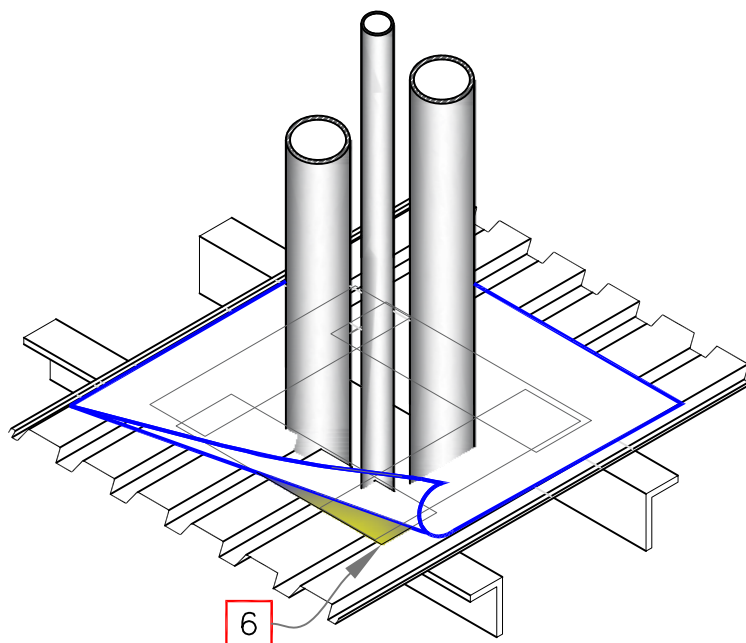


REFER TO CARLISLE UNIVERSAL DETAILS [U-16](#) SERIES FOR APPLICABLE ROOF MEMBRANE SYSTEM







NOTES:

1. THE MAXIMUM ALLOWABLE SURFACE TEMPERATURE OF THE PENETRATION SHALL NOT EXCEED 180° F (82° C).
2. PENETRATIONS, AIR & VAPOR BARRIER, FLASHING AND METAL (INSIDE POCKET) MUST BE PRIMED WITH EPDM PRIMER PRIOR TO APPLYING POURABLE SEALER. DO NOT PRIME THE BLUE PLASTIC SUPPORT STRIP.
3. POURABLE SEALER MUST CONTACT PRIMED PRESSURE-SENSITIVE ELASTOFORM FLASHING AND AIR & VAPOR BARRIER.
4. SECUREMENT IS REQUIRED FOR POURABLE SEALER POCKETS WHICH ARE GREATER THAN 18" (457mm) IN DIAMETER. REFER TO SPECIFICATIONS.
5. PIPE CLUSTERS MUST HAVE MINIMUM 1" (25mm) CLEARANCE BETWEEN PENETRATIONS.
6. 22 GAUGE STEEL STRIPS TO FILL GAPS & SUPPORT THE SEALER POCKET. FASTEN INTO DECK

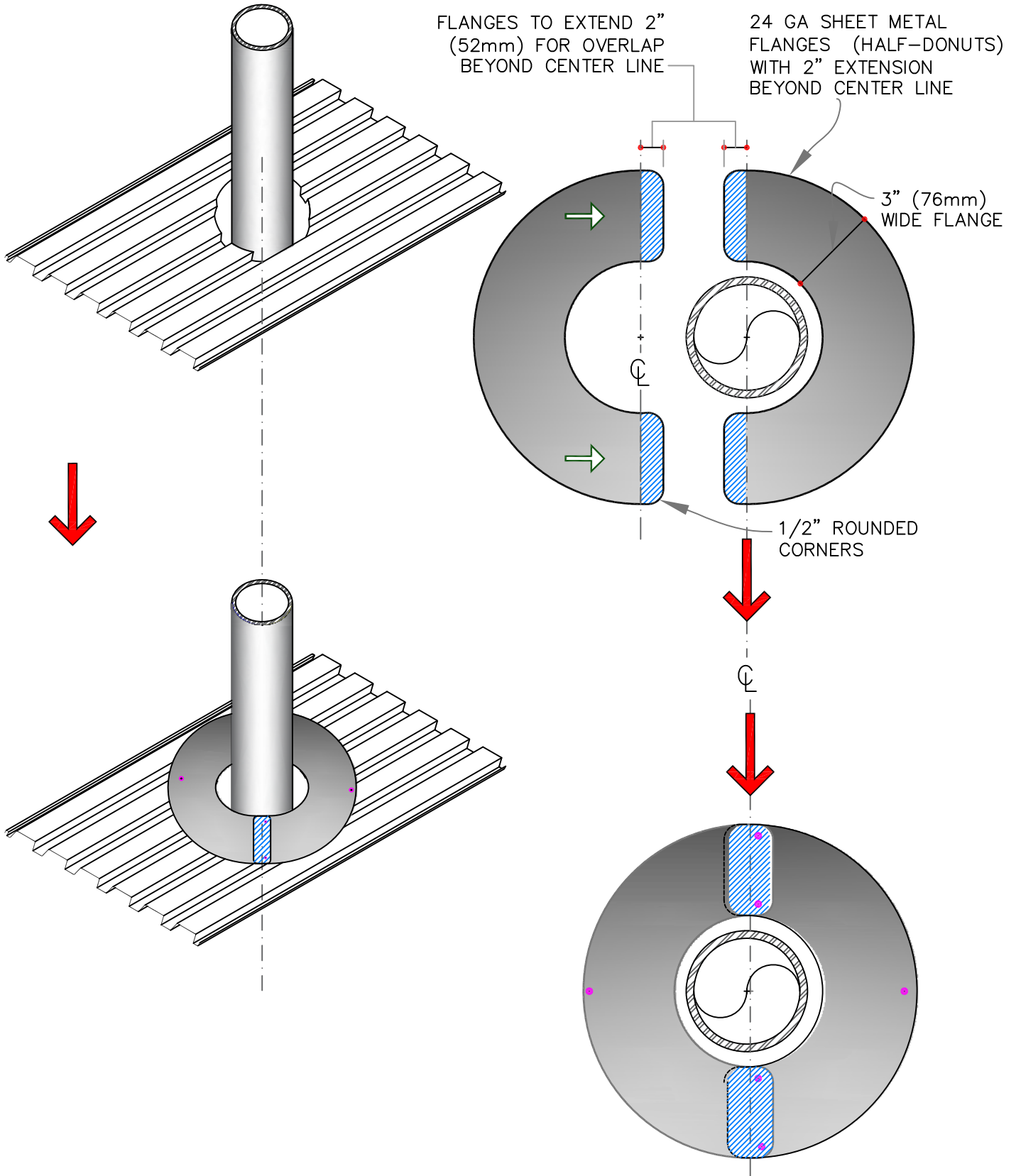


SEE [MD-0 \(PAGE 1 & 2\)](#) FOR ADDITIONAL INFORMATION.




 → VapAir Seal MD  → ROOF MEMBRANE  → CAV-GRIP, CCW-702 OR CCW-702LV  → SEE NOTE 1	<p>MULTIPLE PENETRATIONS' FLASHINGS IN GROUP</p> <p>A&VB (AIR & VAPOR BARRIER) AS REQUIRED BY DESIGNER</p>	<p>VapAir Seal MD</p> <p>DETAIL NO.</p> <p>MD-8.3</p> <p>ADHERED A&VB</p>
---	--	---

AIR & VAPOR CONTROL LAYERS

NOTE: REFER TO [DETAIL MD-8.3](#), WHERE MULTIPLE PENETRATIONS EXIST IN ONE AREA

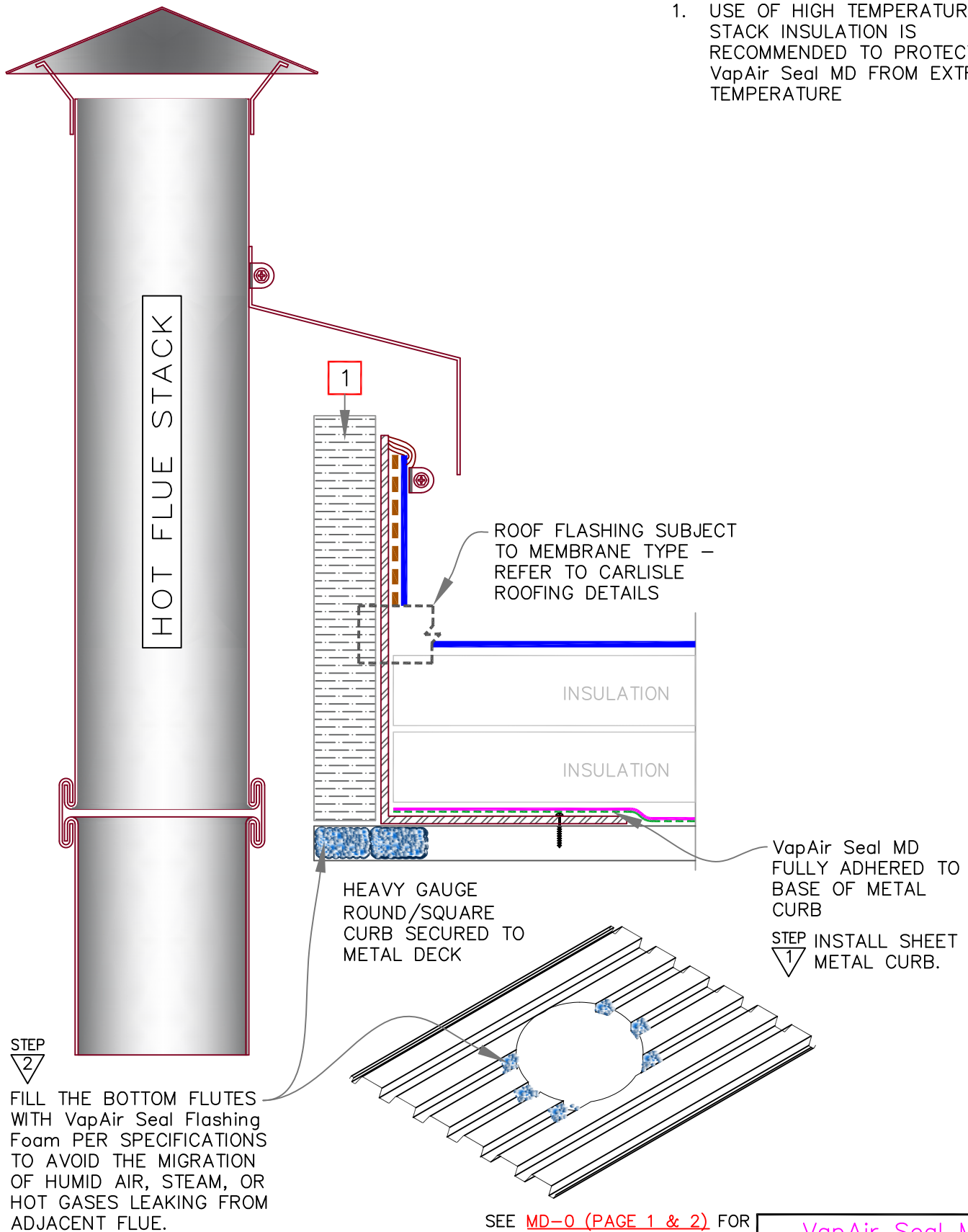


SEE [MD-0 \(PAGE 1 & 2\)](#) FOR ADDITIONAL INFORMATION.

<p>  → VapAir Seal MD  → ROOF MEMBRANE CAV-GRIP, CCW-702 OR CCW-702LV  → SEE NOTE </p>	<p>PIPE SHEET METAL FLANGES TO SUPPORT FLASHING</p> <p>A&VB (AIR & VAPOR BARRIER) AS REQUIRED BY DESIGNER</p>	<p>VapAir Seal MD</p> <p>DETAIL NO.</p> <p>MD-8.4</p> <p>ADHERED A&VB</p>
---	---	---

NOTE

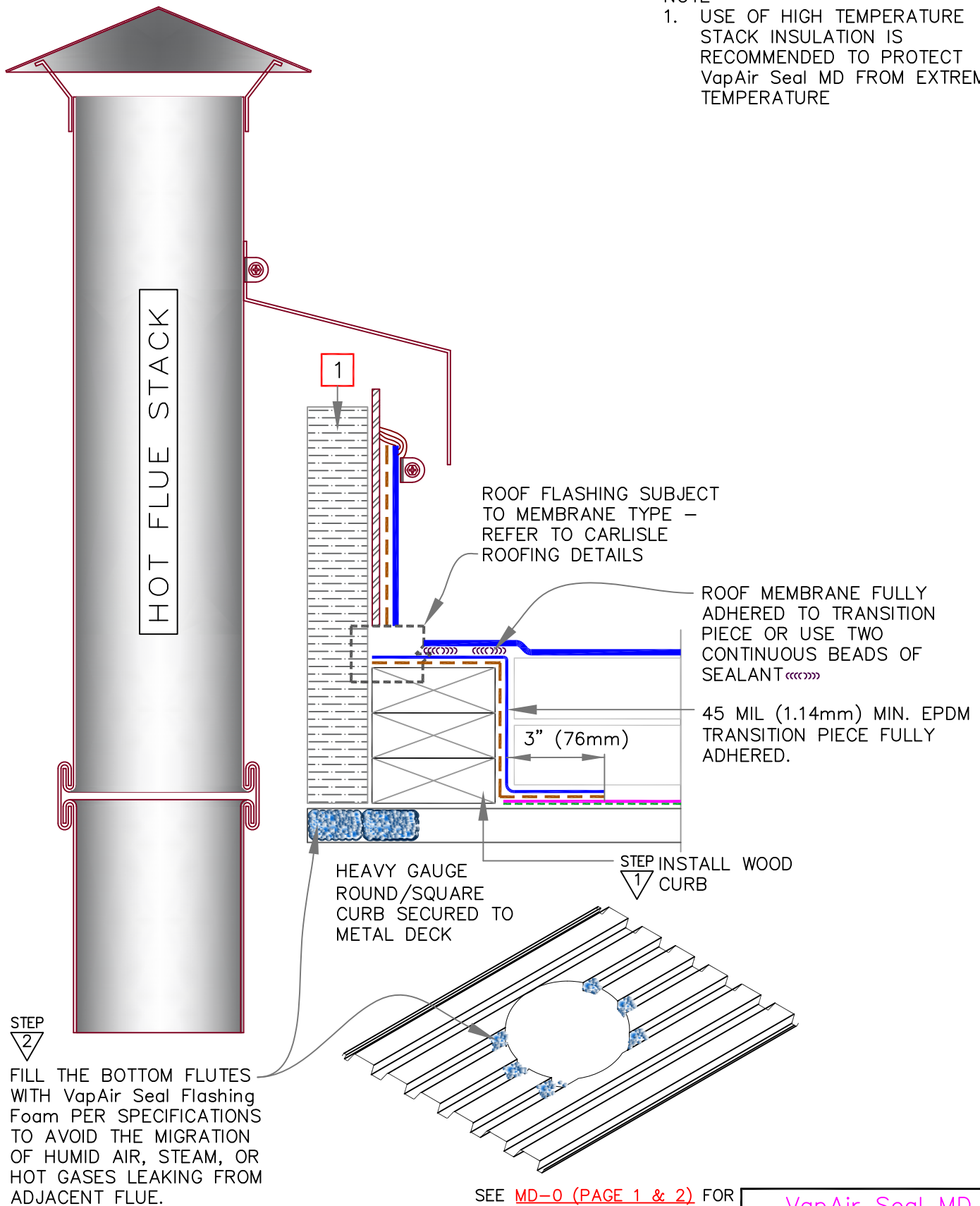
1. USE OF HIGH TEMPERATURE STACK INSULATION IS RECOMMENDED TO PROTECT VapAir Seal MD FROM EXTREME TEMPERATURE



<p>→ VapAir Seal MD</p> <p>→ ROOF MEMBRANE</p> <p>→ CAV-GRIP, CCW-702 OR CCW-702LV</p> <p>→ SEE NOTE</p>	<p>HOT VENT STACK WITH METAL CURB AT DECK</p> <p>A&VB (AIR & VAPOR BARRIER) AS REQUIRED BY DESIGNER</p>	<p>VapAir Seal MD</p> <p>DETAIL NO.</p> <p>MD-8.6A</p> <p>ADHERED A&VB</p>
--	---	--

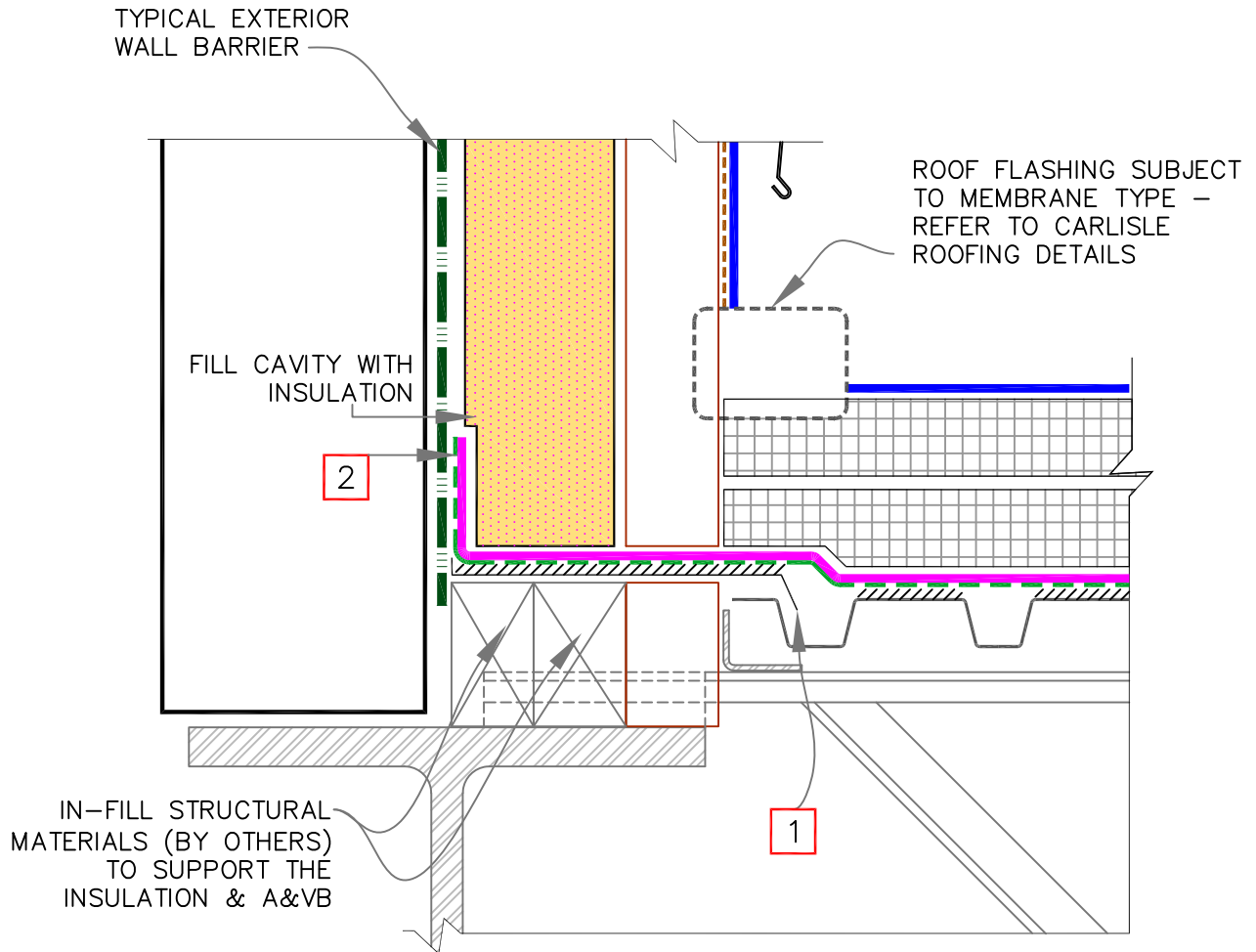
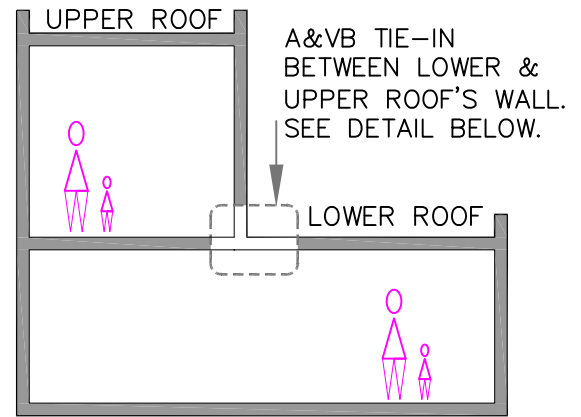
NOTE

1. USE OF HIGH TEMPERATURE STACK INSULATION IS RECOMMENDED TO PROTECT VapAir Seal MD FROM EXTREME TEMPERATURE



SEE MD-0 (PAGE 1 & 2) FOR ADDITIONAL INFORMATION.

<p>→ VapAir Seal MD</p> <p>→ ROOF MEMBRANE</p> <p>→ CAV-GRIP, CCW-702 OR CCW-702LV</p> <p>→ SEE NOTE</p>	<p>HOT VENT STACK WITH WOOD CURB</p> <p>A&VB (AIR & VAPOR BARRIER) AS REQUIRED BY DESIGNER</p>	<p>VapAir Seal MD</p> <p>DETAIL NO.</p> <p>MD-8.6B</p> <p>ADHERED A&VB</p>
--	--	--



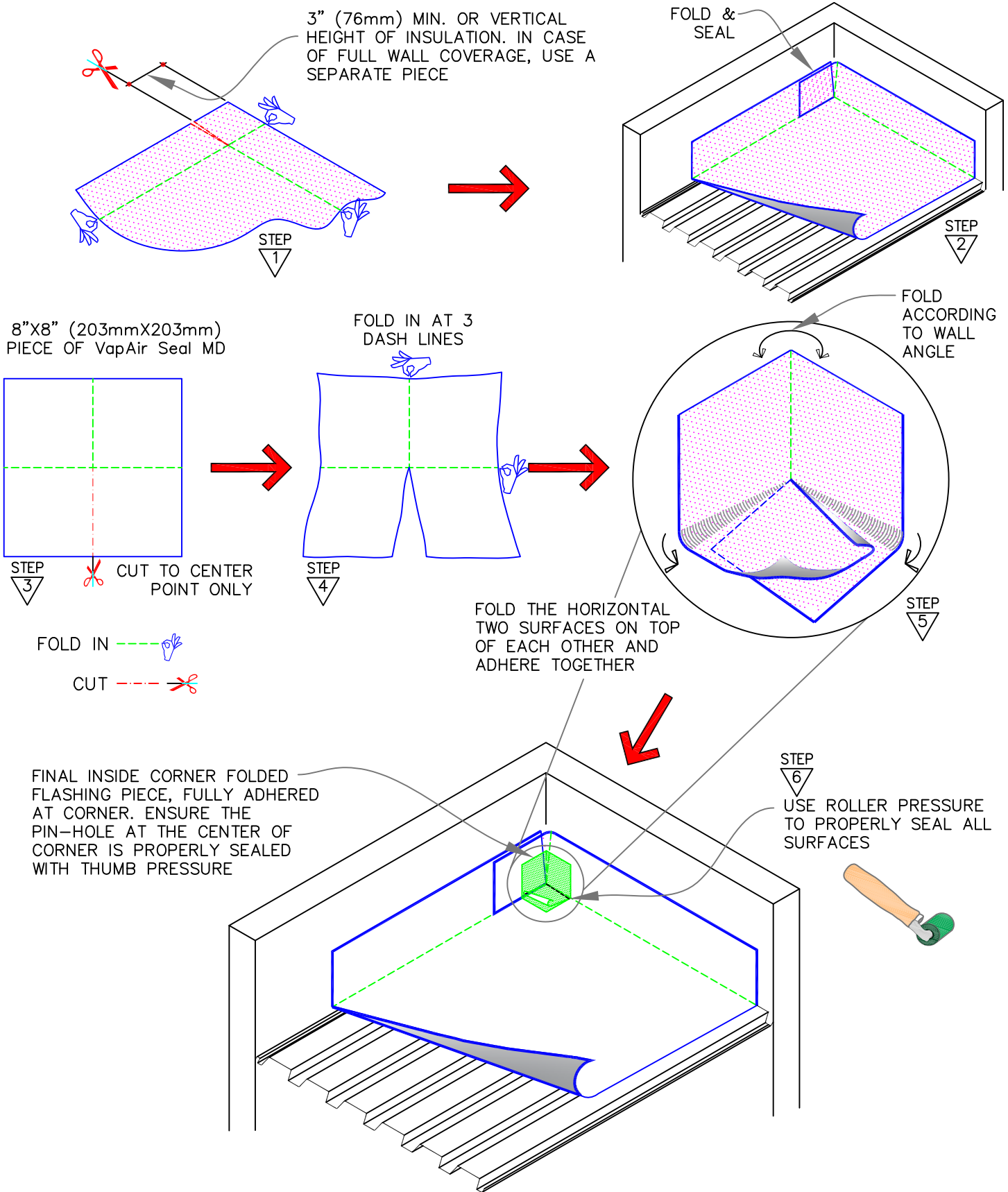
NOTES:

1. SET THRU-WALL STAINLESS STEEL STRIP FLASHING AND EXTEND IT OUT MIN. 3" (76mm) (BY OTHERS).
2. EXTEND VapAir Seal MD MIN. 6" (152mm) VERTICAL AND FULLY ADHERE TO WALL'S A&VB. WHEN WALL'S A&VB IS NOT INSTALLED YET, THEN ADHERE TO WALL. WALL BARRIER SHALL BE FULLY ADHERED TO VapAir Seal MD

SEE [MD-0 \(PAGE 1 & 2\)](#) FOR ADDITIONAL INFORMATION.

<p>→ VapAir Seal MD</p> <p>→ ROOF MEMBRANE</p> <p>→ CAV-GRIP, CCW-702 OR CCW-702LV</p> <p>→ SEE NOTE</p> <p>1</p>	<p>TIE-IN TO UPPER STOREY WALL</p> <p>A&VB (AIR & VAPOR BARRIER) AS REQUIRED BY DESIGNER</p>	<p>VapAir Seal MD</p> <p>DETAIL NO.</p> <p>MD-12.1</p> <p>ADHERED A&VB</p>
---	--	--

AIR & VAPOR CONTROL LAYERS

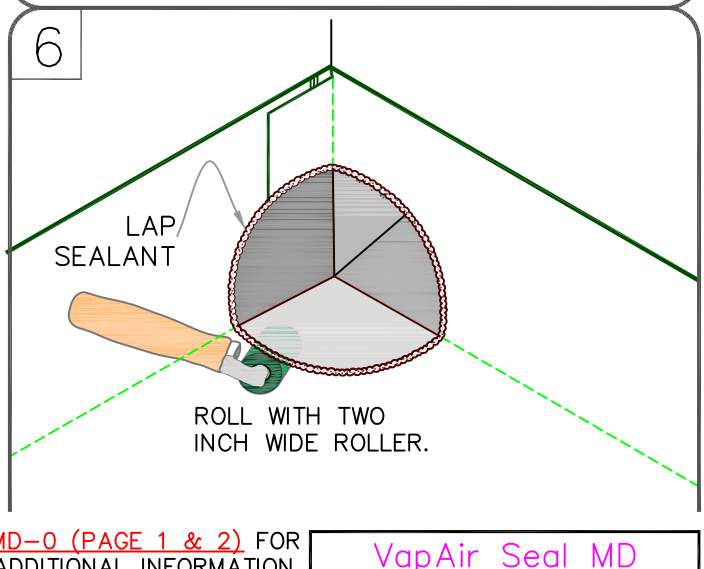
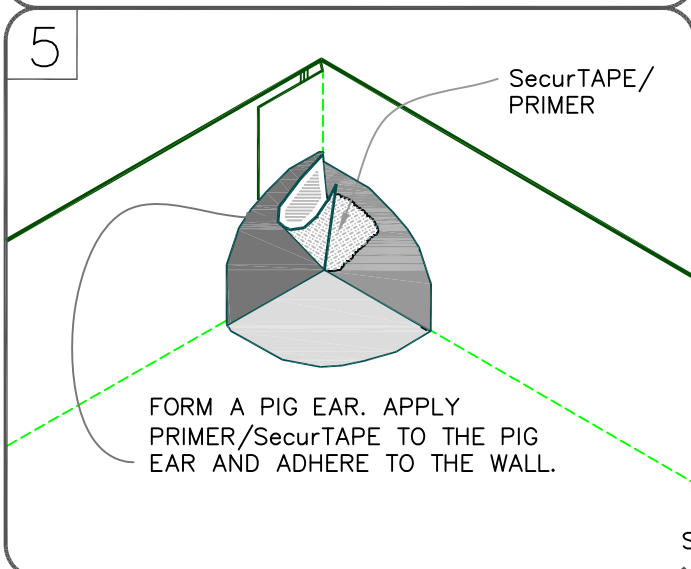
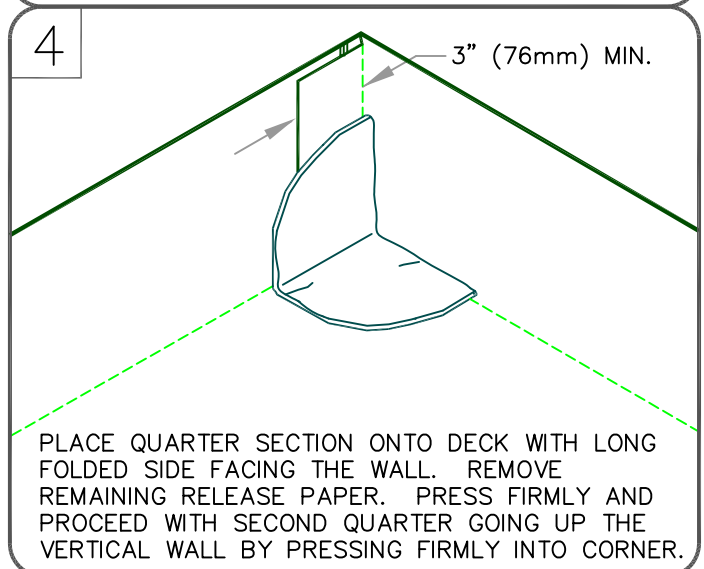
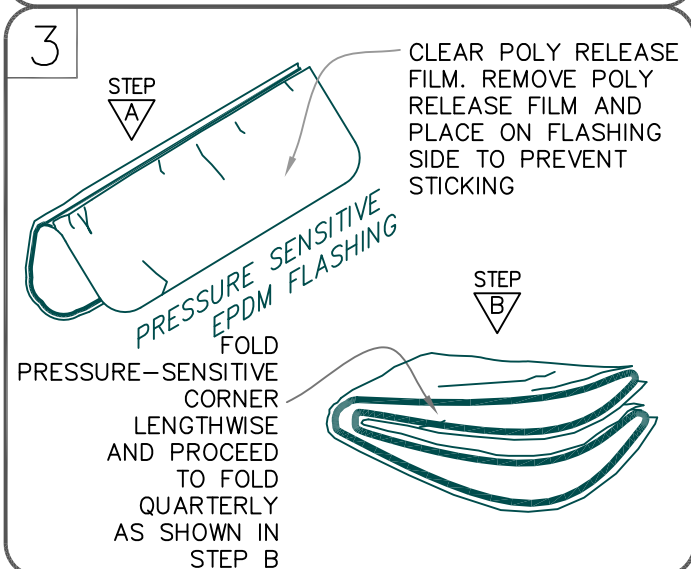
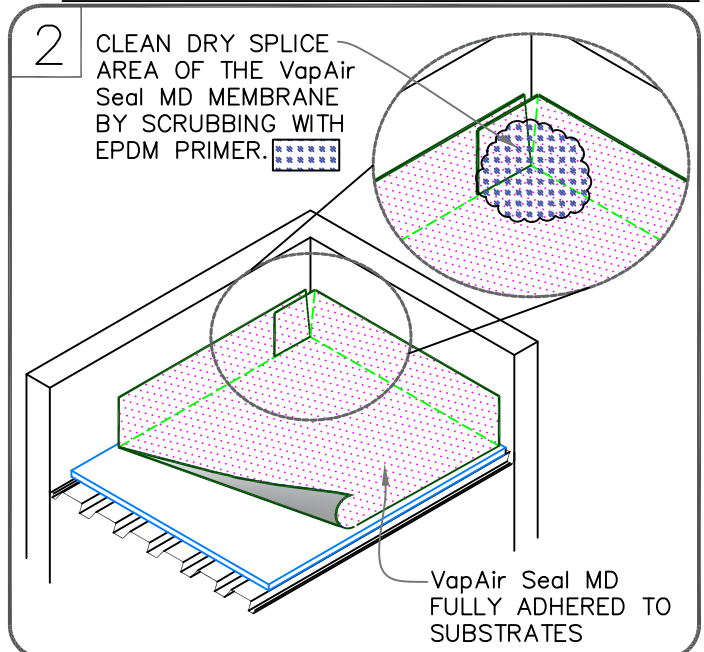
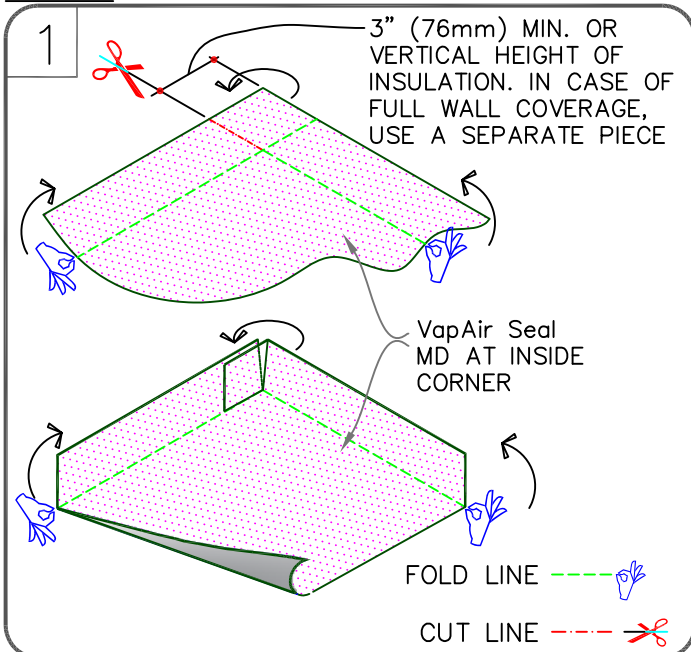


SEE MD-0 (PAGE 1 & 2) FOR ADDITIONAL INFORMATION.

VapAir Seal MD

<p>1</p>	<p>INSIDE CORNER WITH VapAir Seal MD PIECE</p> <p>A&VB (AIR & VAPOR BARRIER) AS REQUIRED BY DESIGNER</p>	<p>DETAIL NO.</p> <p>MD-15.1A</p> <p>ADHERED A&VB</p>
----------	--	---

AIR & VAPOR CONTROL LAYERS



SEE MD-0 (PAGE 1 & 2) FOR ADDITIONAL INFORMATION.

VapAir Seal MD

	→ VapAir Seal MD
	→ ROOF MEMBRANE
	→ CAV-GRIP, CCW-702 OR CCW-702LV
	→ SEE NOTE


INSIDE CORNER WITH PRESSURE-SENSITIVE ELASTOFROM EPDM

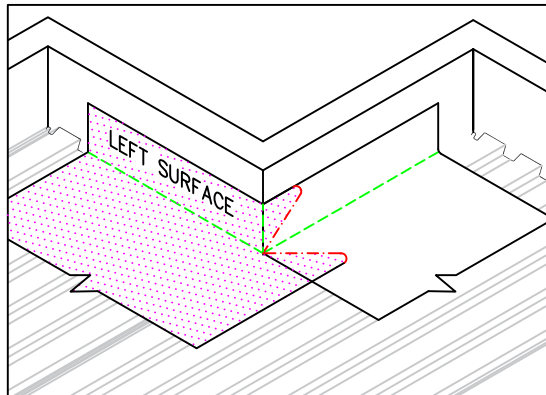
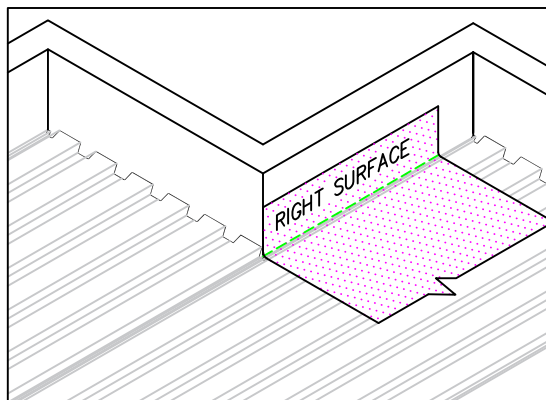
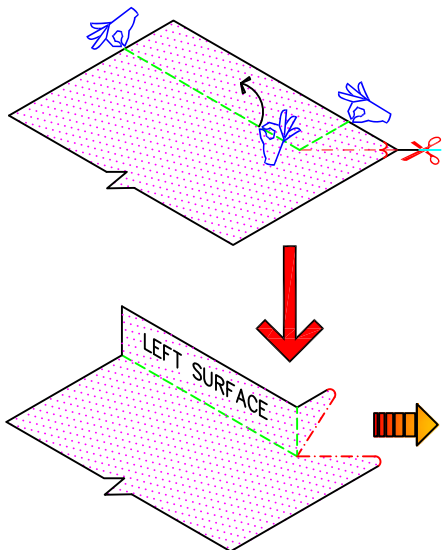
A&VB (AIR & VAPOR BARRIER) AS REQUIRED BY DESIGNER

DETAIL NO.	MD-15.1B
ADHERED A&VB	

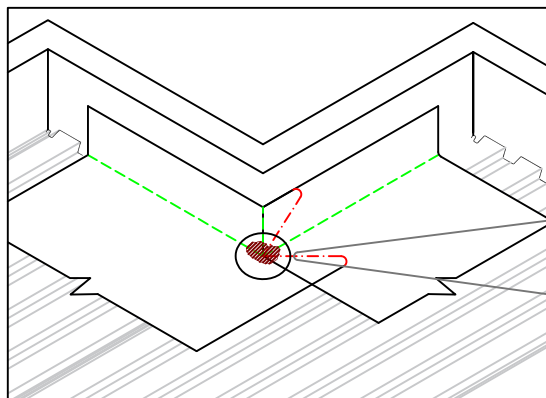
 VapAir Seal MD

FOLD LINE 

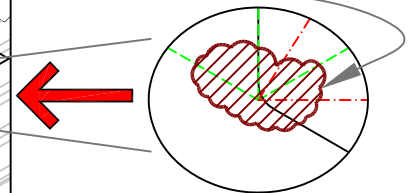
CUT LINE 



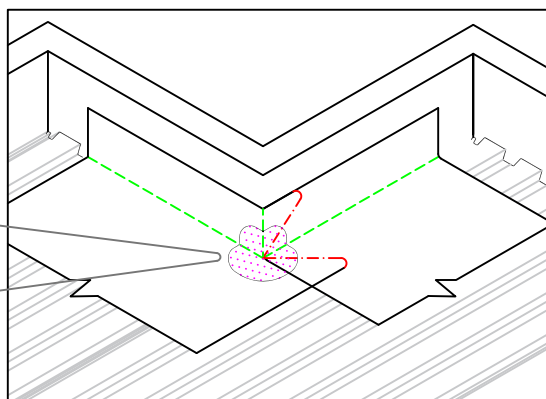
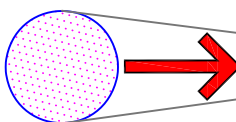
USE ROLLER PRESSURE TO PROPERLY SEAL ALL SURFACES



APPLY CARLISLE UNIVERSAL SINGLE PLY SEALANT'S BEAD 3/8" (9.5mm) DIAMETER, 1" (25mm) LONG FROM THE CORNER TO EACH DIRECTION OF ANGLE CHANGE







7-3/4"(197mm) DIAMETER TARGET PIECE CENTERED AT CORNER. ENSURE THE PIN-HOLE AT THE CENTER OF CORNER IS PROPERLY SEALED WITH THE THUMB PRESSURE



USE ROLLER PRESSURE TO PROPERLY SEAL EDGES. USE THUMB PRESSURE AT 90° CORNERS TO PROPERLY ADHERE TO SUBSTRATE MEMBRANE



SEE [MD-0 \(PAGE 1 & 2\)](#) FOR ADDITIONAL INFORMATION.

	→ VapAir Seal MD
	→ ROOF MEMBRANE
	→ CAV-GRIP, CCW-702 OR CCW-702LV
	→ SEE NOTE

1

OUTSIDE CORNER WITH VapAir Seal MD (OPTION A)

A&VB (AIR & VAPOR BARRIER) AS REQUIRED BY DESIGNER

VapAir Seal MD

DETAIL NO.

MD-15.2A

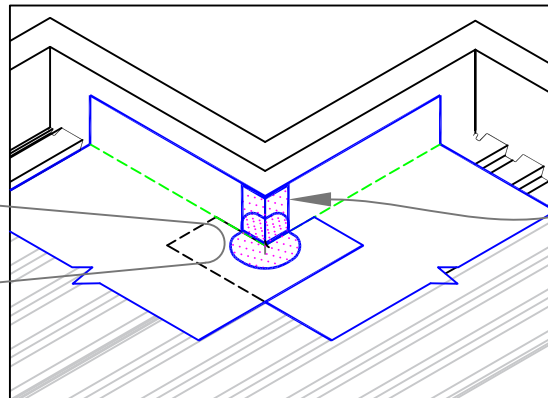
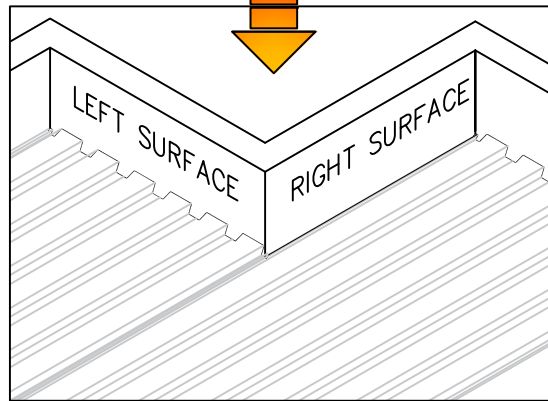
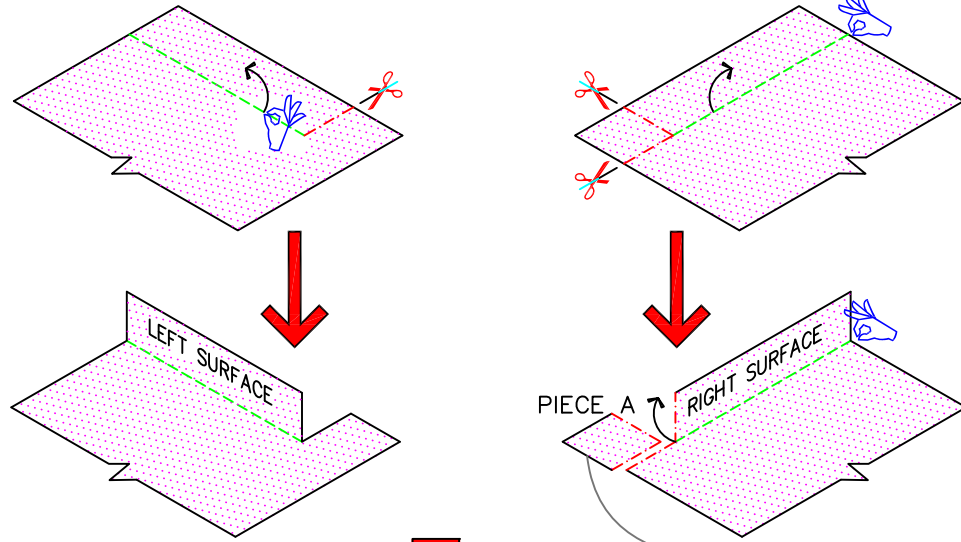
ADHERED A&VB

AIR & VAPOR CONTROL LAYERS

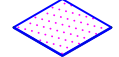
VapAir Seal MD

FOLD LINE

CUT LINE

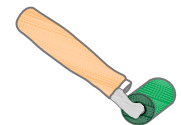


PIECE A



FOLD AT CENTER

USE ROLLER PRESSURE TO PROPERLY SEAL ALL SURFACES



LAST PIECE:
7-3/4" (197mm)
DIAMETER TARGET PIECE
CENTERED AT CORNER.
ENSURE THE PIN-HOLE AT
THE CENTER OF CORNER IS
PROPERLY SEALED WITH THE
THUMB PRESSURE

SEE MD-0 (PAGE 1 & 2) FOR
ADDITIONAL INFORMATION.

VapAir Seal MD

	→ VapAir Seal MD
	→ ROOF MEMBRANE
	→ CAV-GRIP, CCW-702
	→ OR CCW-702LV
	→ SEE NOTE

OUTSIDE CORNER WITH
VapAir Seal MD (OPTION B)

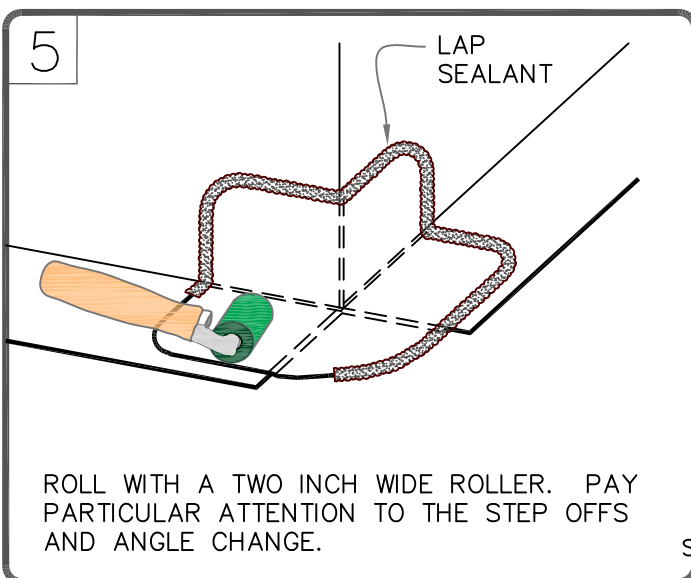
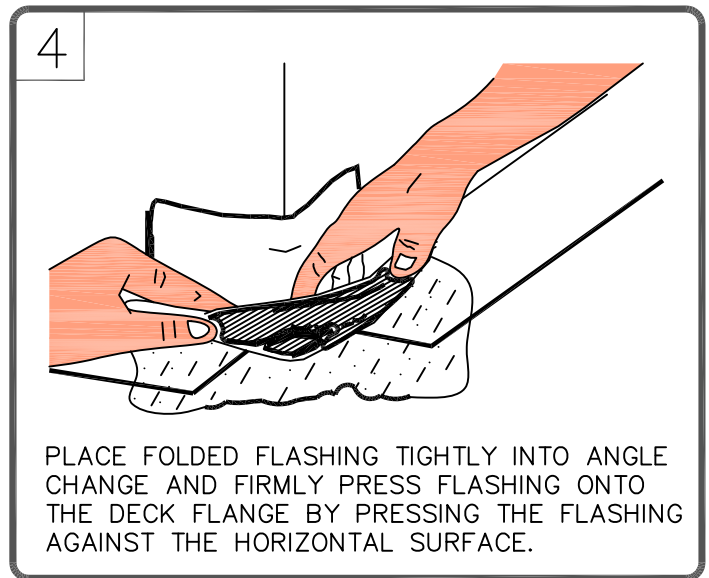
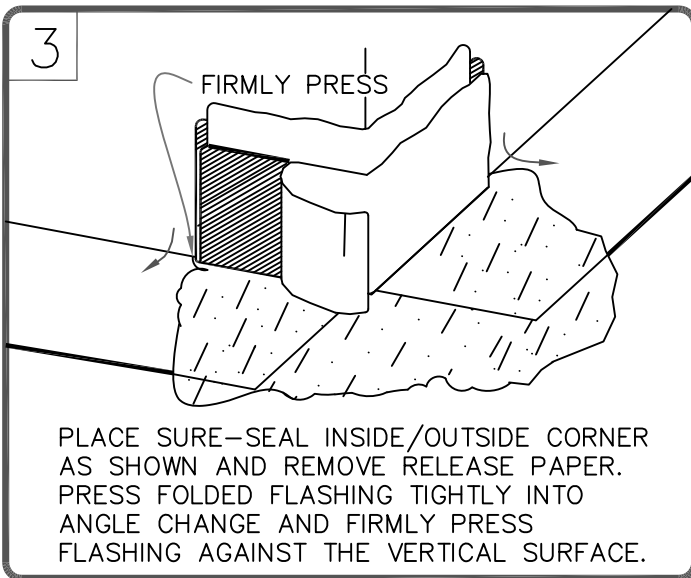
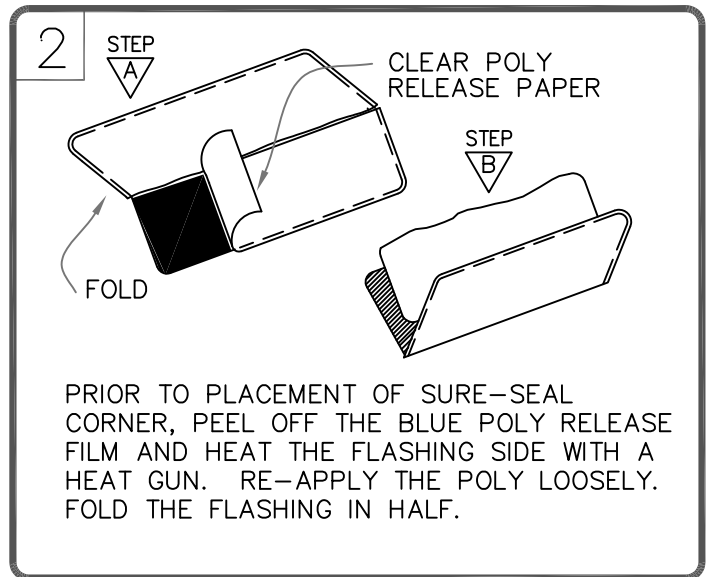
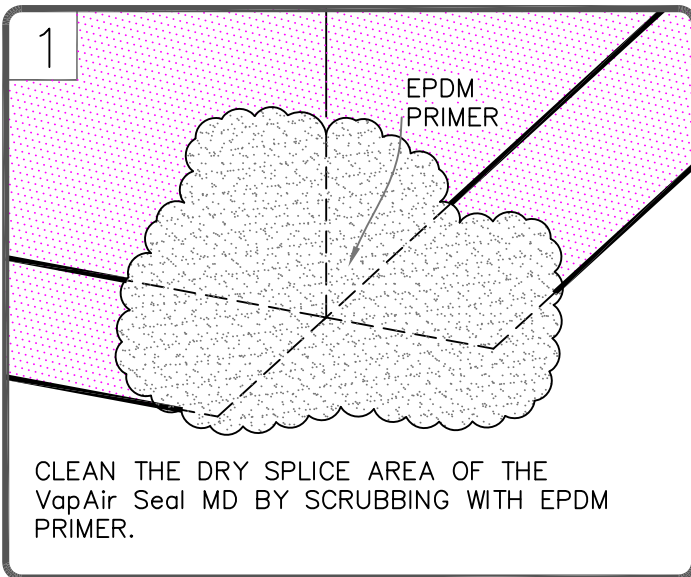
A&VB (AIR & VAPOR BARRIER) AS REQUIRED BY DESIGNER

$$= \frac{\sum R_x (T_i)}{\sum R}$$

DETAIL NO.

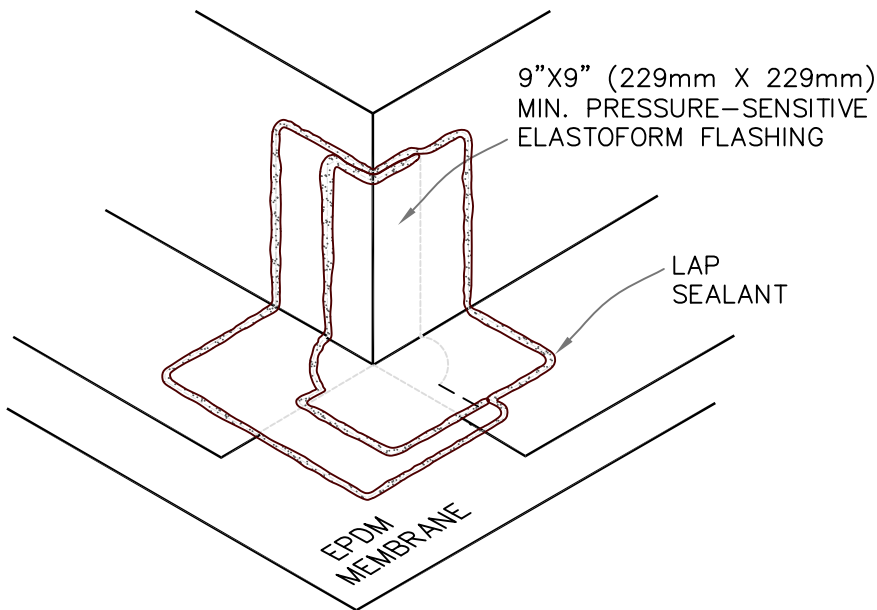
MD-15.2B

ADHERED A&VB

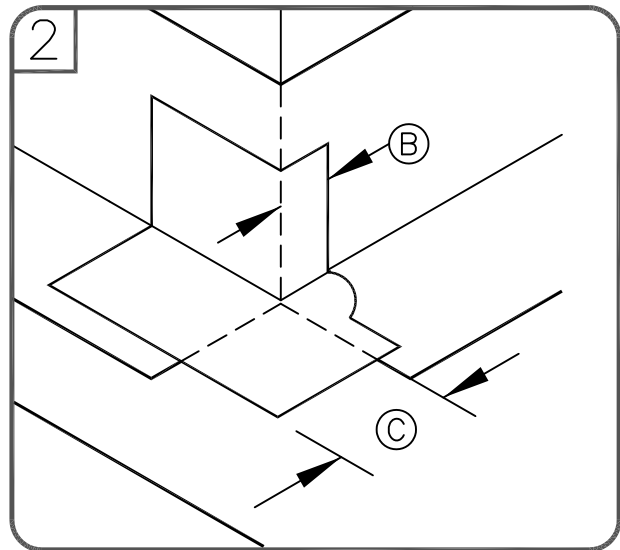
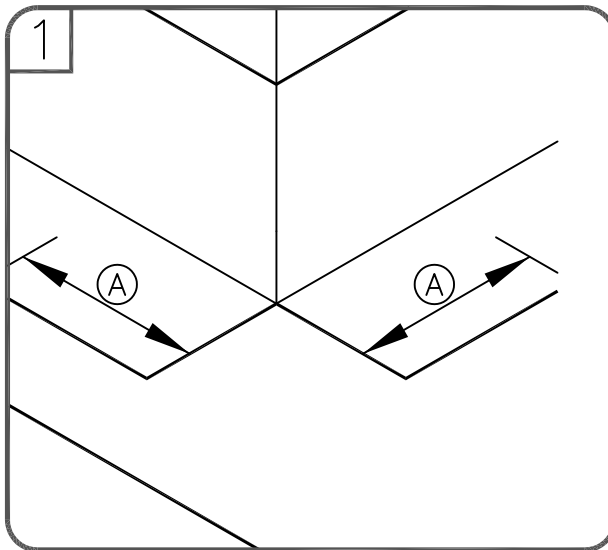


SEE [MD-0 \(PAGE 1 & 2\)](#) FOR ADDITIONAL INFORMATION.

<p>→ VapAir Seal MD</p> <p>→ ROOF MEMBRANE</p> <p>→ CAV-GRIP, CCW-702 OR CCW-702LV</p> <p>→ SEE NOTE</p>	<p>OUTSIDE CORNER WITH PRE-CUT PRESSURE-SENSITIVE ELASTOFORM EPDM</p> <p>A&VB (AIR & VAPOR BARRIER) AS REQUIRED BY DESIGNER</p>	<p>VapAir Seal MD</p> <p>DETAIL NO.</p> <p>MD-15.2C</p> <p>ADHERED A&VB</p>
--	---	---



DIMENSIONS		mm	
(A)	6"	152	TO
	9"	229	
(B)	2"	51	MIN.
(C)	3"	76	MAX.



NOTES:

1. APPLY EPDM PRIMER TO THE VapAir Seal MD SURFACES PRIOR TO INSTALLING PRESSURE-SENSITIVE FLASHING.
2. PRESSURE-SENSITIVE ELASTOFORM FLASHING TO OVERLAP DECK SURFACE 3" (76mm) MINIMUM AND EXTEND 2" (51mm) MINIMUM AROUND CORNERS.
3. IN COLDER TEMPERATURES, A HEAT GUN MUST BE USED WHEN FORMING PRESSURE-SENSITIVE ELASTOFORM FLASHING.

SEE [MD-0 \(PAGE 1 & 2\)](#) FOR ADDITIONAL INFORMATION.

	→ VapAir Seal MD
	→ ROOF MEMBRANE
	→ CAV-GRIP, CCW-702 OR CCW-702LV
1	→ SEE NOTE

OUTSIDE CORNER
WITH PS EPDM ELASTOFORM
FLASHING — OPTION 1

A&VB (AIR & VAPOR BARRIER) AS REQUIRED BY DESIGNER

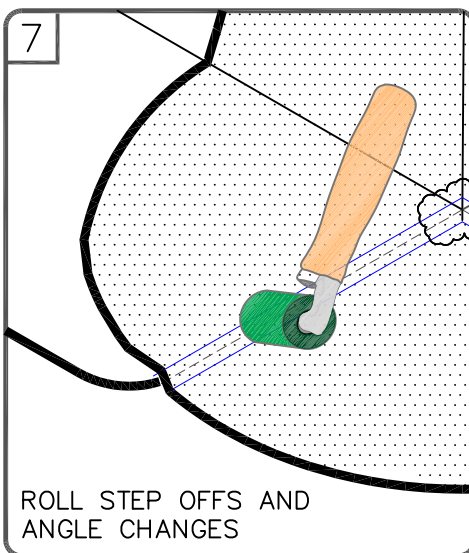
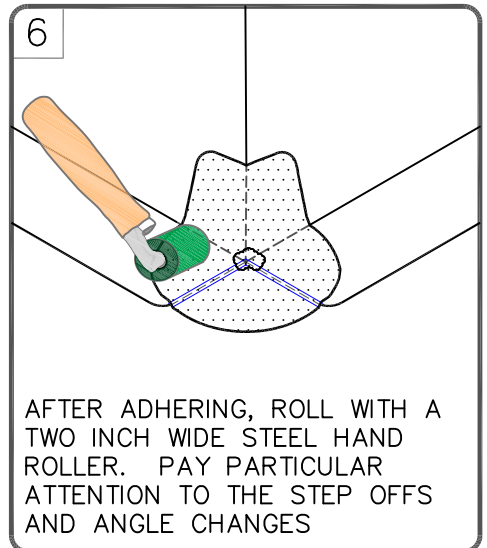
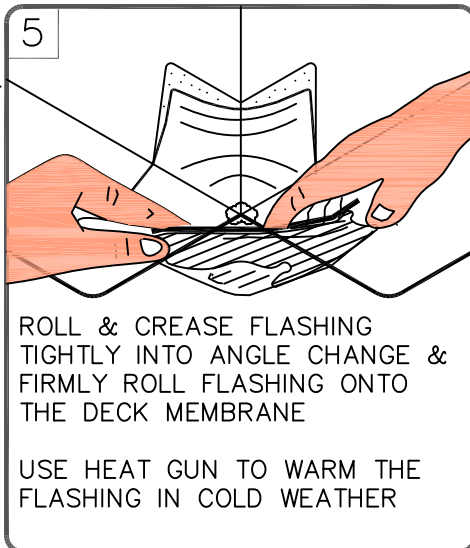
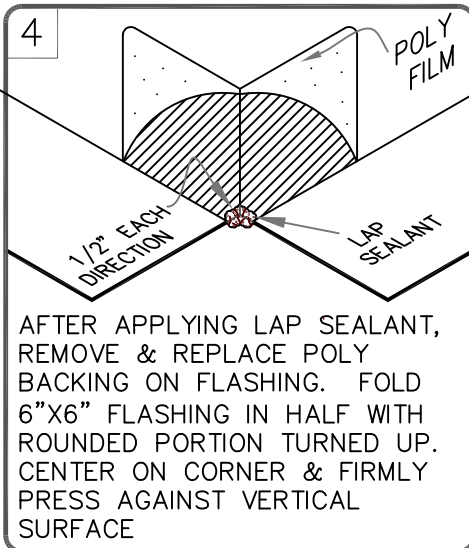
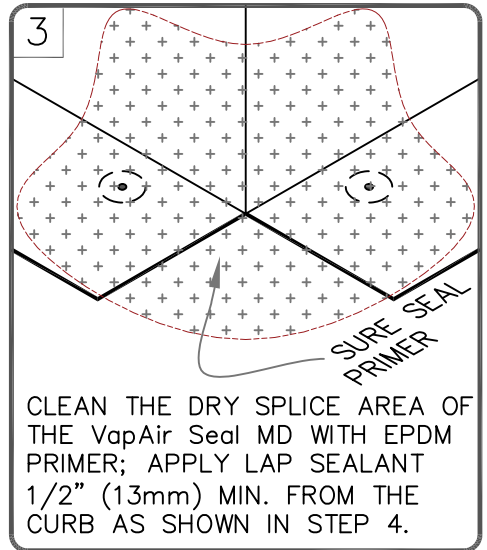
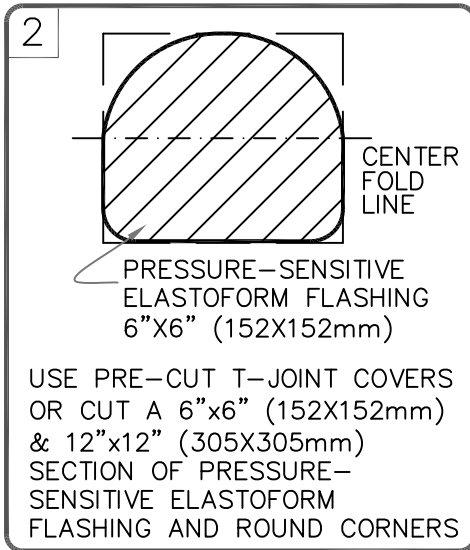
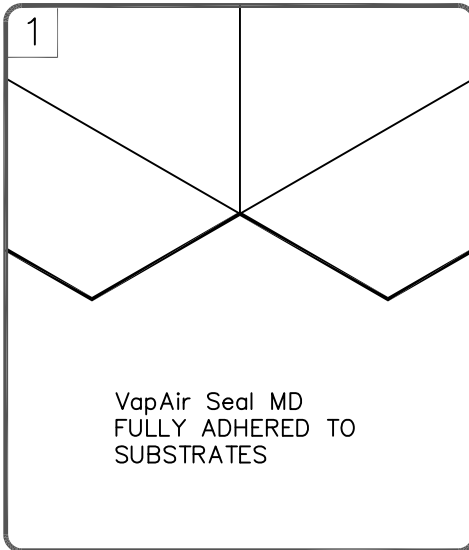
VapAir Seal MD

DETAIL NO.

MD-15.2D

ADHERED A&VB

AIR & VAPOR CONTROL LAYERS



SEE [MD-0 \(PAGE 1 & 2\)](#) FOR ADDITIONAL INFORMATION.

	→ VapAir Seal MD
	→ ROOF MEMBRANE
	→ CAV-GRIP, CCW-702 OR CCW-702LV
	→ SEE NOTE

OUTSIDE CORNER WITH PRESSURE-SENSITIVE EPDM ELASTOFORM
A&VB (AIR & VAPOR BARRIER) AS REQUIRED BY DESIGNER

VapAir Seal MD	DETAIL NO.
$= \frac{\sum R_x}{\sum R} (T_i)$	MD-15.2E
	ADHERED A&VB